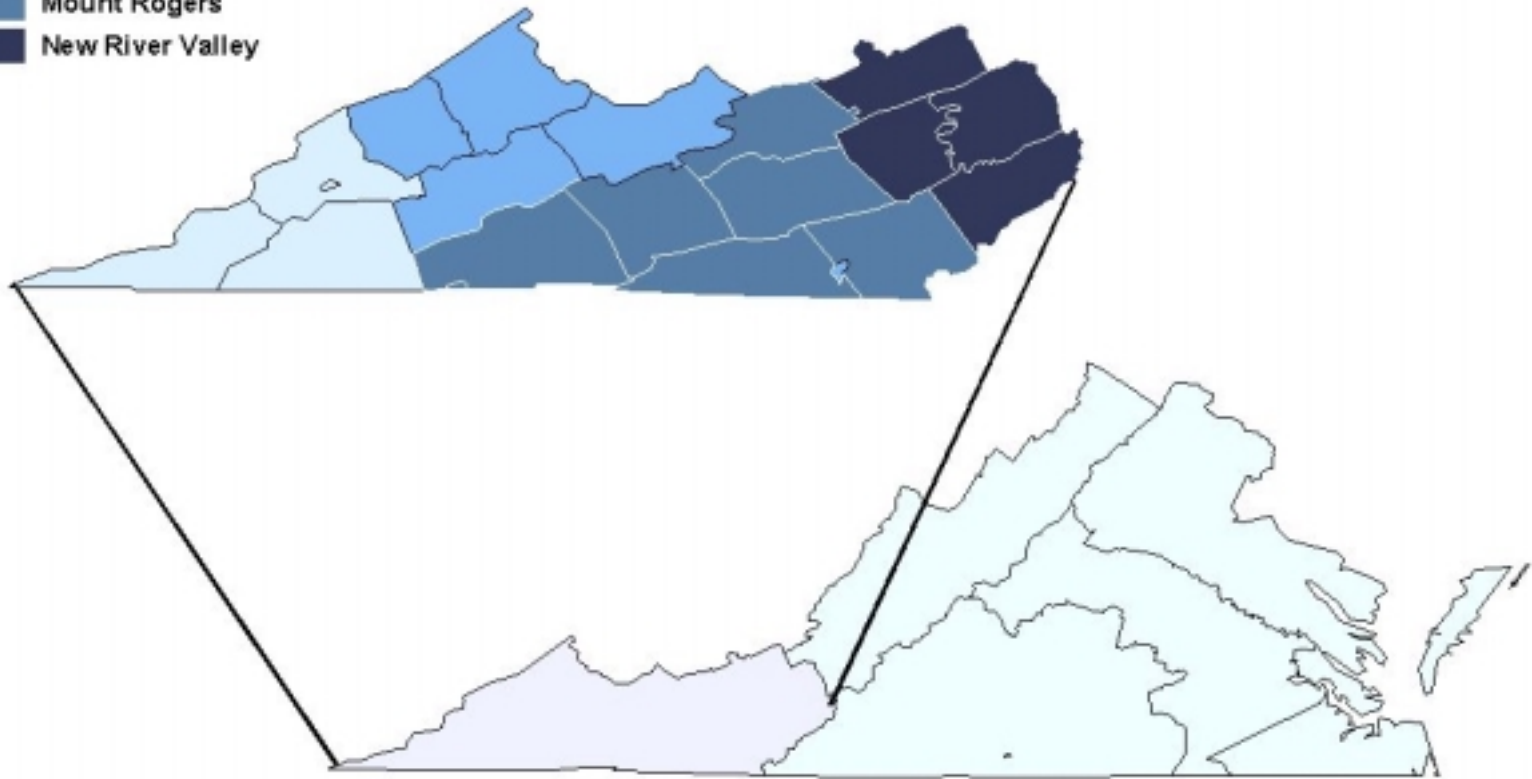


Planning District Commissions: LENOWISCO Cumberland Plateau New River Mount Rogers

Planning District Commissions

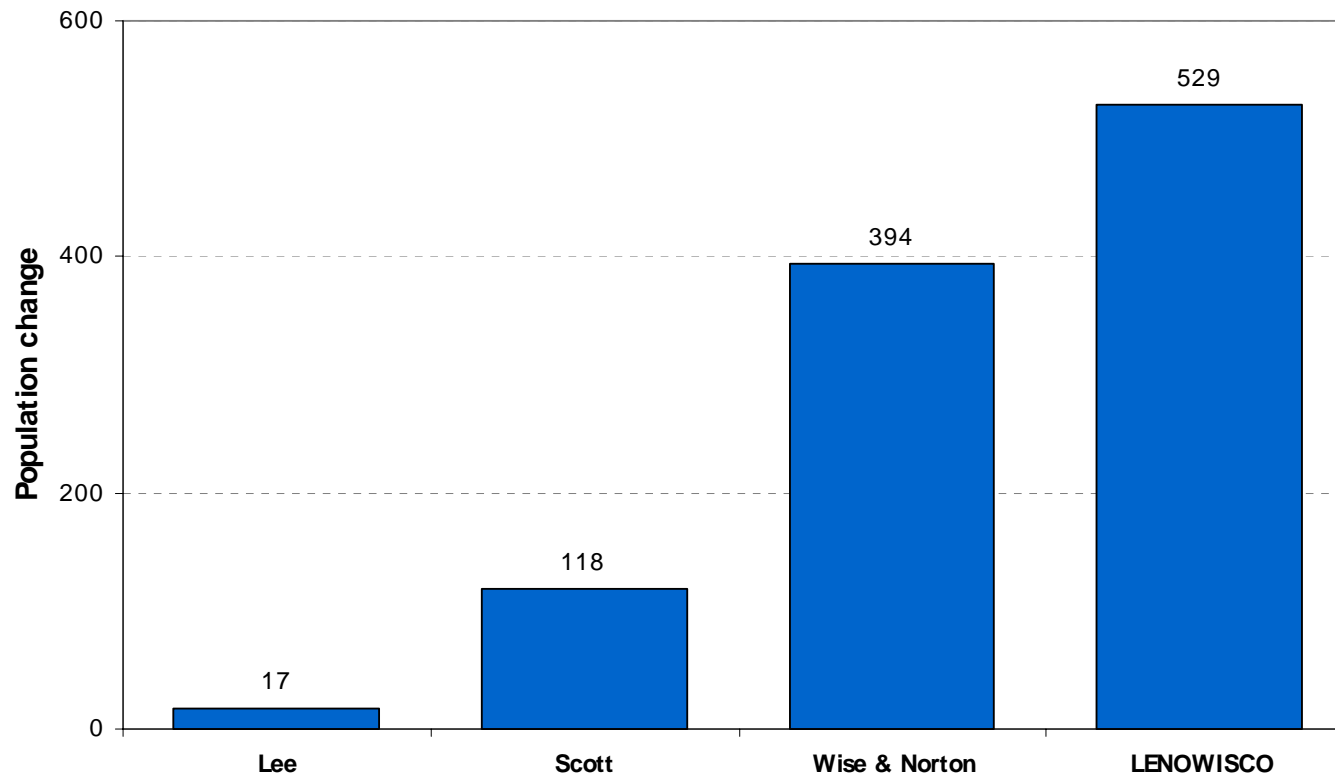
- LENOWISCO
- Cumberland Plateau
- Mount Rogers
- New River Valley



**LENOWISCO
PLANNING DISTRICT
COMMISSION**

POPULATION

Population change LENOWISCO PDC, 1969-1998



- ◆ Very little population growth in the 1990s and almost all of that in Wise and Norton

POPULATION

- ◆ Total population of about 90,000
- ◆ Prime factor is net out-migration
- ◆ Median age about three years older than state median

NO MAJOR URBAN CENTER

- ◆ Largest town: Big Stone Gap, population under 5,000
- ◆ Most of the area part of the Tri-cities (Bristol/Johnson City/Kingsport) trade area

EMPLOYMENT

- ◆ Employment growth in 1990s about 0.3 % annually
- ◆ Throughout most of the 1990s, unemployment rates above 10 % region wide
- ◆ About 1 of every 5 jobs in relatively low paying service industries
- ◆ Mining sector still important in Wise County, but mining jobs declining
- ◆ Prisons growing source of jobs in the region
- ◆ Almost 1 of every 10 jobs in the region on farm and mostly tied to burley tobacco

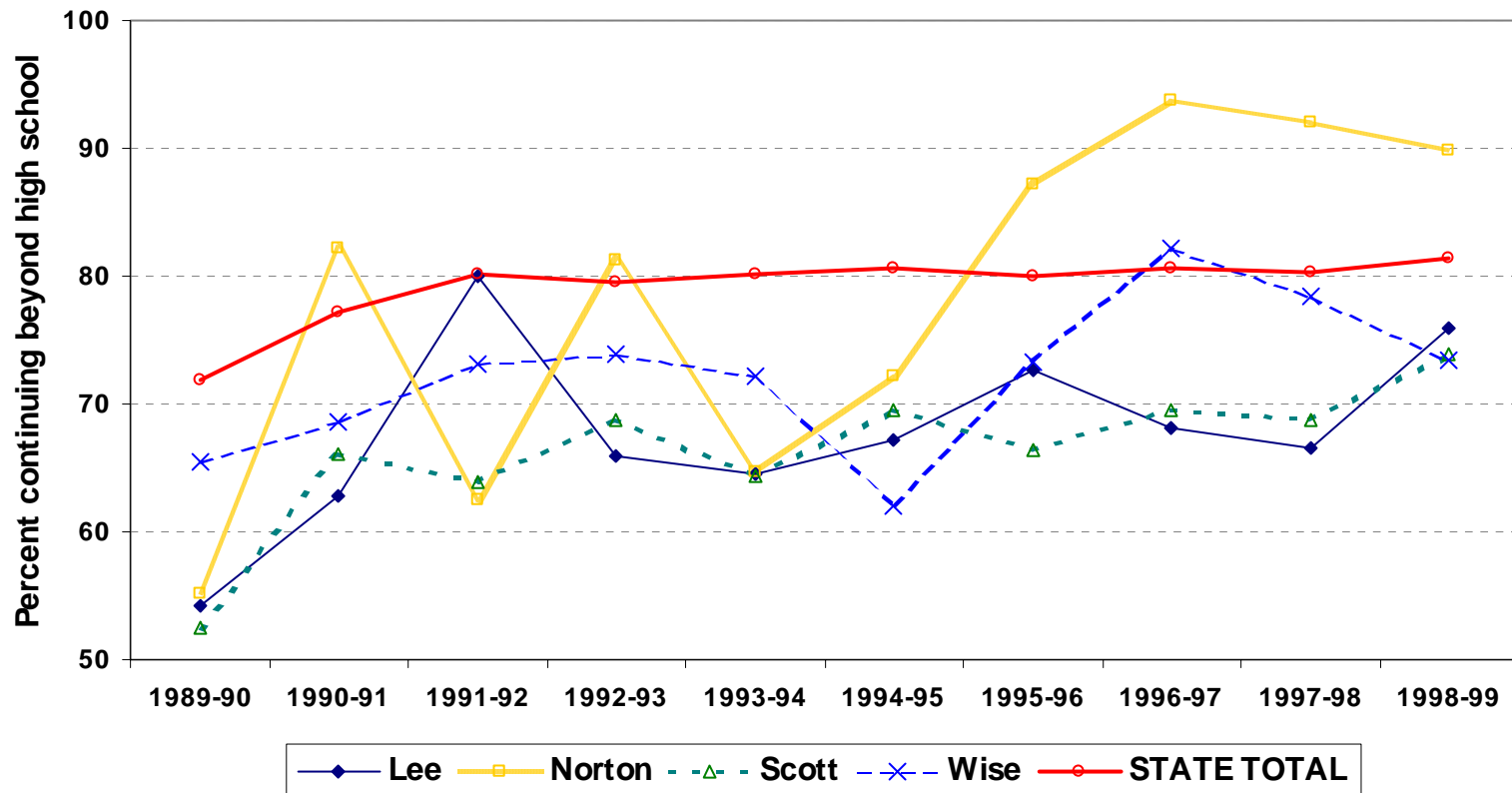
COMMUTING

- ◆ Major commuter magnates: Sullivan County, Tennessee and Norton
- ◆ 38 % of workers in Scott County commute to jobs in Tennessee
- ◆ Small number of Lee County residents commute through Cumberland Gap to Kentucky

EDUCATION

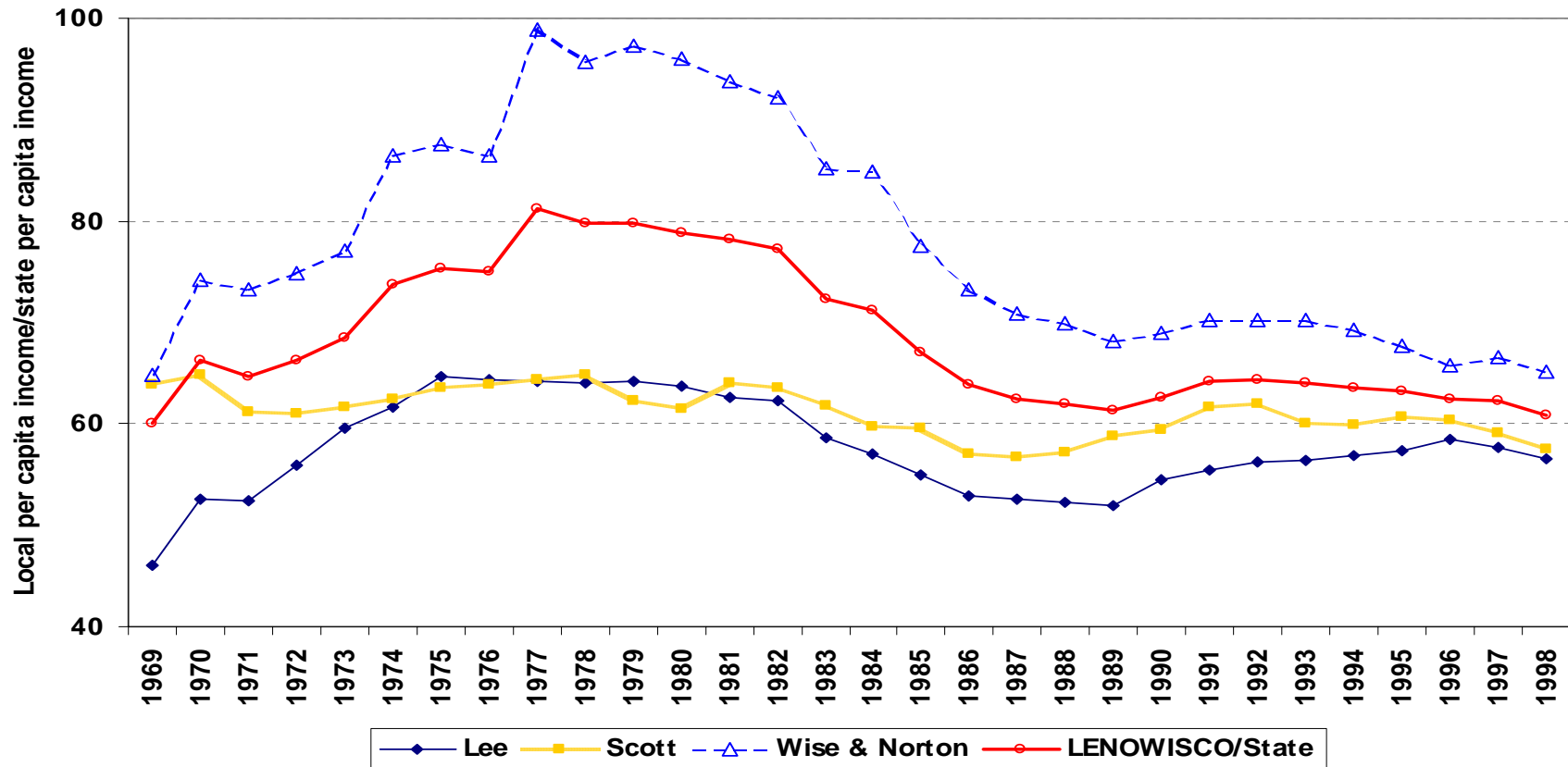
- ◆ Bright spot: the region exceeds the state average in the percentage of 9th graders who finish high school
- ◆ In 1990, no high school diploma for about 1 of every 4 people 25 years old or older in this region
- ◆ Except for Norton, high school test scores well below the state average

EDUCATION



- ◆ The percentage of high school graduates going to post-secondary education is below the state average except in Norton

INCOME

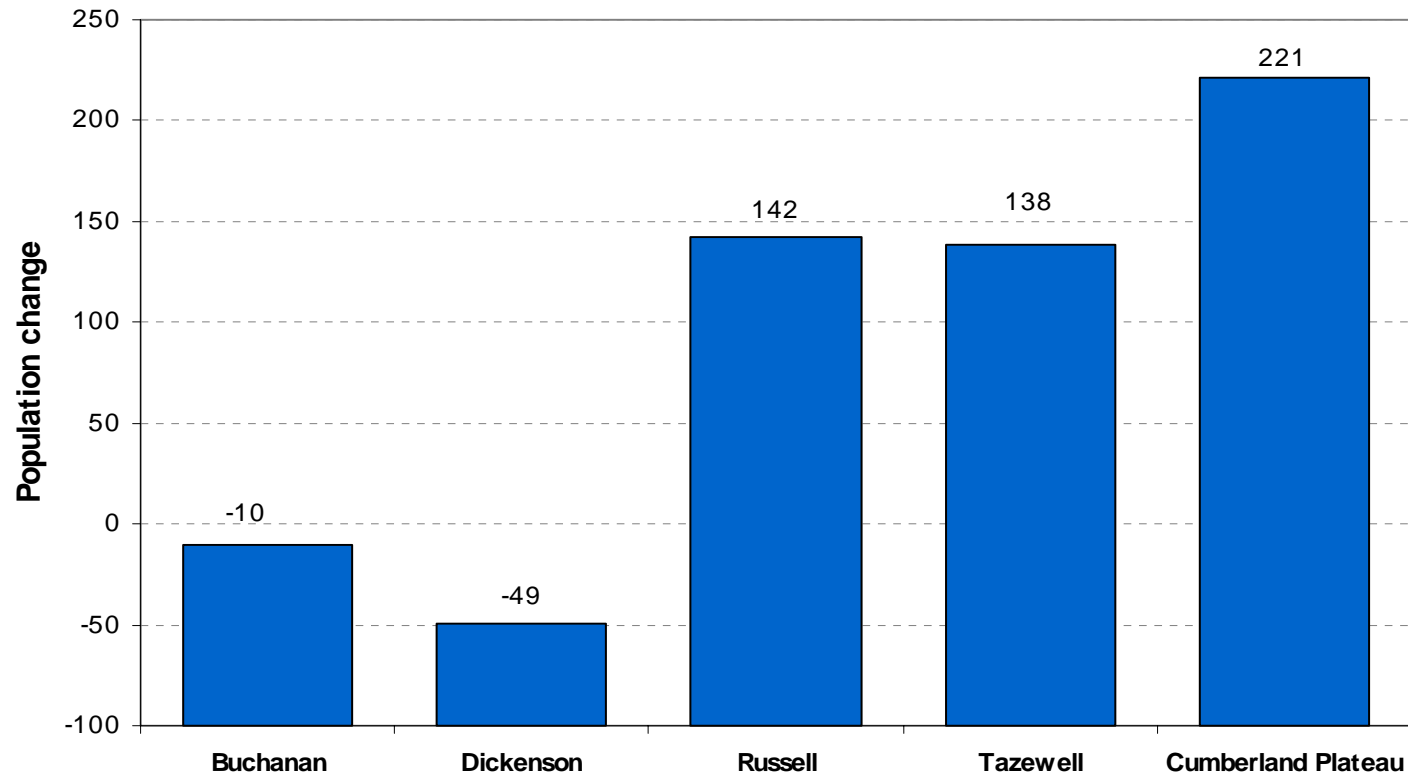


- ◆ Per capita income about 60 % of the state average
- ◆ Wise County and Norton benefited from coal boom in late 1970s but incomes declined in late 1980s.
- ◆ Lee County: Only one with any significant income improvement in the 1990s

CUMBERLAND PLATEAU
PLANNING DISTRICT
COMMISSION

POPULATION

Population change Cumberland Plateau PDC, 1969-1998



- ◆ Very little overall change in population in 1990s
- ◆ Very modest population growth in the 1990s in Russell and Tazewell counties

POPULATION

- ◆ Total population of about 125,000
- ◆ Median age is about two years older than statewide median
- ◆ Only three towns with populations over 4,000: Bluefield, Richlands, and Tazewell

EMPLOYMENT

- ◆ Virtually no job growth in the 1990s
- ◆ Unemployment rates remained at double-digit levels throughout the 1990s
- ◆ Chief factor: declining employment in the mining sector
- ◆ Major job growth: correctional facilities
- ◆ Only significant farming: livestock operations in Russell and Tazewell counties

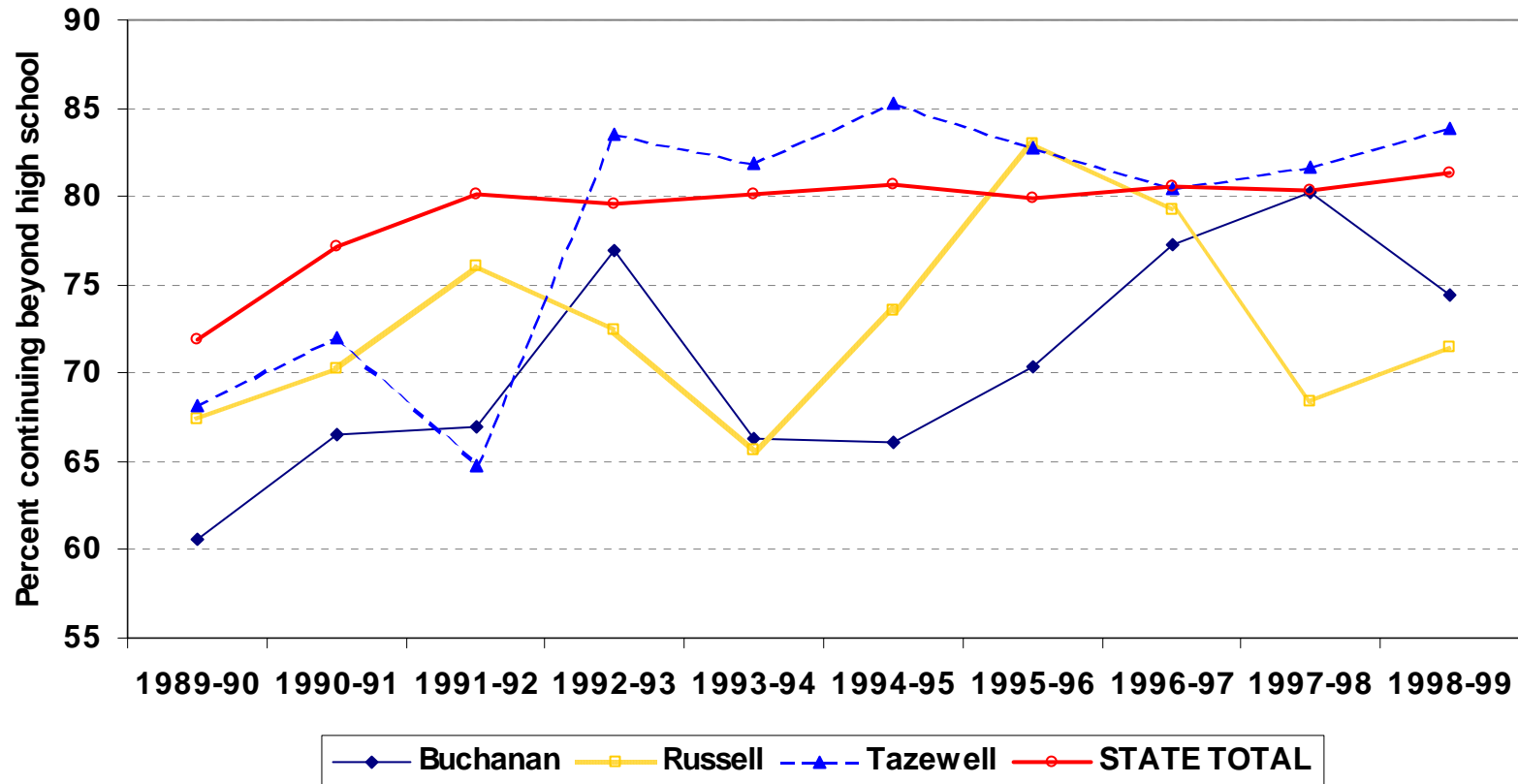
COMMUTING

- ◆ Chief commuter magnate in the district:
Buchanan County
- ◆ Residents commute from district to
Bluefield, West Virginia, and to Wise and
Washington counties

EDUCATION

- ◆ In 1990, only about half the population 25 years old or older in the district had high school diplomas
- ◆ Percent of 9th graders finishing high school is close to statewide average
- ◆ None of the school districts posted scores on high school tests above the state average

EDUCATION

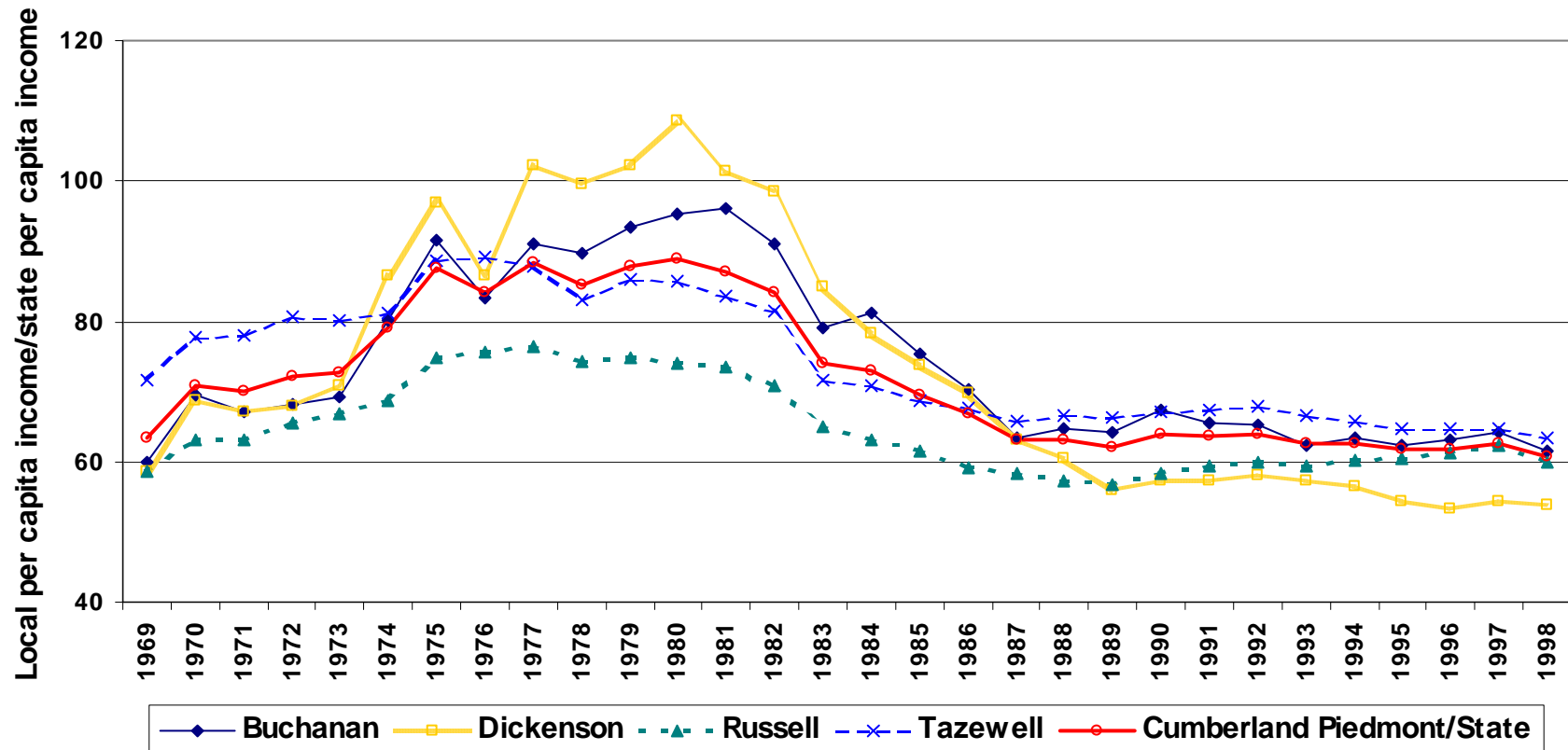


- ◆ Lower percent of high school graduates in Dickenson and Russell counties continue on to post-secondary education than the statewide average

INCOME

- ◆ Impact of the coal boom on late 1970s and early 1980s shows up in per capita income data
- ◆ Not a great deal of spread on per capita incomes across the four counties

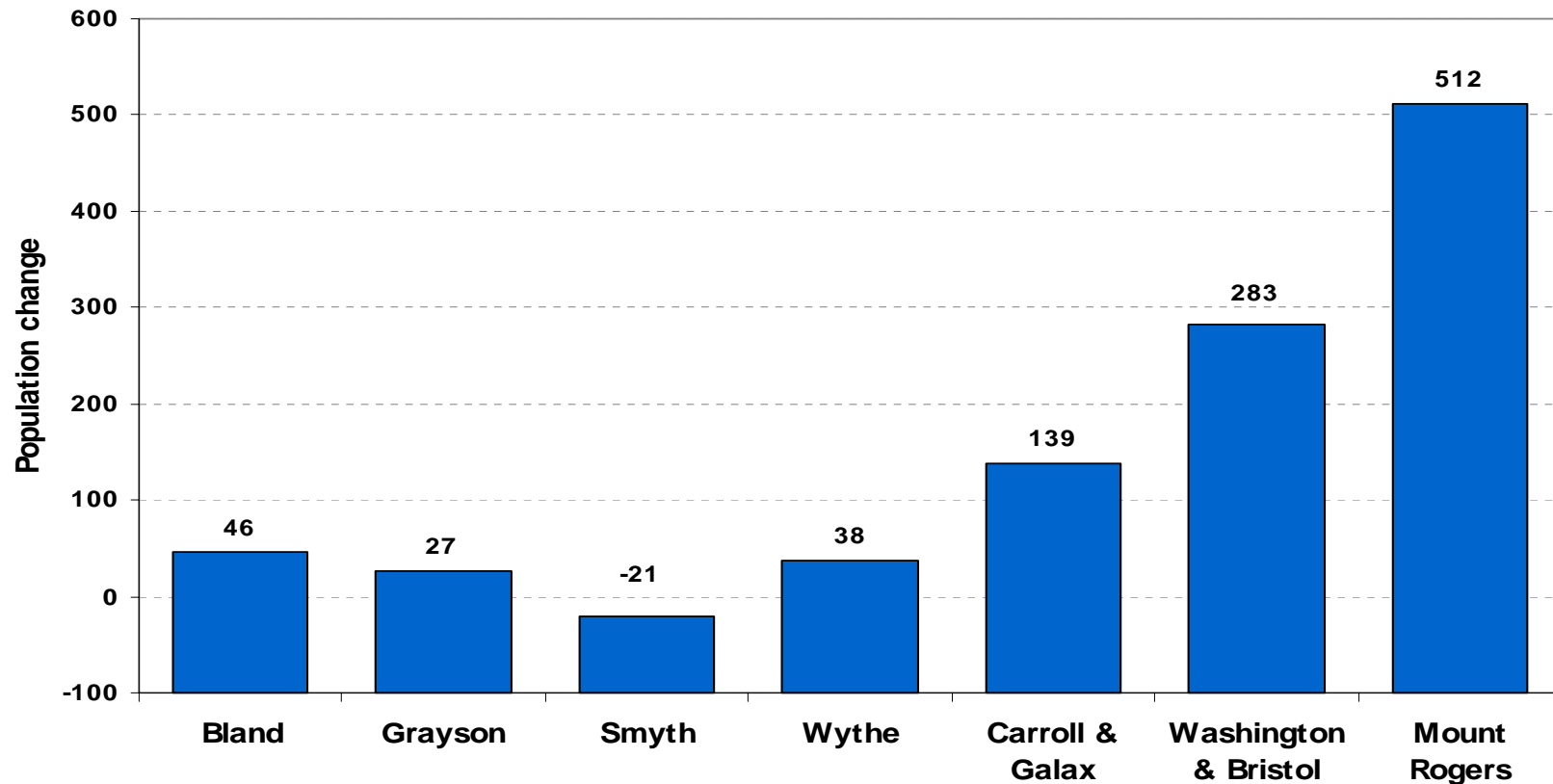
INCOME



- ◆ In 1998, the region stood at about 60 % of the state average in per capita income, close to the same relative level that it stood in 1969

**MOUNT ROGERS
PLANNING DISTRICT
COMMISSION**

POPULATION



- ◆ Slow overall population growth with more than half that growth in Washington County and Bristol
- ◆ Washington County and Bristol account for more than 1/3 of the total population of the region

POPULATION

- ◆ Total population of just under 190,000
- ◆ Median age of population about five years older than state

EMPLOYMENT

- ◆ Region ranks 8th among Virginia's PDCs in total employment
- ◆ Job growth has been a bit faster than state and national rates
- ◆ Manufacturing remains the major employer in the region: more than 1 out of every 4 jobs
- ◆ Average weekly wages a little over \$525
- ◆ Unemployment rate fallen, but remains above the state and national levels

RETAIL SALES

- ◆ About half the retail sales in the region are in Washington County and Bristol

AGRICULTURE

- ◆ Just under 7 % of the jobs in the region are on the farm
- ◆ About 40 % of farms in district operated by full-time farmers
- ◆ Washington County is Virginia's largest burley tobacco producing county and ranks third among Virginia counties in cattle

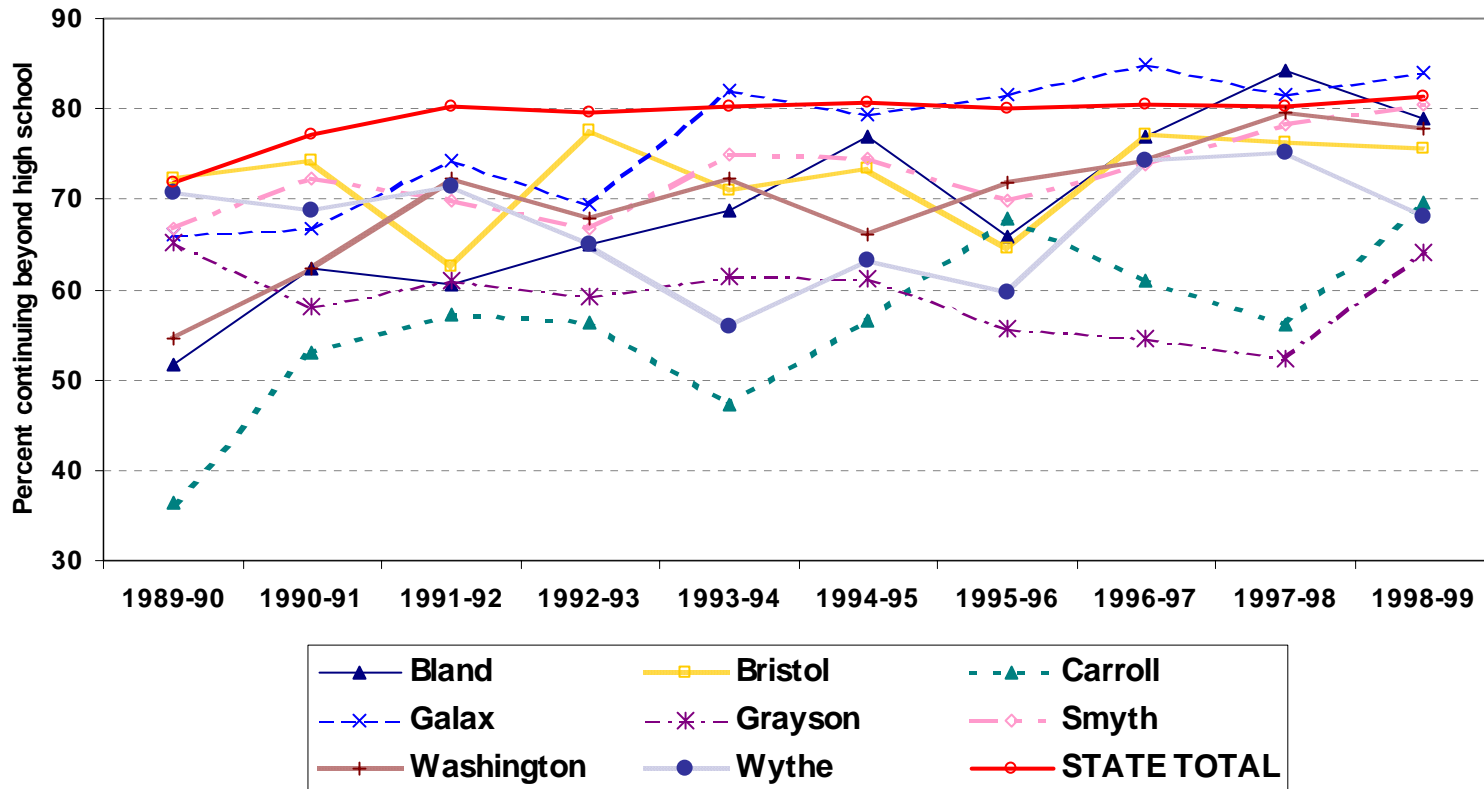
COMMUTING

- ◆ Significant out-commuting to Tennessee, North Carolina, and West Virginia
- ◆ Principal commuter magnates in the region are Bristol/Washington County, and Galax

EDUCATION

- ◆ Just over half the population 25 years old or older had high school diplomas in 1990
- ◆ Percent with college degrees runs well below the state average in all locations within the region
- ◆ Ranks third among the Planning Districts in number of 9th graders finishing high school
- ◆ Scores on standardized high school tests vary widely within the district, exceeding or approximating state average in some systems, and very far below state average in others

EDUCATION

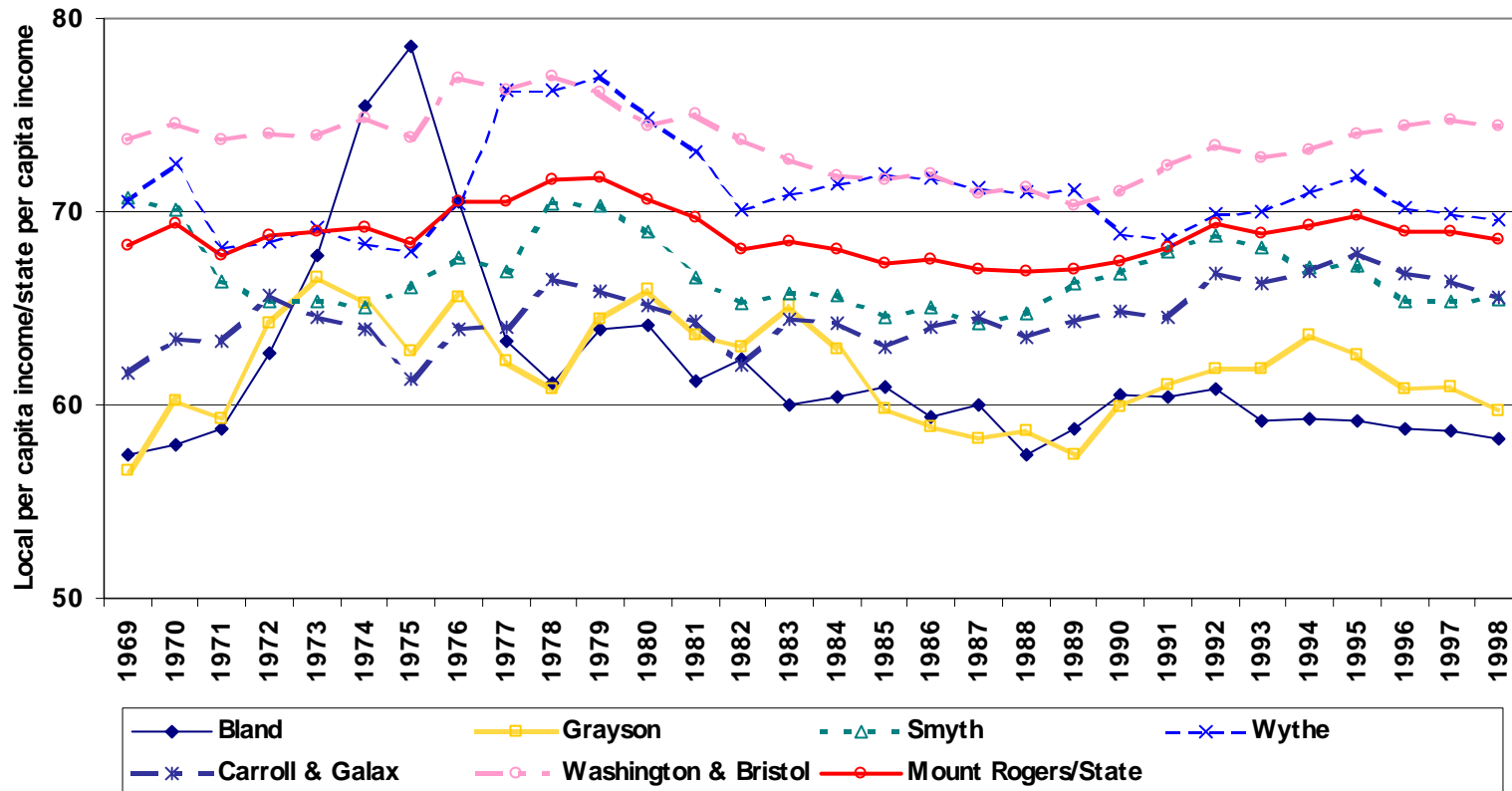


- ◆ Ranks near the bottom among Planning Districts in number of high school graduates moving on to post secondary education

INCOME

- ◆ Bland and Grayson well below the others in per capita incomes
- ◆ Washington County and Bristol beginning to diverge upward from the remainder of the district
- ◆ Remaining counties converging toward the district average

INCOME



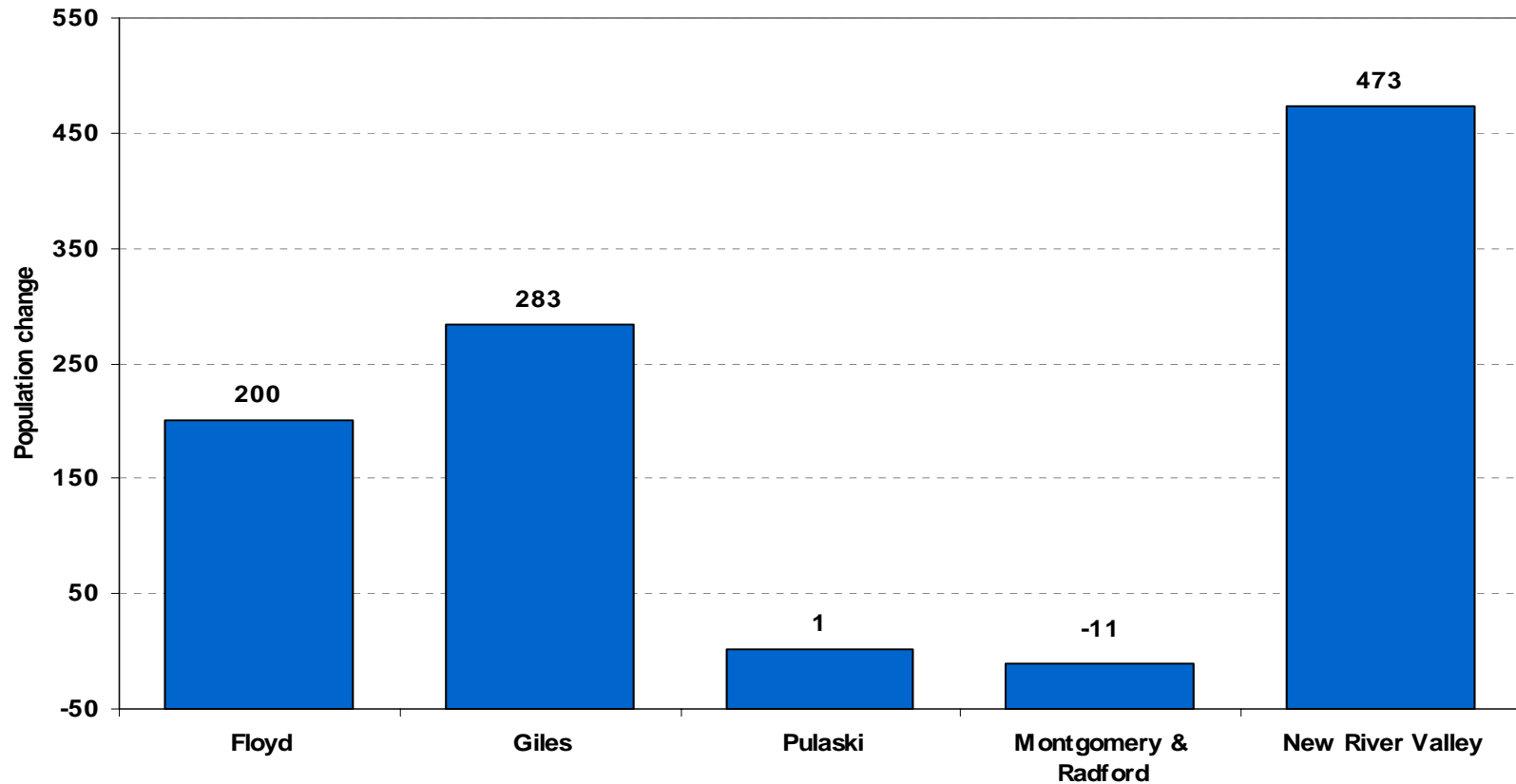
- ◆ Per capita incomes relative to the state average have remained close to 70% since 1969

**NEW RIVER VALLEY
PLANNING DISTRICT
COMMISSION**

POPULATION

- ◆ Total population of about 160,000
- ◆ Median age about two years younger than state median, mostly because of large college student population

POPULATION



- ◆ Almost 80 % of the population in city of Radford and Montgomery and Pulaski counties
- ◆ Very slow population growth in the 1990s

EMPLOYMENT

- ◆ Government is the largest employer in the region
- ◆ Manufacturing also a major employer
- ◆ Employment growth slow relative to state and nation
- ◆ Most employment growth in Radford and Montgomery County
- ◆ Unemployment rates higher than state and nation

RETAIL SALES

- ◆ 60 % of retail sales are in Radford and Montgomery County

AGRICULTURE

- ◆ On-farm jobs account for about 3% of employment, down from over 4% in 1985
- ◆ Floyd County accounts for more than 1/3 of the farm jobs

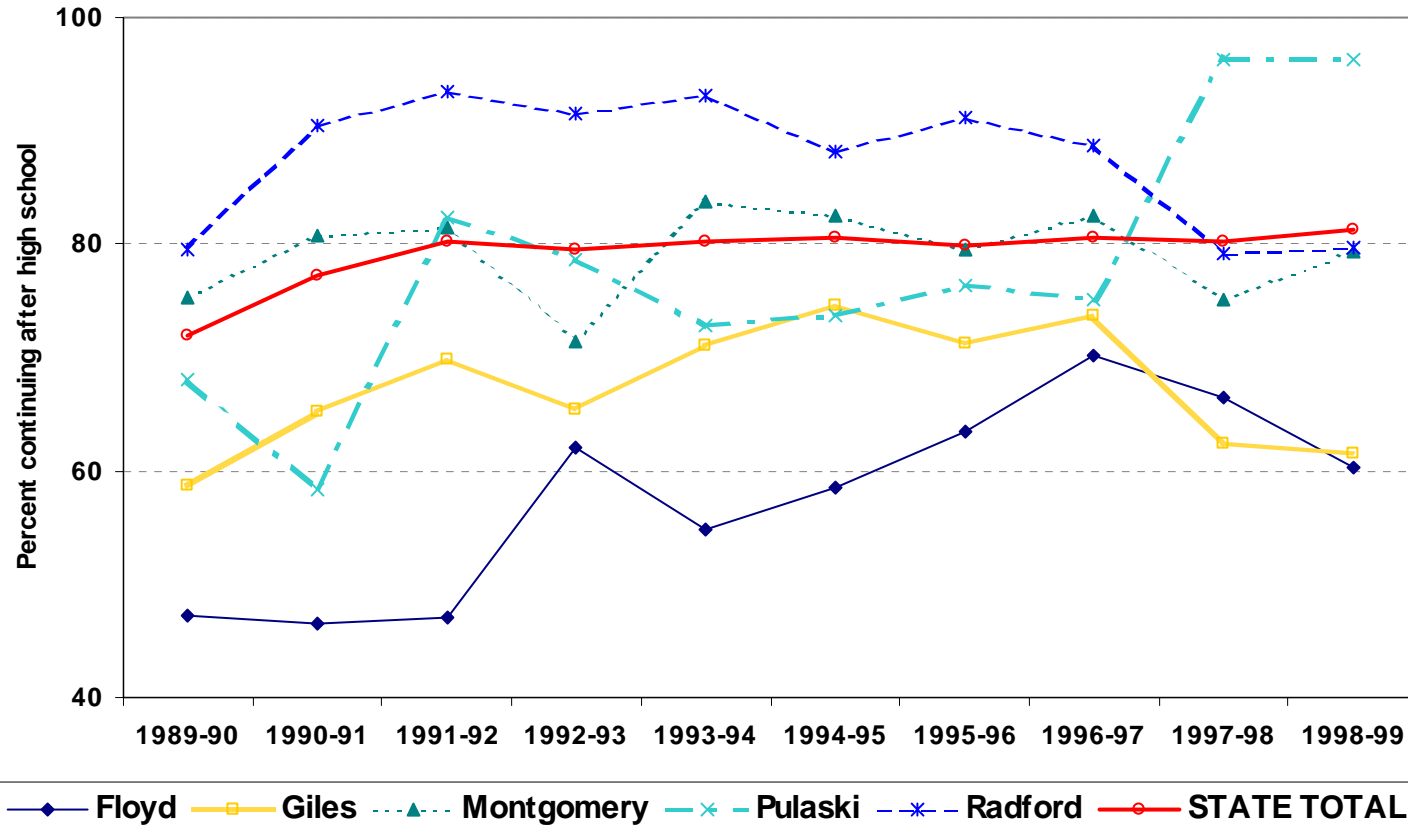
COMMUTING

- ◆ Montgomery County chief commuter magnate
- ◆ Significant out-commuting to Roanoke and Salem

EDUCATION

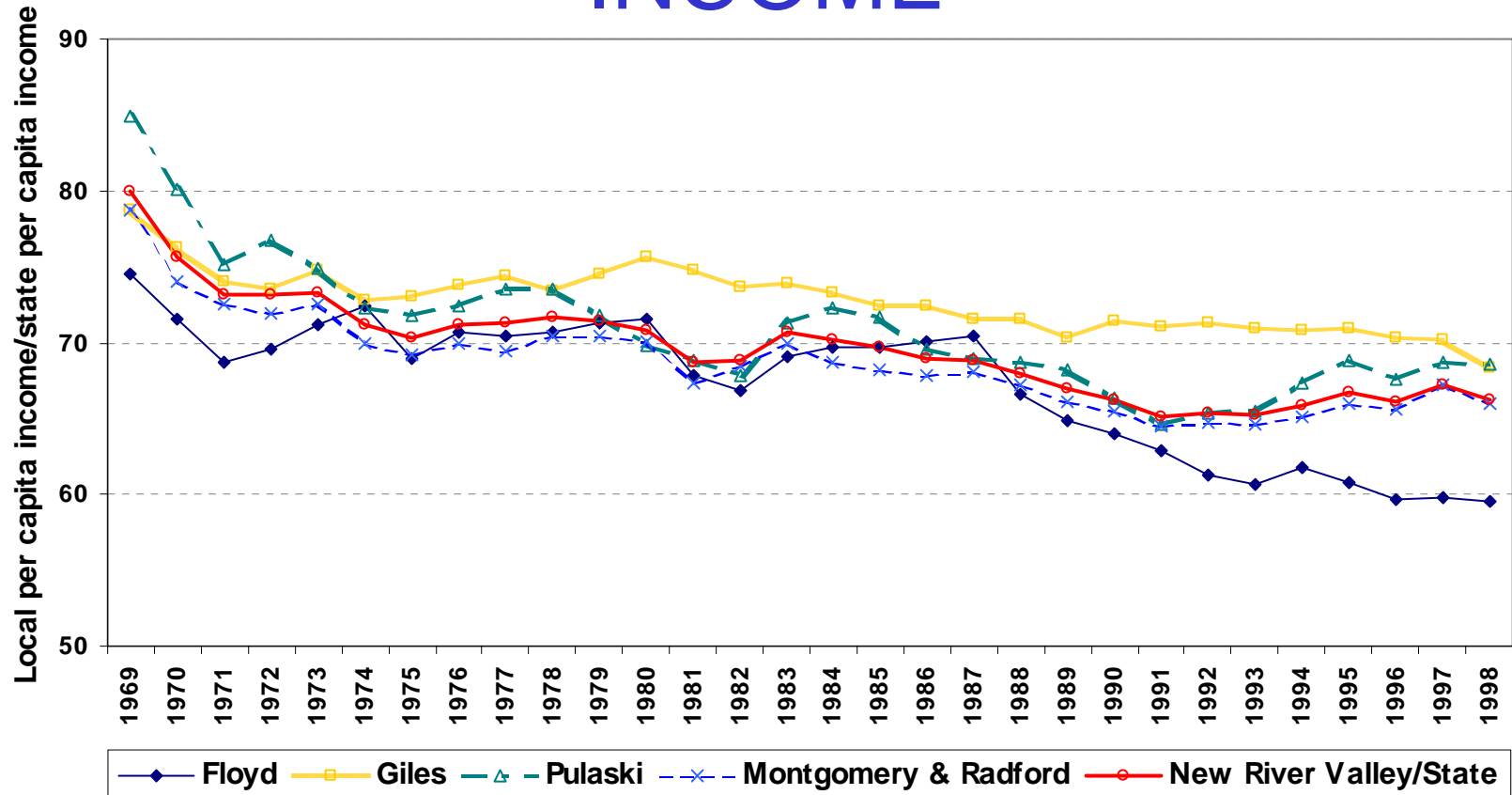
- ◆ Great diversity in educational attainment
- ◆ Higher percentage of the population 25 years old and older in 1990 were college graduates than state as a whole, but smaller percentage were high school graduates
- ◆ Reflects presence of two major universities
- ◆ High school test scores are a bit lower than state average except in Radford

EDUCATION



- ◆ Very high percentage of Radford High School graduates continue on to post-secondary education; one of the top 100 school districts in the United States

INCOME



- ◆ Per capita incomes generally declining relative to state average in entire region
- ◆ Only Floyd County trails significantly in per capita income