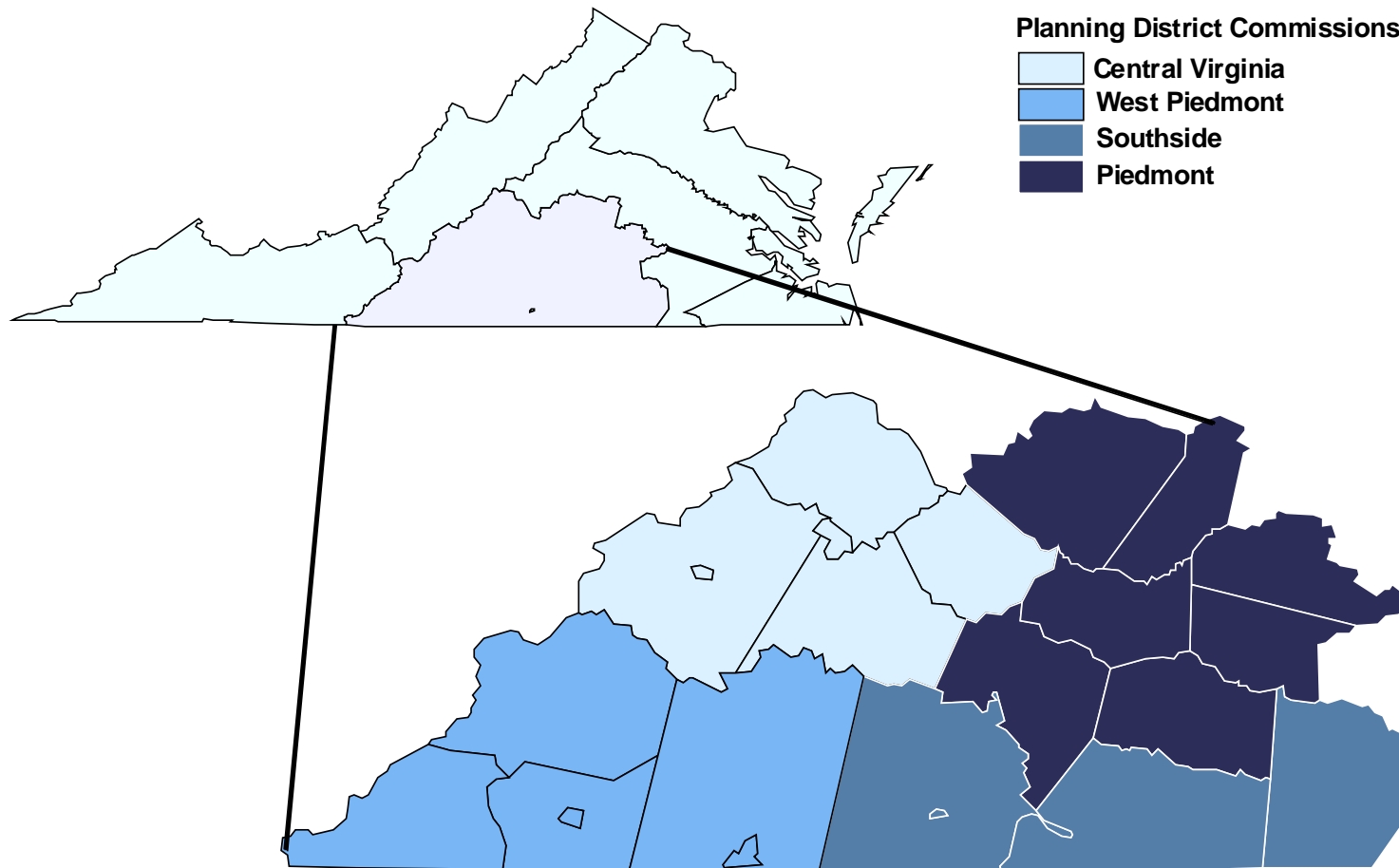
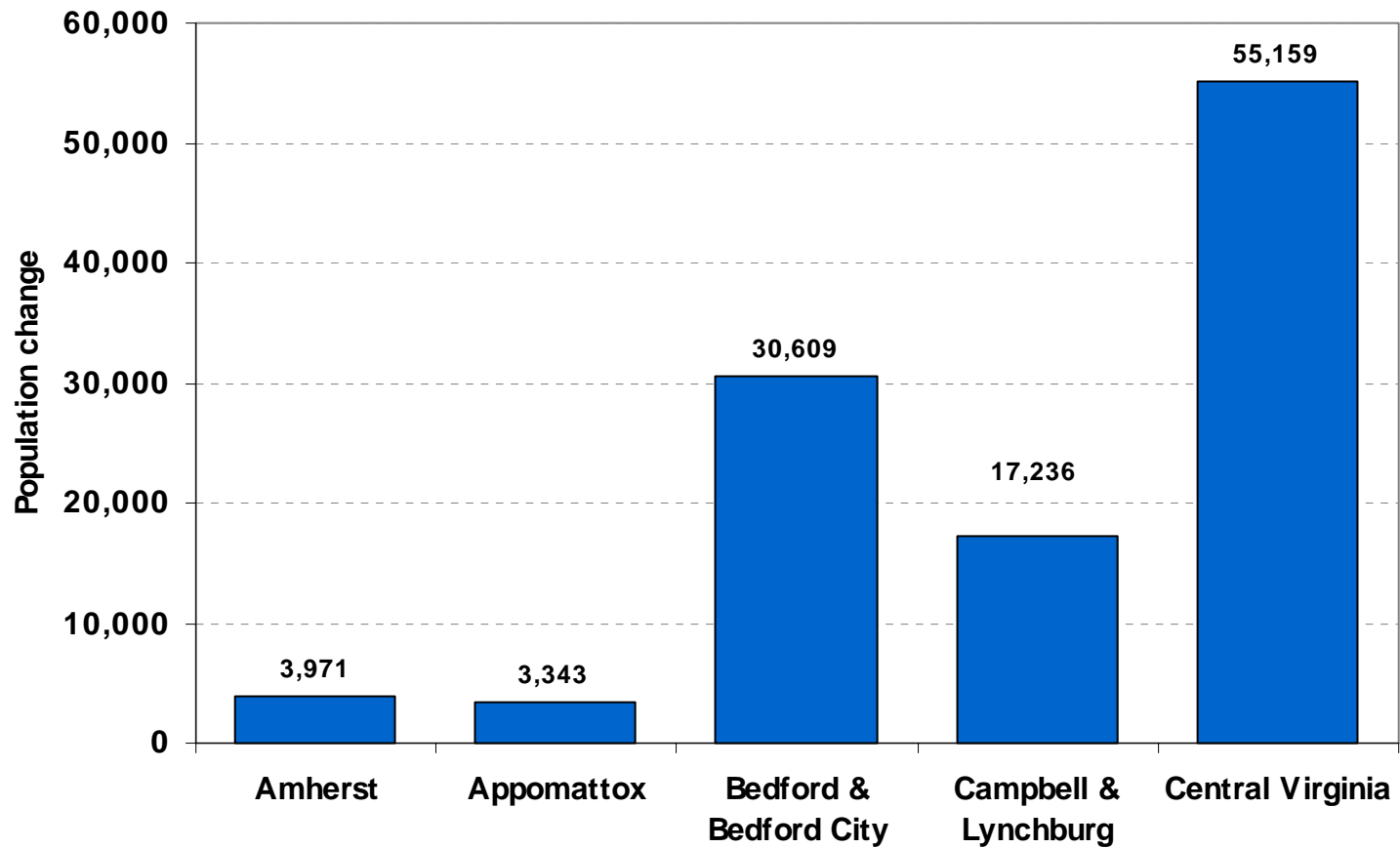


Planning District Commissions: Southside West Piedmont Central Virginia Piedmont



**CENTRAL VIRGINIA
PLANNING DISTRICT
COMMISSION**

POPULATION



- ◆ About 80% in Campbell, Lynchburg, and Bedford County
- ◆ Rapid population growth in Bedford County
- ◆ Slight decline in Lynchburg

POPULATION

- ◆ Total population about 220,000
- ◆ Most population growth due to in-migration
- ◆ Amherst and Appomattox quite rural

RACE AND AGE

- ◆ About 1 in 5 in region is black
- ◆ Median age of population about 2 years older than state median age
- ◆ About 25% of population in Bedford County is 65 or older

EMPLOYMENT

- ◆ Job growth is bit slower than state average, but about equal to national average
- ◆ About 25% of workforce employed in manufacturing
- ◆ Manufacturing jobs concentrated in Lynchburg and Campbell County

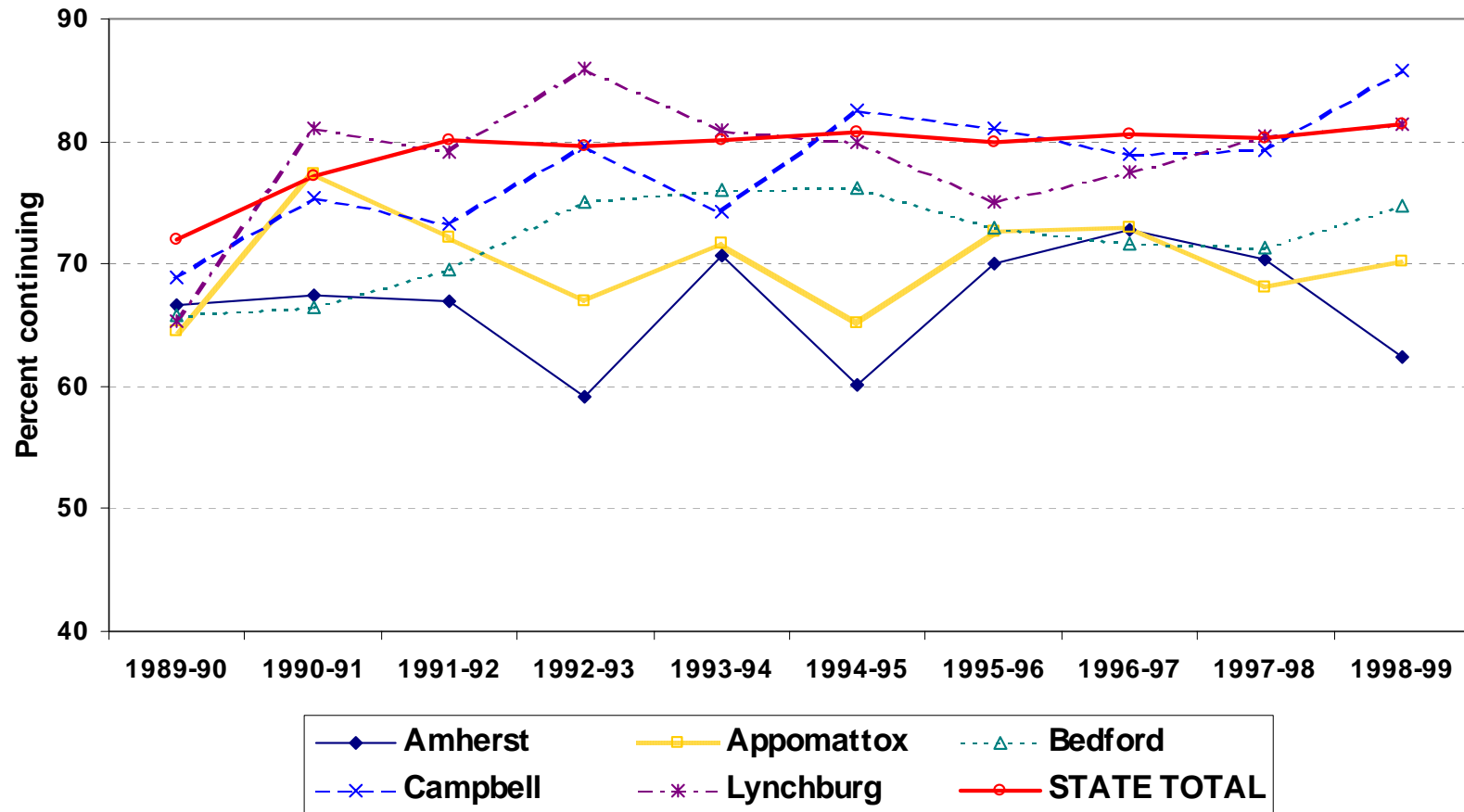
COMMUTING

- ◆ Lynchburg and Campbell County are magnets for commuters
- ◆ Bedford County increasingly bedroom community
- ◆ About 30% of workers commute toward Roanoke

EDUCATION

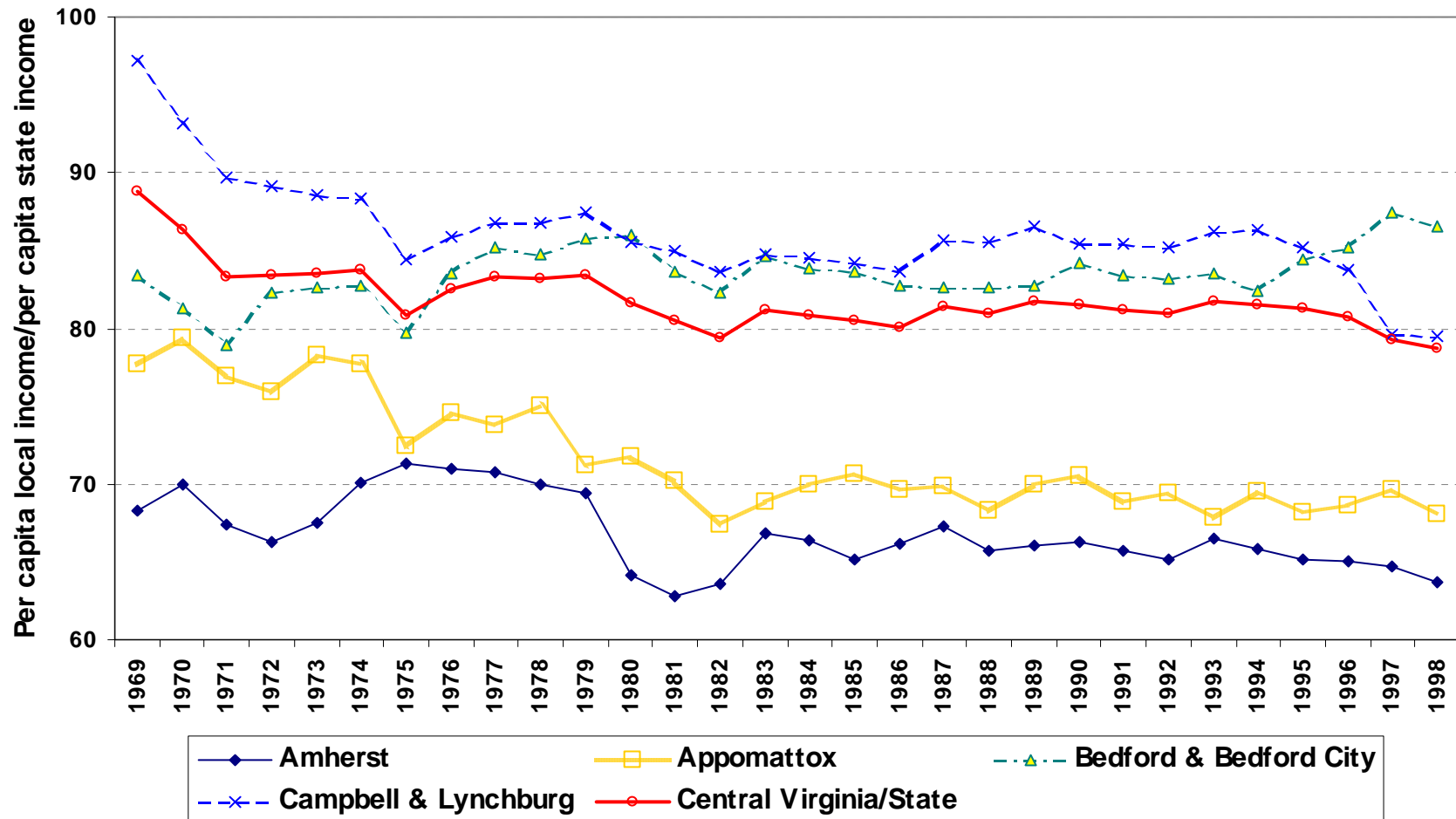
- ◆ Almost 90% of population 25 and older, in 1990, finished high school
- ◆ Except for Campbell County, district trails state in percent of ninth graders finishing high school
- ◆ High school test scores in Lynchburg are about state average; other localities behind

EDUCATION BEYOND HIGH SCHOOL



- ◆ Amherst, Appomattox, and Bedford (County and City) below state average in percent continuing education after high school

INCOME



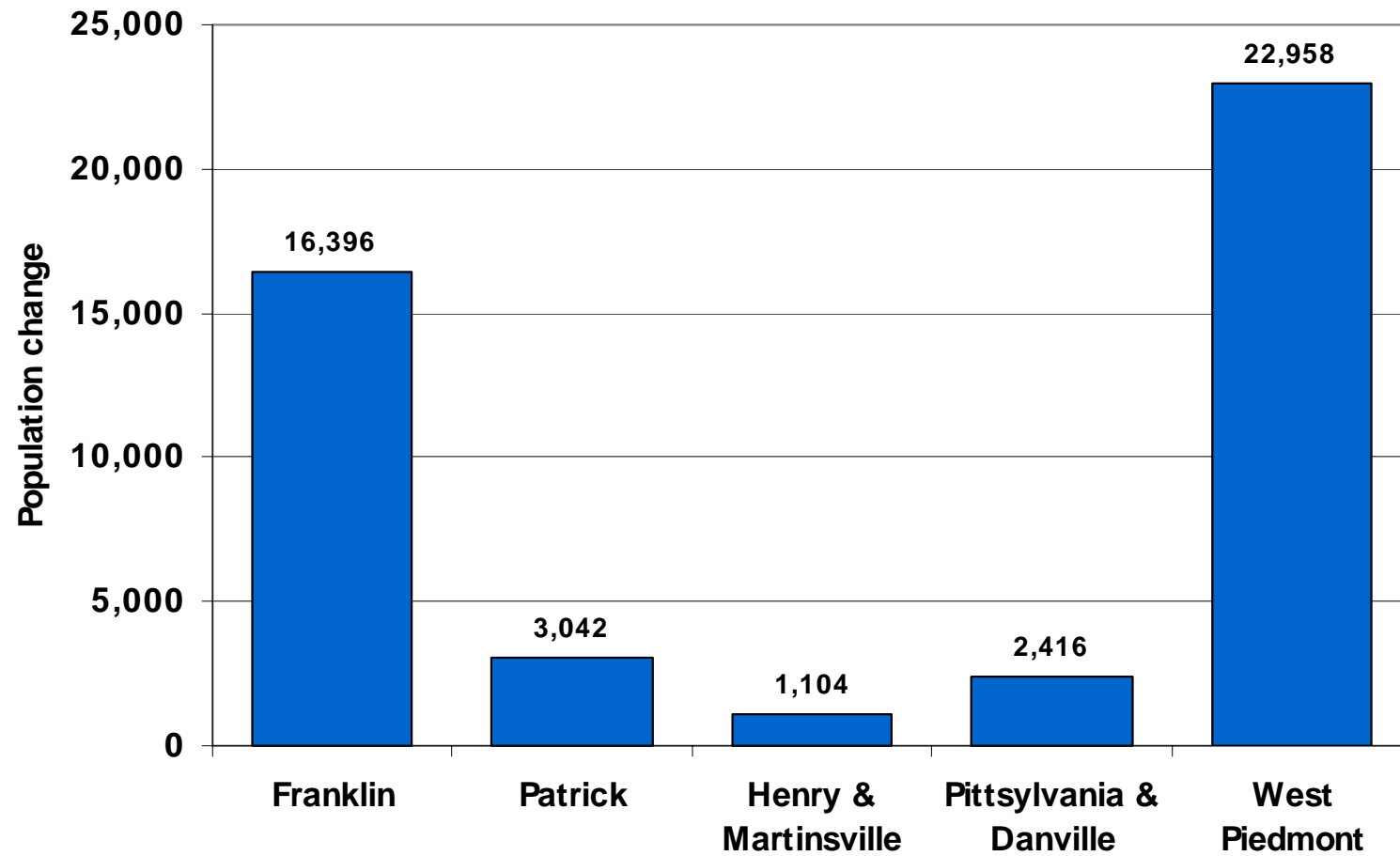
- ◆ Region lost ground relative to state in per capita income: 89% in 1969 and 79% in 1998
- ◆ Amherst is least affluent at 63.6% of state average

**WEST PIEDMONT
PLANNING DISTRICT
COMMISSION**

POPULATION

- ◆ Total district population just under 250,000
- ◆ About 80% of population in Danville, Martinsville, Henry, and Pittsylvania
- ◆ Population growth among slowest of all Planning Districts in Virginia

POPULATION



◆ Franklin most rapidly growing area in district

RACE AND POPULATION

- ◆ About 1 in 4 is black
- ◆ Median age is about 4 years older than state median age
- ◆ Especially high percent of people 65 and older

EMPLOYMENT

- ◆ Heart of traditional manufacturing economy in Virginia
- ◆ More than 1/3 of workers employed in manufacturing
- ◆ Employment growth among slowest in Virginia
- ◆ Unemployment high and rising in late 1990s

RETAIL SALES

- ◆ Danville remains chief retail center
- ◆ More than 80% of retail sales are in Danville, Pittsylvania, Martinsville, and Henry

AGRICULTURE

- ◆ About half of farms operated by full-time farmers
- ◆ Pittsylvania historically the leading flue cured tobacco county in Virginia
- ◆ Franklin remains major dairy producing area

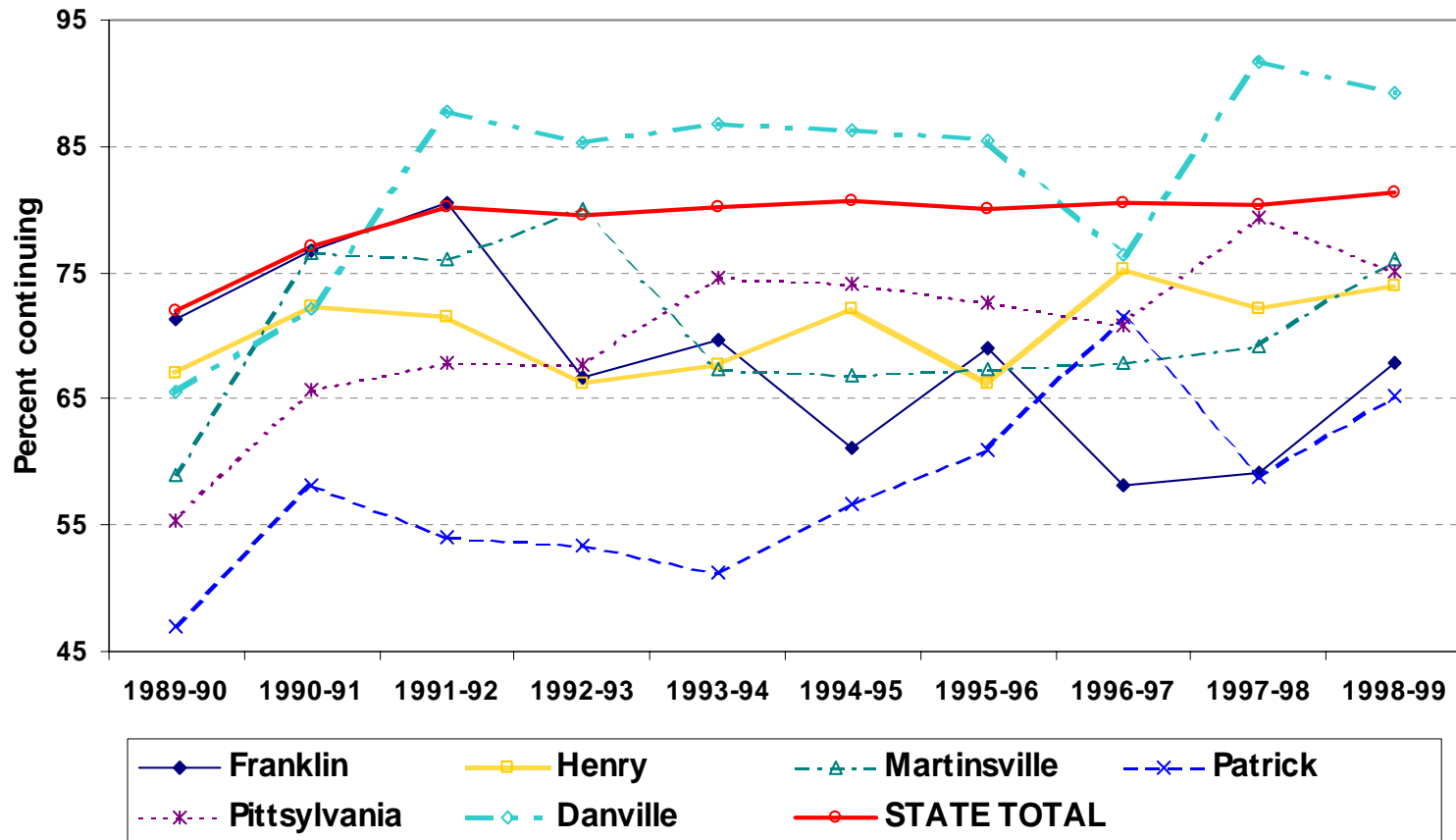
COMMUTING

- ◆ Two separate commuting centers:
Martinsville and Danville
- ◆ Growing out-commuting from Franklin to
Roanoke
- ◆ Some out-commuting to Campbell and
south into North Carolina

EDUCATION

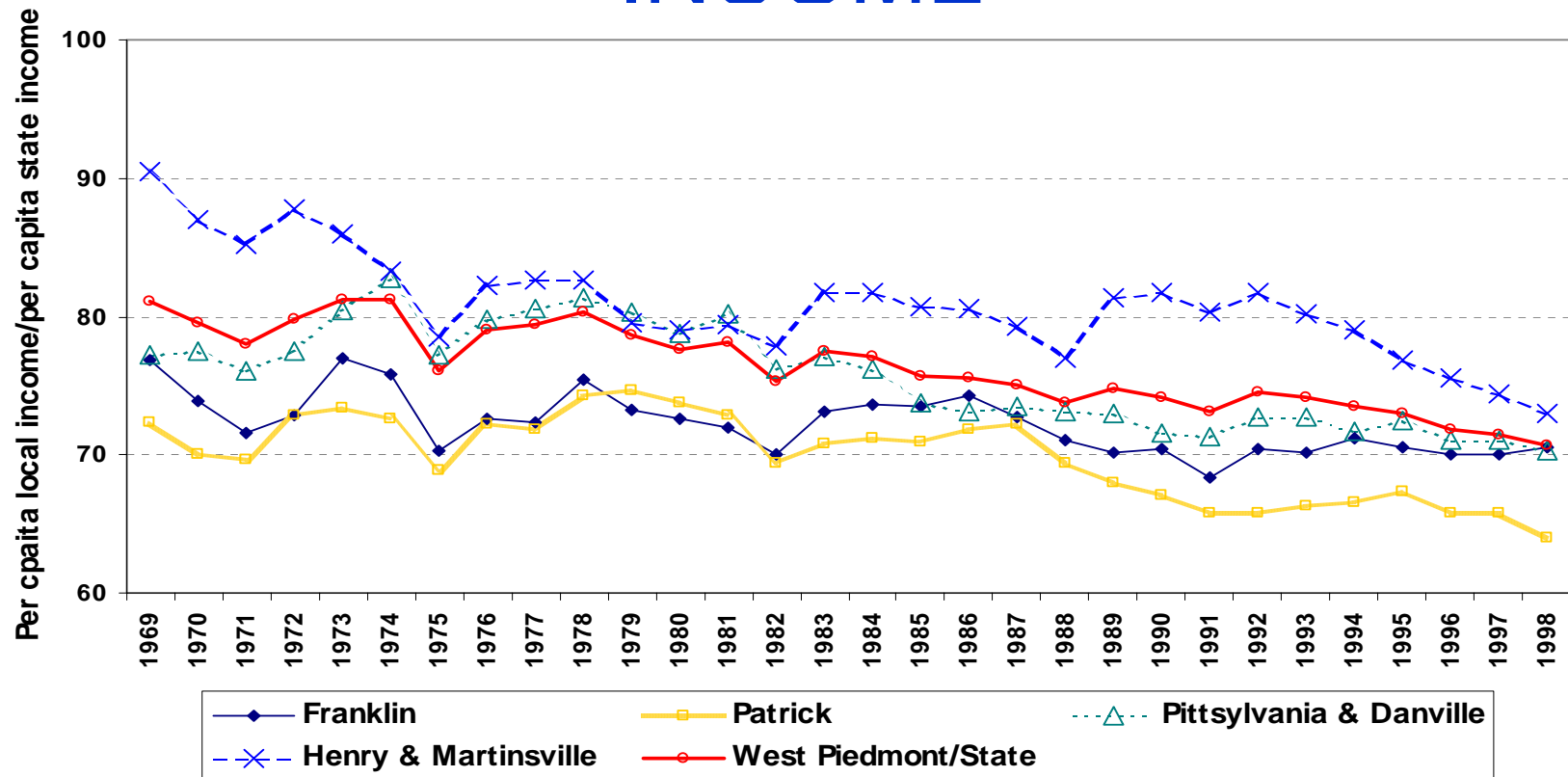
- ◆ Trails state with average educational attainment with more than 40% of people over 25 lacking high school diploma
- ◆ Graduating about same percent of ninth graders as state average
- ◆ High school test scores about 20% below state average

EDUCATION BEYOND HIGH SCHOOL



- ◆ Only students from Danville continuing education after high school at higher percentage than state average

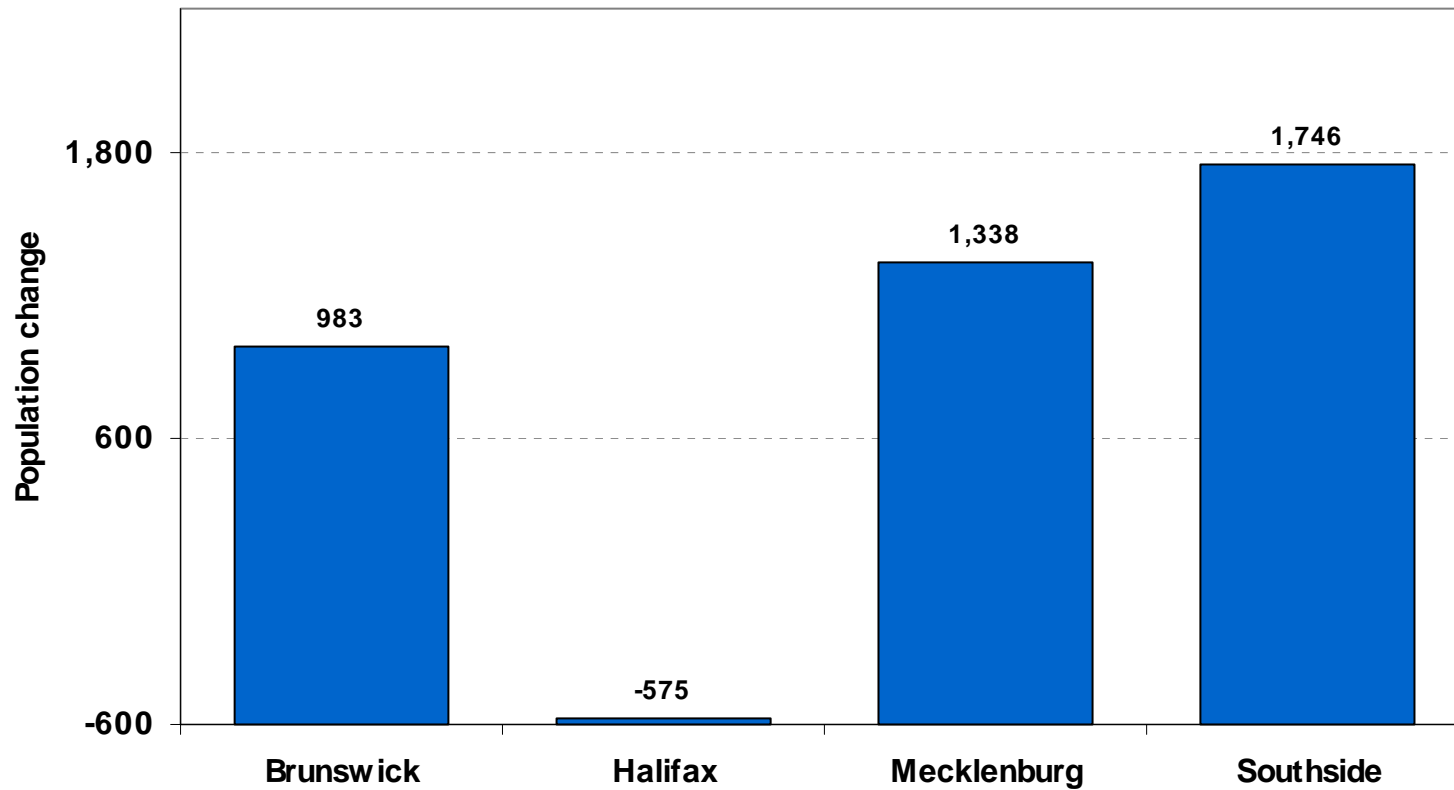
INCOME



- ◆ Income declining in district relative to state average since 1969
- ◆ Per capita income about 71% of state average
- ◆ Henry and Martinsville highest per capita income at 73% of state average
- ◆ Patrick lowest at 64% of state average

SOUTHSIDE PLANNING DISTRICT COMMISSION

POPULATION



- ◆ Total population about 85,000
- ◆ 45% in Halifax
- ◆ Mecklenburg fastest growing
- ◆ South Boston largest incorporated place

RACE AND AGE

- ◆ Just under 45% of population is black, the second highest proportion of any Planning District in Virginia
- ◆ More than 60% of population in Brunswick County is black
- ◆ Median age is about four years older than State median age
- ◆ Age distribution patterns in Brunswick and Mecklenburg affected by presence of prisons

EMPLOYMENT

- ◆ Modest employment growth in Halifax and Mecklenburg, but shrinking in Brunswick
- ◆ More than one in four jobs in manufacturing, primarily textiles and apparel
- ◆ Farm jobs account for about 10% of jobs in Brunswick and 8% in Halifax
- ◆ Tobacco accounts for \$9.00 of every \$10.00 in farm sales
- ◆ Mecklenburg has nearly 1,000 tourist-related jobs

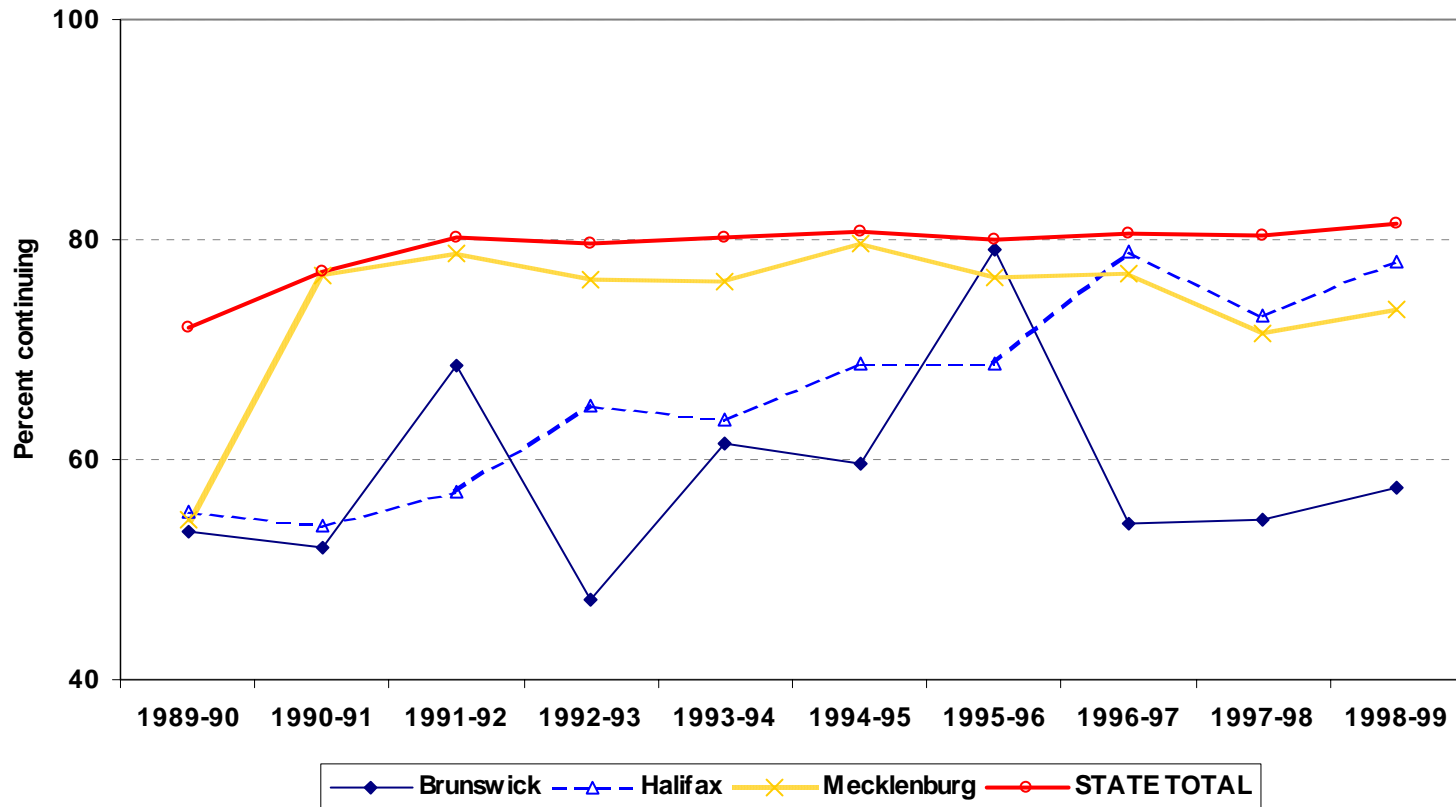
COMMUTING

- ◆ Little out-of-county commuting
- ◆ Some cross-county commuting: Brunswick to Mecklenburg and Halifax to Campbell
- ◆ Virtually no commuting into North Carolina

EDUCATION

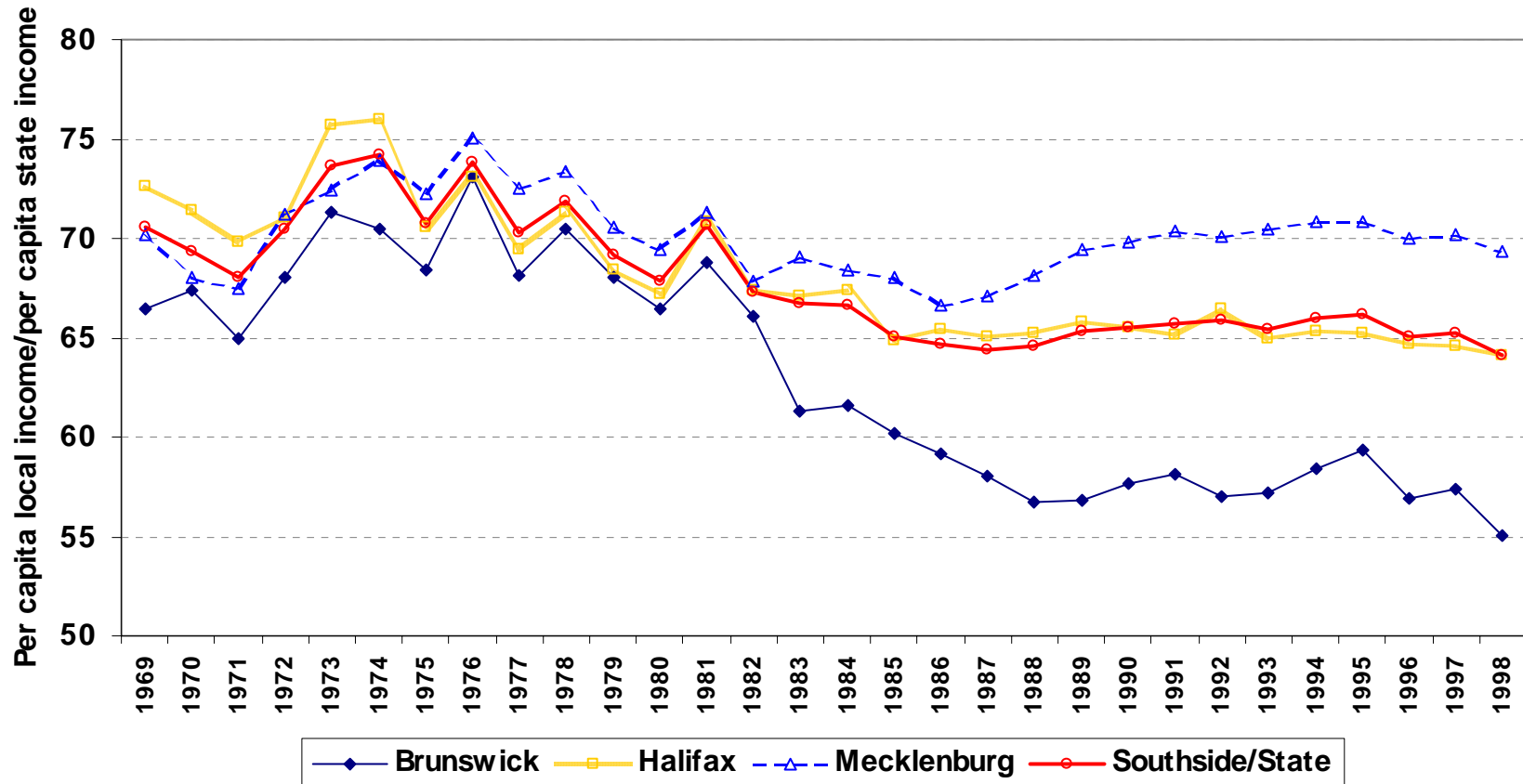
- ◆ More than 1/3 of population 25 and older in 1990 had not finished high school
- ◆ Close to state average in percent of ninth graders finishing high school
- ◆ High school test scores well below state average in all fields

EDUCATION BEYOND HIGH SCHOOL



- ◆ Fewer than 10% have four-year degree
- ◆ All lag state average in percentage of high school graduates going on to post-secondary education

INCOME



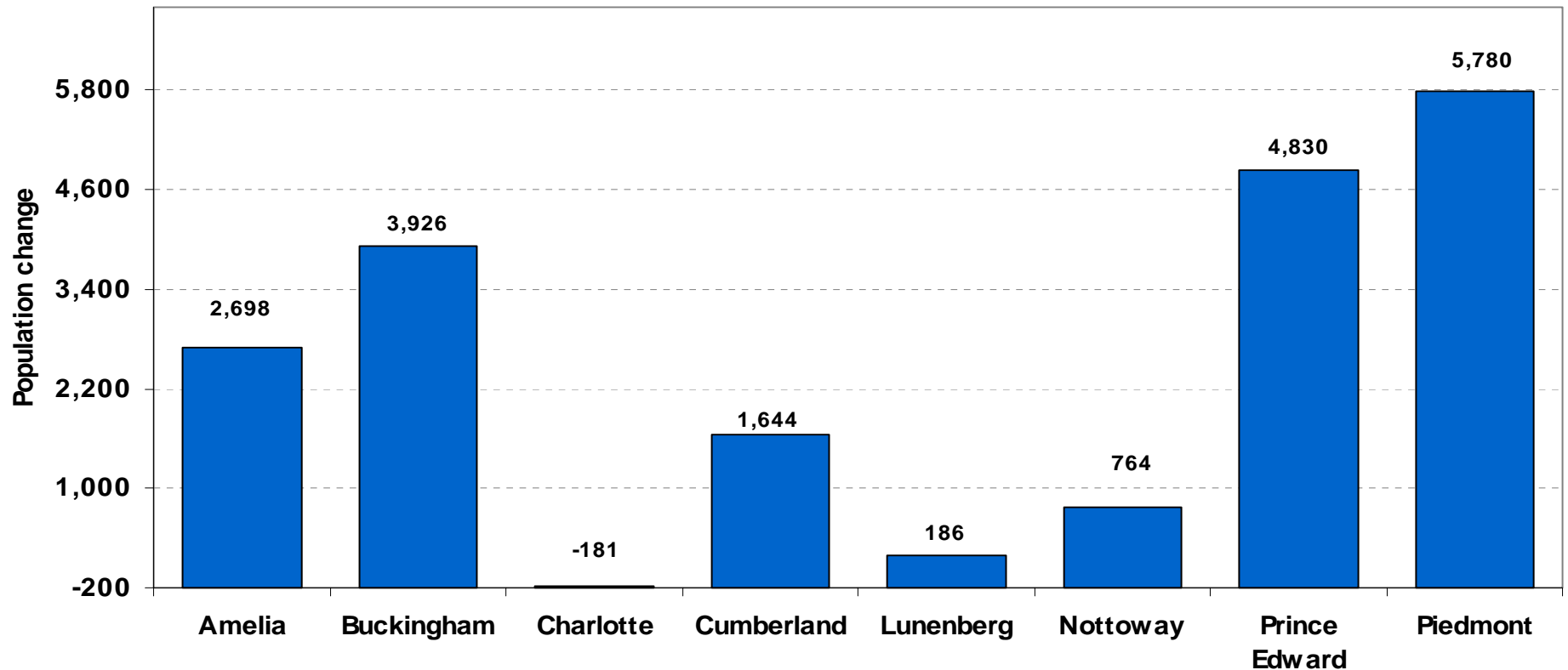
- ◆ Per capita incomes declining for last 30 years relative to state average
- ◆ Mecklenburg most affluent: 70% of state
- ◆ Brunswick poorest: 55% of state

**PIEDMONT
PLANNING DISTRICT
COMMISSION**

POPULATION

- ◆ Total district population about 90,000
- ◆ Population widely distributed with no major urban center
- ◆ About 20% of population in Prince Edward County

POPULATION



- ◆ Amelia, Buckingham, Prince Edward growing relatively fast, mostly from net in-migration
- ◆ Charlotte losing population

RACE AND POPULATION

- ◆ About 40% of population in each county and the district is black
- ◆ Median age about two years older than state

EMPLOYMENT

- ◆ Employment growth slower than state average
- ◆ Manufacturing employment shrinking
- ◆ Unemployment rates high by state and national standards
- ◆ Government sector largest employer
- ◆ Longwood College largest employer in District; schools are largest employer in each county
- ◆ Prisons significant employers
- ◆ Charlotte County major farming county: average annual sales per farm exceeds \$100,000
- ◆ 7% of jobs in farming, forestry, and fishing

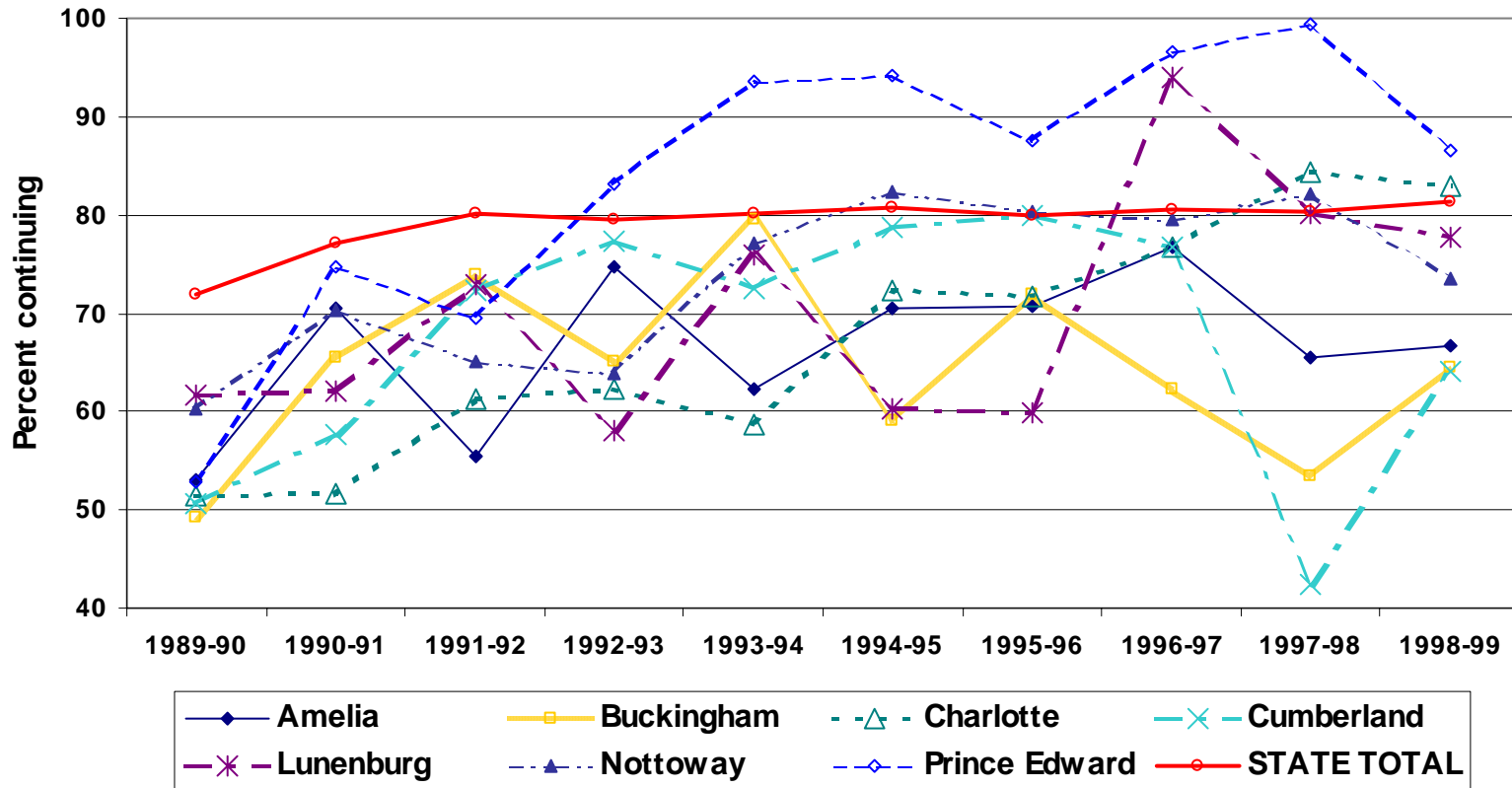
COMMUTING

- ◆ Almost 1 in 3 residents commute to jobs outside district
- ◆ Chief commuting magnets: Richmond and its suburbs
- ◆ Within district, Chief commuter magnet: Prince Edward
- ◆ Farmville is major retail center in district

EDUCATION

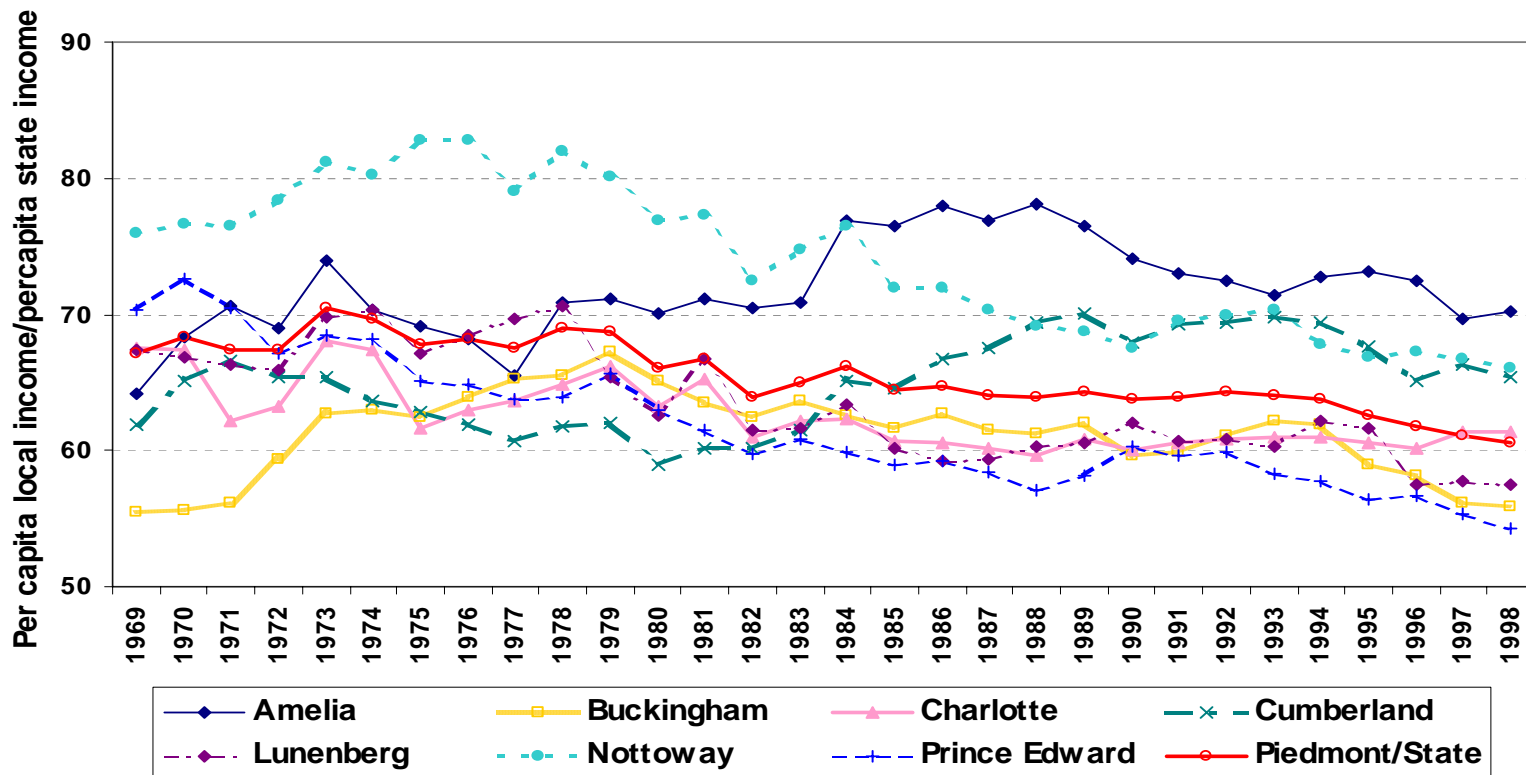
- ◆ In 1990, about 1/3 of population 25 and older had finished high school
- ◆ About 70% of ninth graders finish high school, but great variation among counties
- ◆ Generally, high school test scores well below state averages

EDUCATION BEYOND HIGH SCHOOL



- ◆ Except for Prince Edward and Charlotte counties, percent of high school graduates continuing after high school lags state

INCOME



- ◆ Overall poorest district in region: per capita income 60% of state average and falling
- ◆ Highest per capita income in Amelia, which is becoming bedroom community for Richmond
- ◆ Prince Edward has lowest per capita income of any in region