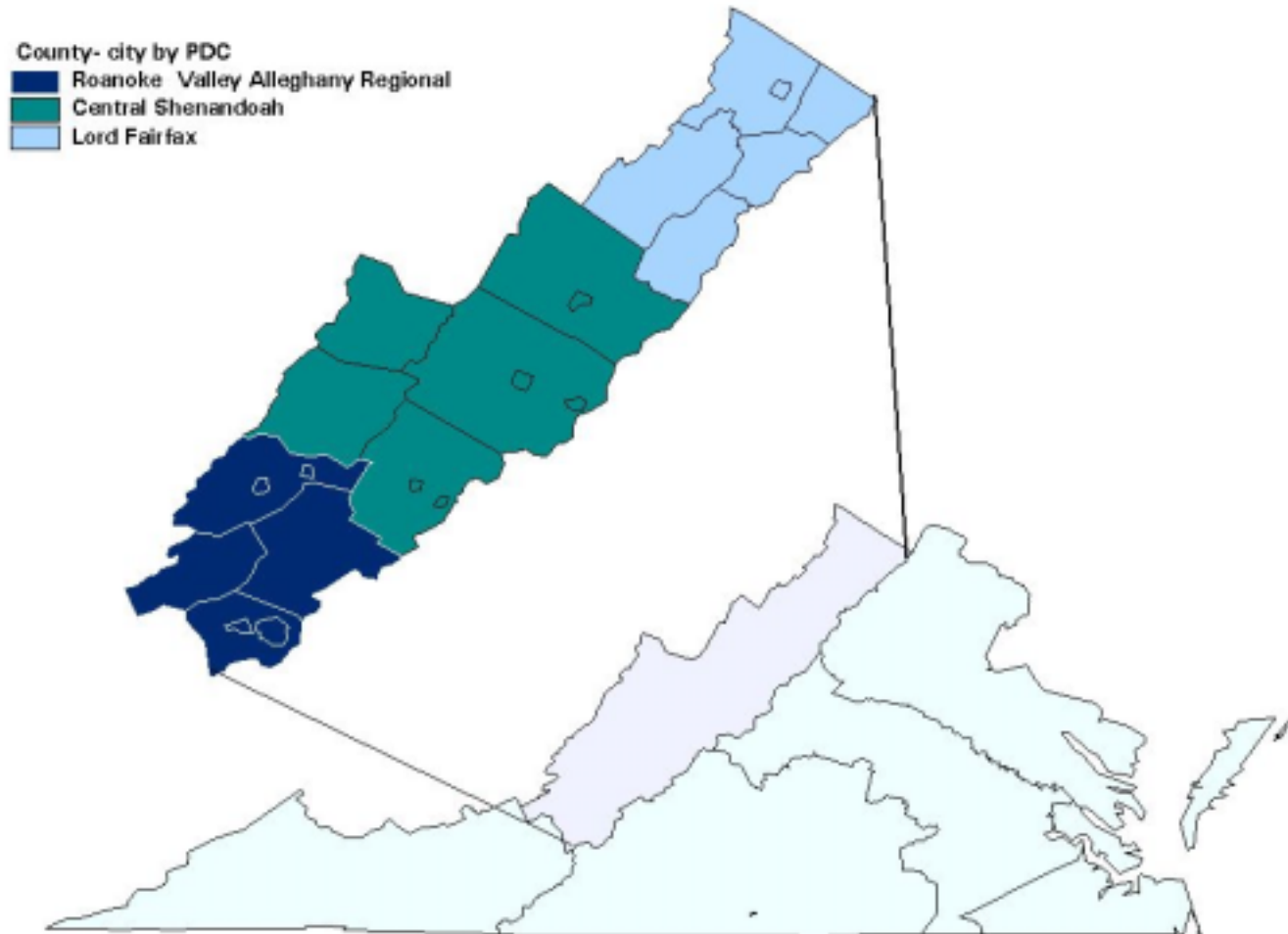


Economic Indicators in Planning
Districts 5 (Roanoke Valley -
Alleghany Regional), 6 (Central
Shenandoah), and 7 (Lord Fairfax)

These economic data and descriptive statistics were prepared by Commission staff and presented by Staff Director James Hite at the Regional Meeting in Staunton, October 31, 2000.

Planning District Commissions: Roanoke Valley - Alleghany Regional Central Shenandoah



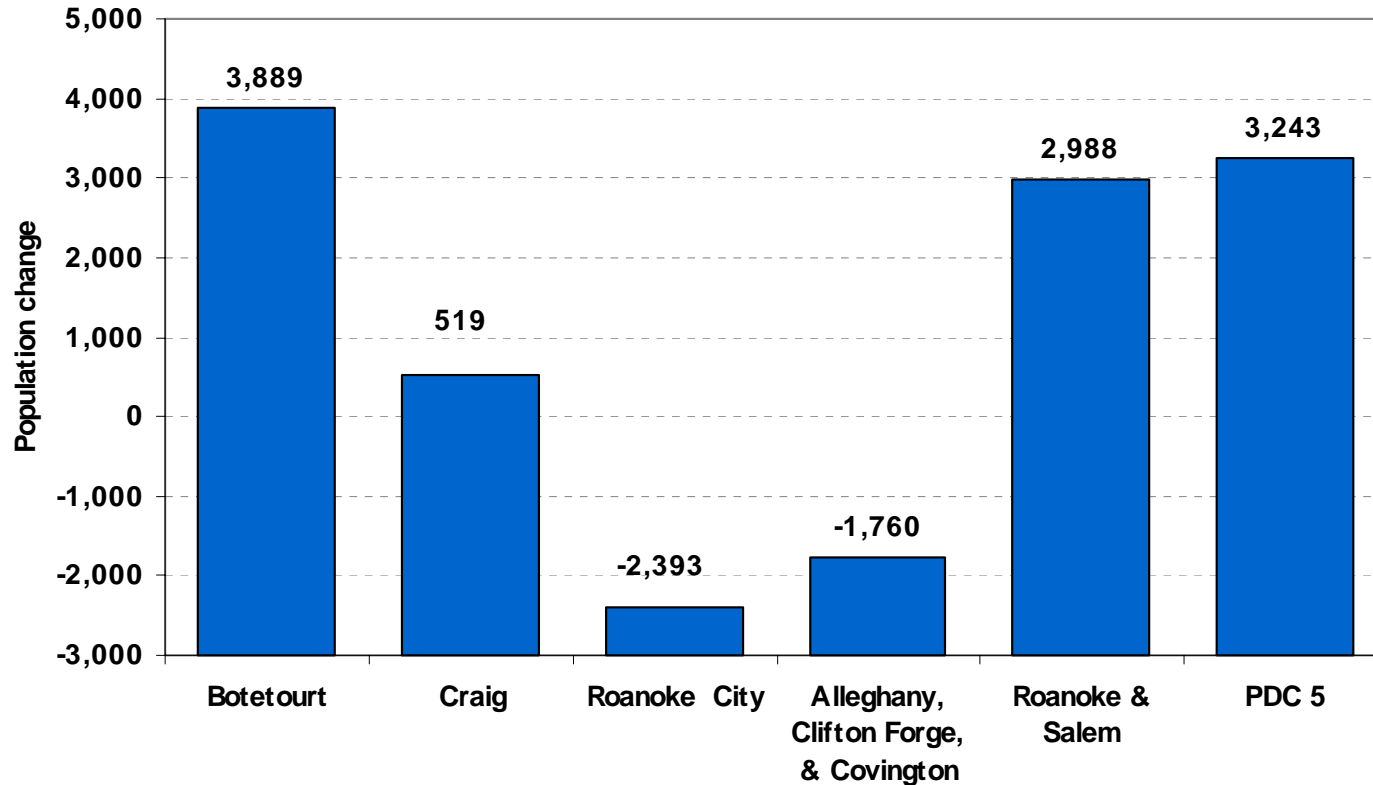
**Roanoke Valley - Alleghany
Regional Planning District
Commission**

PREDOMINANTLY URBAN

- ◆ Total 1998 population about 256,000
- ◆ Roanoke Valley accounts for nearly 90% of population
- ◆ Median age almost five years older than median for Virginia

POPULATION

Population change, 1989-98



- ◆ Modest growth in the region as a whole in the 1990s
- ◆ Fastest rate of growth in Botetourt County

SLOW EMPLOYMENT GROWTH

- ◆ Job growth has been slower than in the state or nation
- ◆ Most rapid job growth in Botetourt County; slowest in Craig County
- ◆ Unemployment rates are low

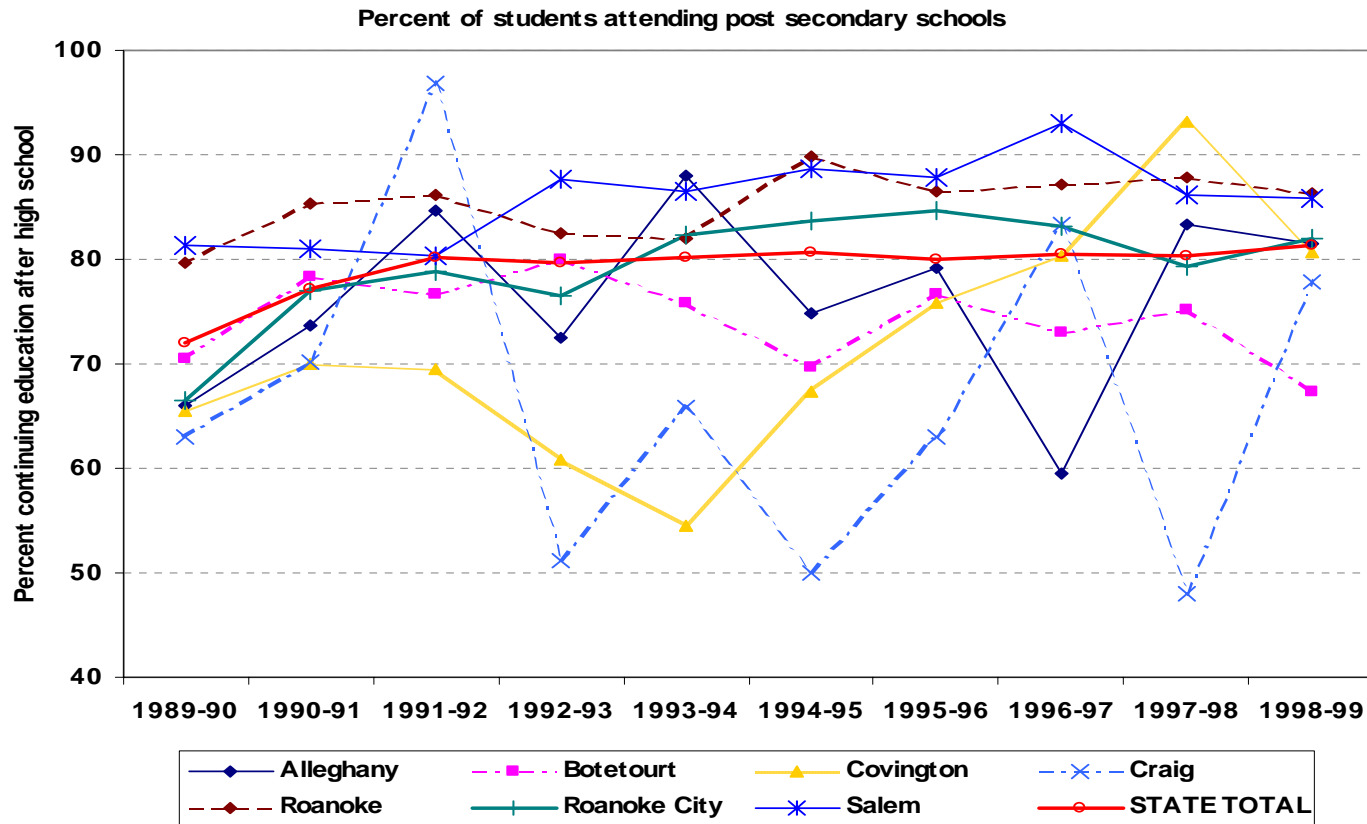
EMPLOYMENT DOMINATED BY TRADE AND SERVICES

- ◆ Almost half the jobs are in the trade and service sectors (schools and hospitals)
- ◆ Manufacturing is important in Salem and Covington, but not dominant for the region as a whole
- ◆ Significant tourist economy dependent upon I-81
- ◆ Half the farm employment is in Botetourt County

COMMUTER MAGNET

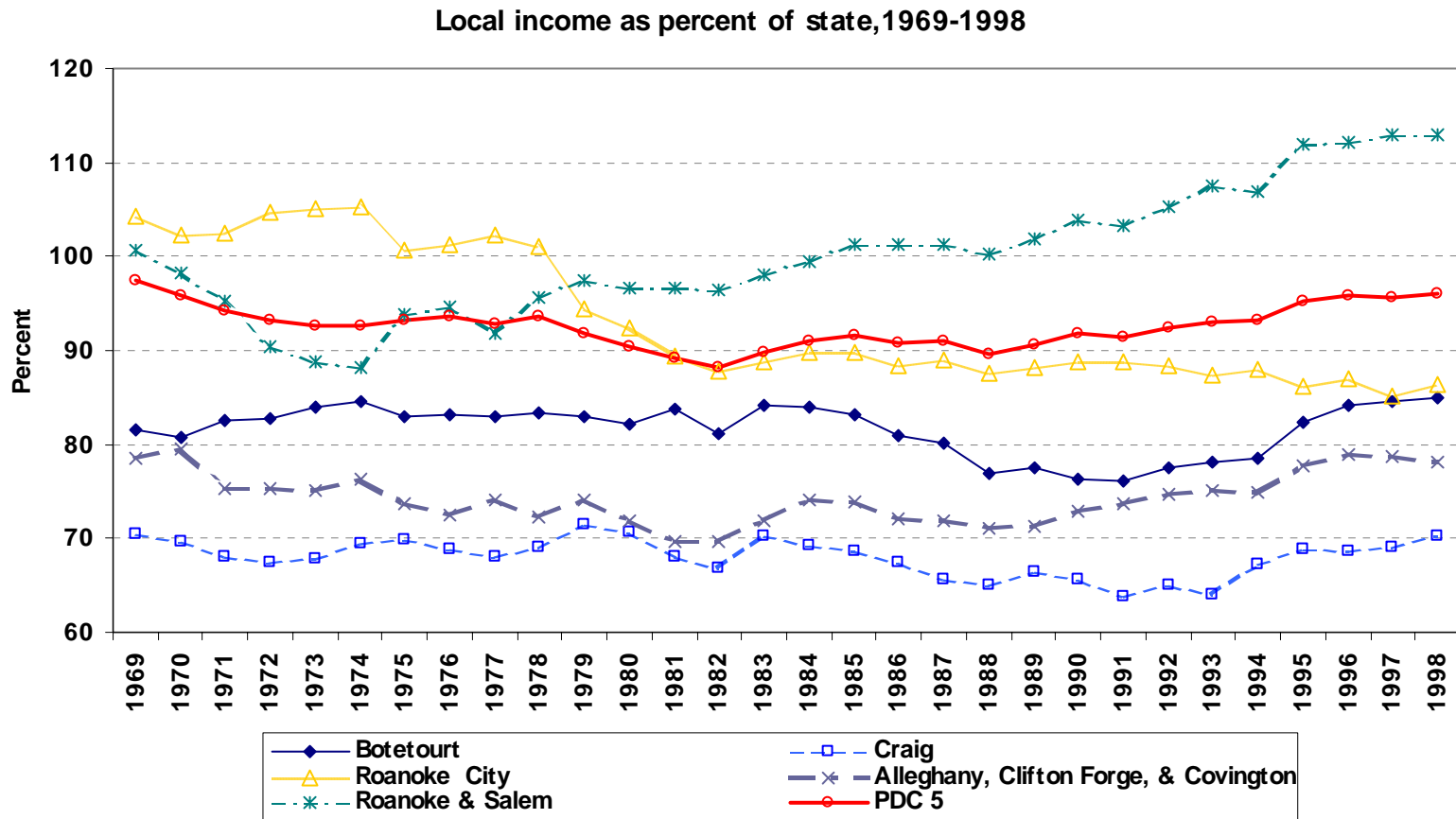
- ◆ Manufacturing centers of Alleghany County— money leaves region as workers return home to West Virginia

EDUCATION BEYOND HIGH SCHOOL



- ◆ Salem and Roanoke County have higher percentage of graduates continuing education beyond high school than the State average
- ◆ Botetourt County has decreasing percent of students continuing their education

REGAINING GROUND ON INCOME



◆ Per capita income, as percent of state, was exactly the same as it was in 1969.

INCOME

- ◆ Region lost ground in the 1970s and 1980s; in 1990, it was 91 percent of the state average
- ◆ Increasing incomes continue throughout the 1990s
- ◆ Lowest per capita income in Craig County, but up from 64 percent of the state average in 1991 to 70 percent in 1998

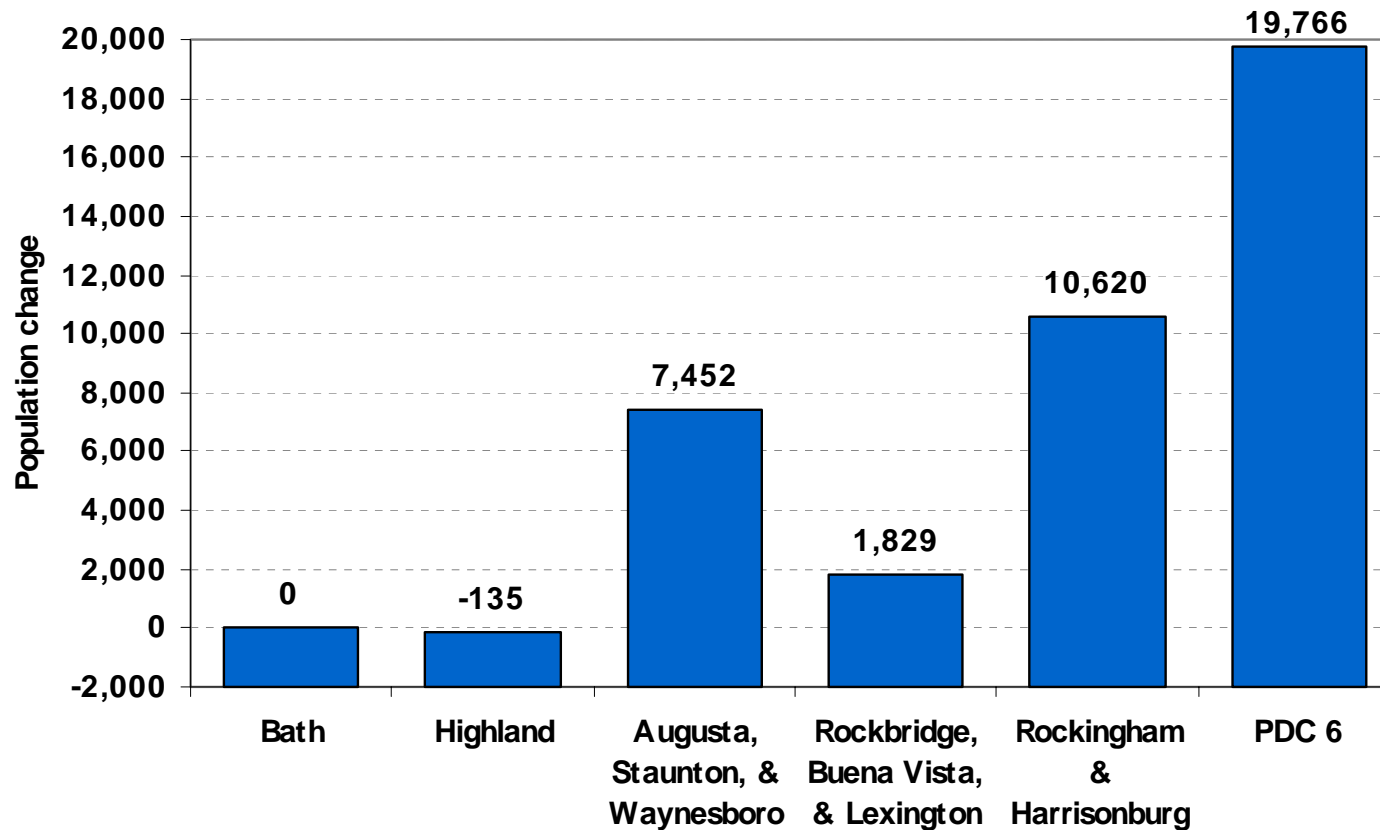
Central Shenandoah Planning District Commission

RURAL REGION WITH SMALLER CITIES AND TOWNS

- ◆ Total population in 1998 of a little less than a quarter million
- ◆ More than half the population concentrated in Augusta and Rockingham counties and the cities of Harrisonburg, Staunton, and Waynesboro
- ◆ No dominant urban center

SLOW POPULATION GROWTH

Population change, 1989-98



- ◆ Population growth of less than one percent annually, below the state average

POPULATION

- ◆ 80 percent of the population growth is the result of in-migration, mostly into the Augusta, Rockingham and Harrisonburg areas and connected to James Madison University
- ◆ Buena Vista and Staunton cities and Bath and Highland counties losing population
- ◆ Median age of the population is two years older than the state as a whole (Knapp)
- ◆ Higher percentage of population under 15 and over 45 than the state as a whole

EMPLOYMENT

- ◆ Job growth in the region has been faster than in the state or the nation
- ◆ Greatest concentration of job growth in the Harrisonburg/Rockingham area
- ◆ Regionally, unemployment below state and national rates
- ◆ About one out of every three jobs in the region are in the service sector
- ◆ Manufacturing is tied to the agricultural sector and represents substantial value-added
- ◆ Because of closings, manufacturing represents a smaller fraction of total employment in 1998 than in 1990.
- ◆ Half the retail jobs in the region are in Rockingham County and Harrisonburg

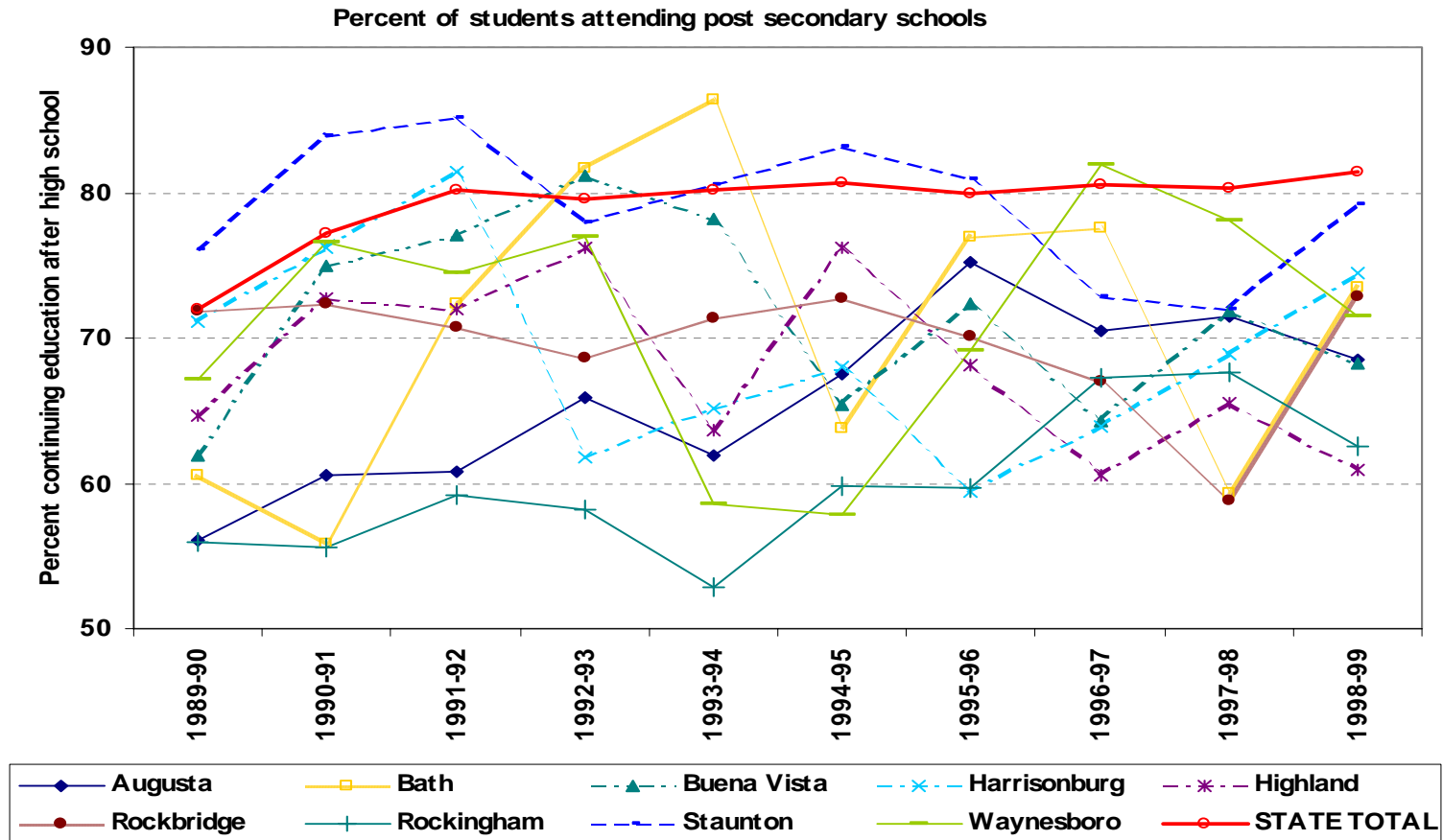
AGRICULTURE REMAINS IMPORTANT

- ◆ One out of every ten farm jobs in Virginia are in the Central Shenandoah region
- ◆ Farm sales from this region account for nearly 25 percent of all farm sales in Virginia
- ◆ Rockingham and Augusta counties remain major farm counties and account for about two-thirds of the farm acreage in the district
- ◆ The farm sector is dominated by livestock and poultry

TOURISM DOMINATES IN BATH COUNTY

- ◆ About 6,000 jobs in the region are dependent upon tourism which accounts for \$350 million annually in revenue
- ◆ Bath County is heavily dependent upon tourism—has 1/3 of all tourism in region.

EDUCATIONAL ATTAINMENT



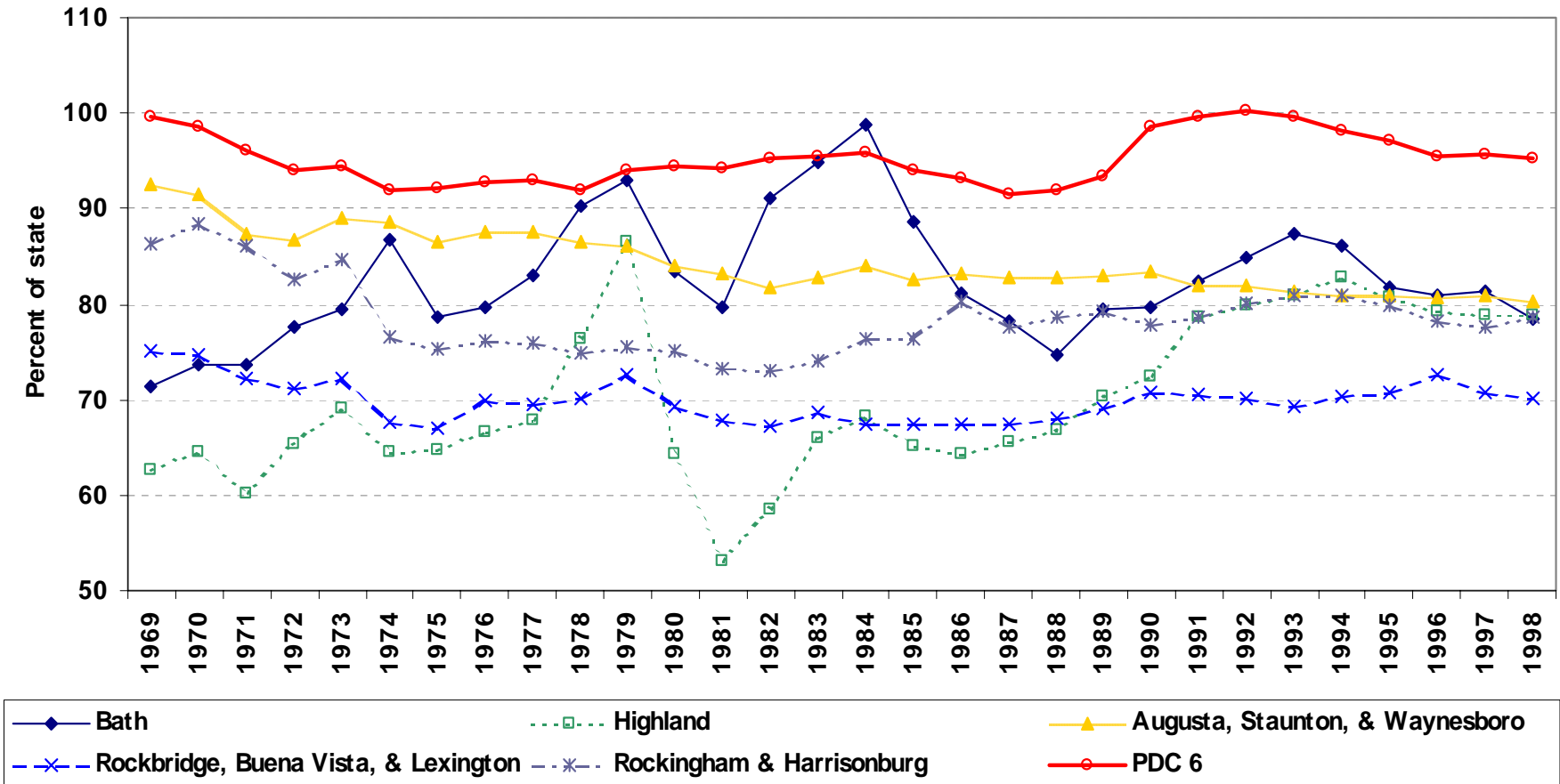
- ◆ Only about 2/3 of the population 25 years old and older in 1990 had finished high school.
- ◆ About 2/3 of high school graduates go on to some type of post-secondary education

INCOME

- The region has lost ground relative to the state on per capita income in the last 30 years, down from 86 percent in 1969 to 78 percent in 1998.
- Rockbridge is the poorest county and Augusta the richest. But no jurisdiction in the region had a per capita income up to the state average in 1998
- Bath is the only county that gained ground on the state relative to per capita income in the 1990s.
- Rockingham and Harrisonburg held their own, but Augusta lost ground from 84 percent in 1990 to 80 percent in 1998

INCOME

Localities percent of state per capita income



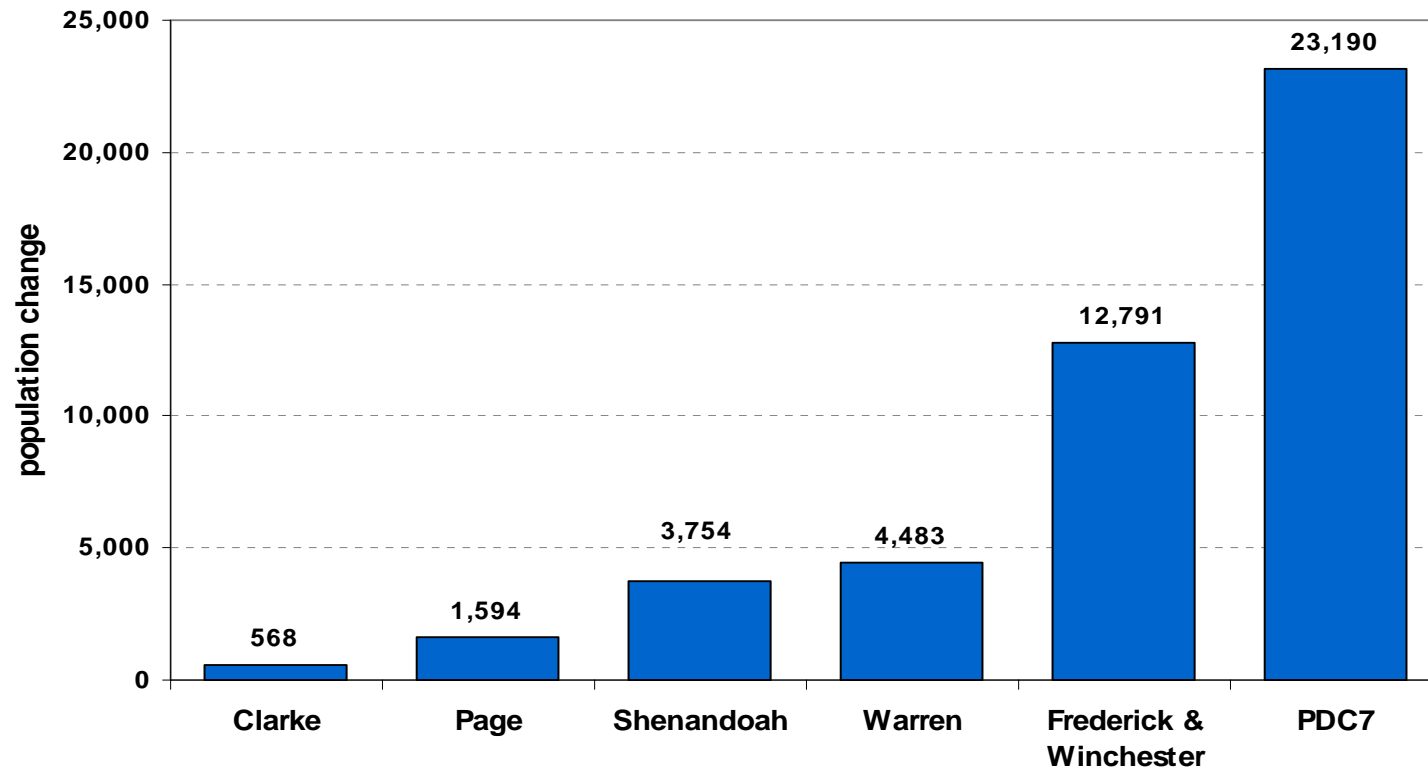
**Lord Fairfax
Planning District Commission**

POPULATION

- ◆ Combined population of the region in 1998 was about 178,000
- ◆ Most of the population due to in-migration
- ◆ Population slightly older than state average, most because of a large proportion of persons 45 years old and older

POPULATION GROWING RAPIDLY

Population change, 1989-1998



- ◆ Population grew at a rate about a third greater than the state rate of growth
- ◆ Half the population growth in the 1990s has been in Frederick County

RAPID JOB GROWTH

- ◆ Job growth in the district has been higher than the state or national rates
- ◆ Manufacturing and services account for about 50 percent of the employment
- ◆ Manufacturing base is diverse with few establishments employing more than 1,000 workers

SUBSTANTIAL OUT-COMMUTING FROM THE REGION

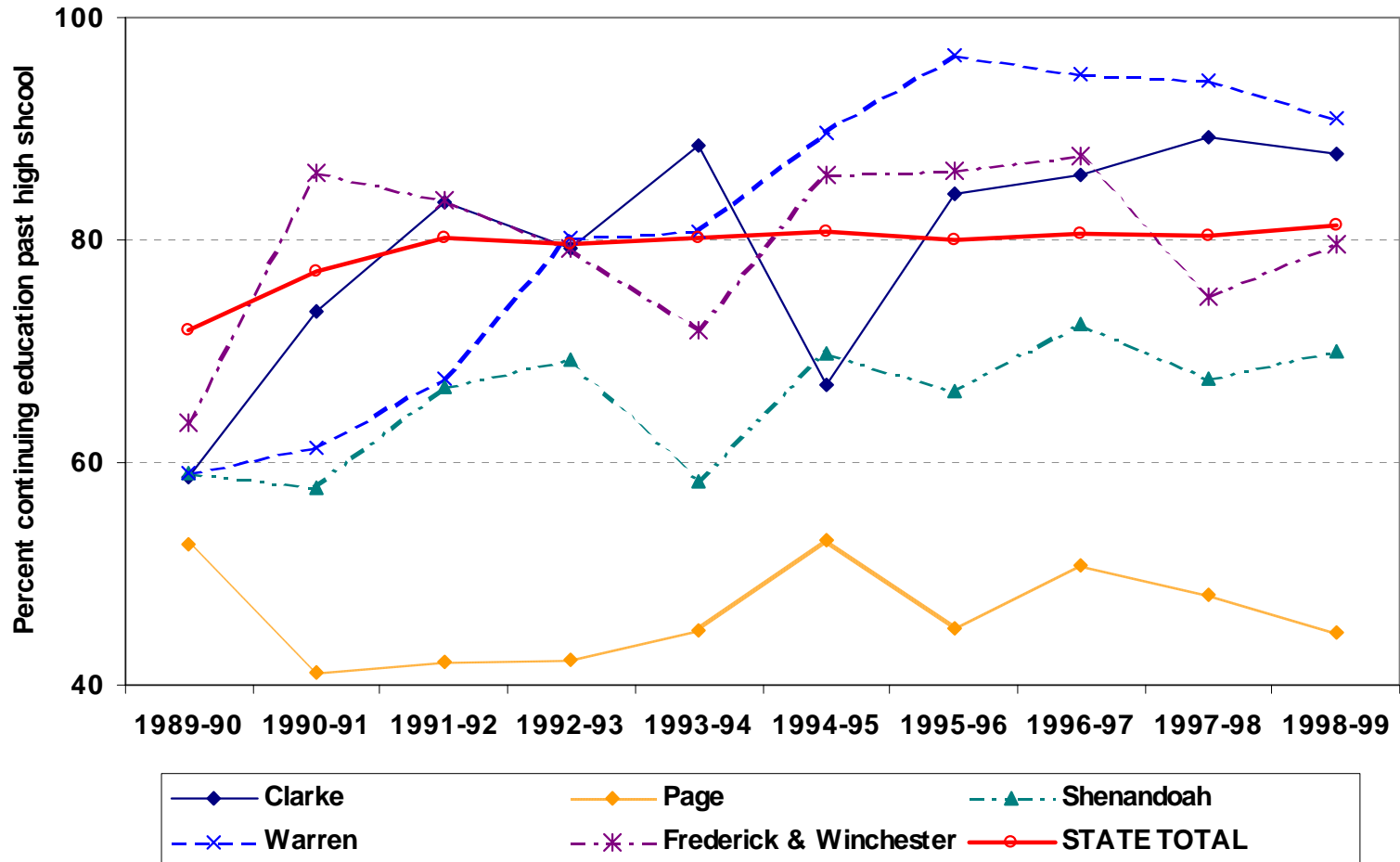
- ◆ About 1/4 of the workers in the region commute to jobs outside the region either to the Washington area or the Harrisonburg/Rockingham area
- ◆ Considerable in-commuting from West Virginia and Maryland

EDUCATIONAL ATTAINMENT

- ◆ Overall, about 75 percent of the high school students in the region are moving on to post secondary education
- ◆ In 1998, 91 percent of the students in Warren had gone on to some form of higher education.
- ◆ In Page County, less than 45 percent are moving on to post secondary education

EDUCATION

Percent of students attending post secondary schools

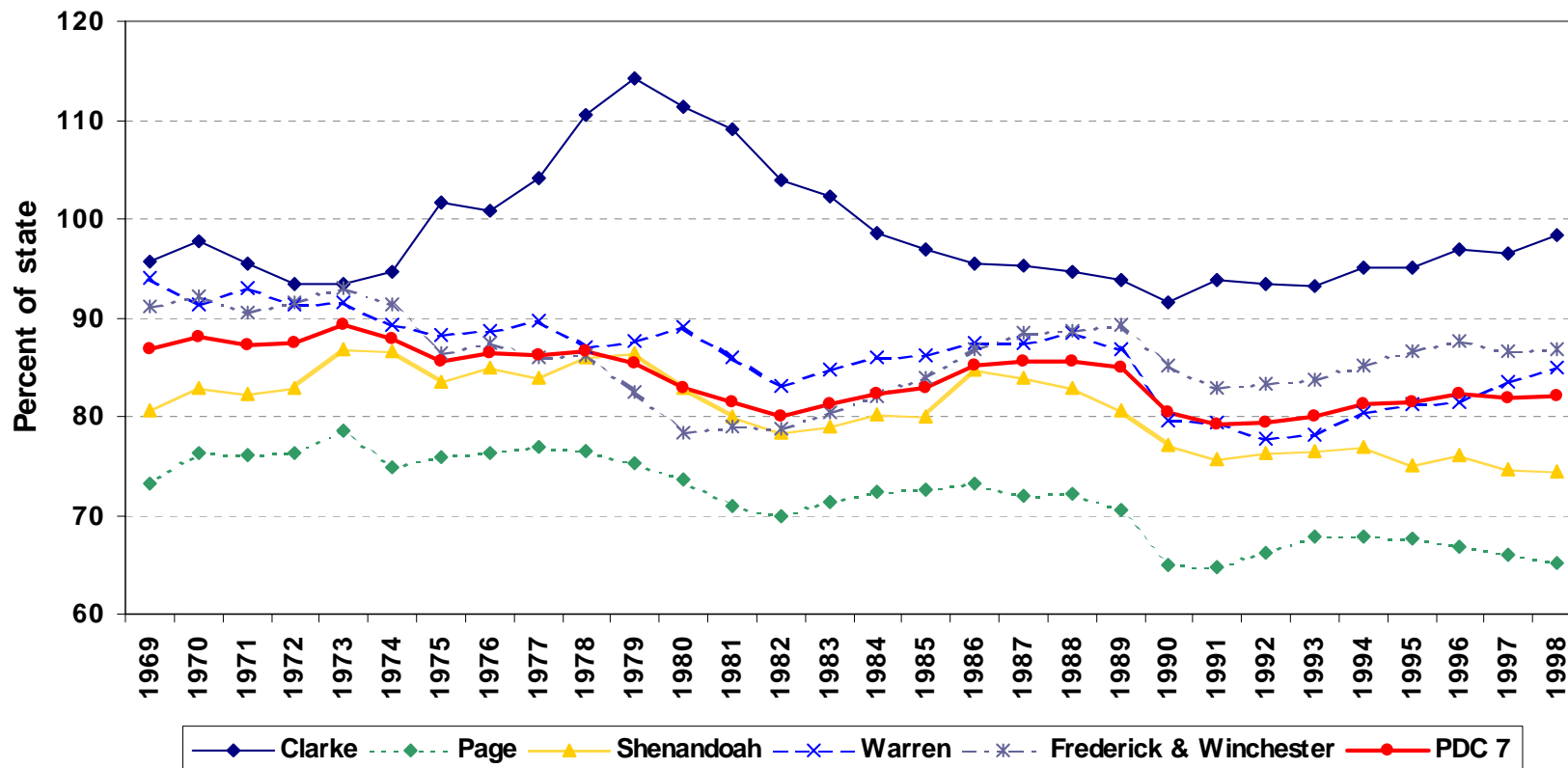


INCOME

- ◆ Regionally, per capita income grew from 80 to 82 percent of the of the state average in the 1990s
- ◆ Clarke County at 98 percent of the state average per capita income is the wealthiest county in the region
- ◆ Page County at 65 percent of the state average is the poorest county in the region, and the poorest county in any of the three planning districts being considered today

INCOME

Local income as percent of state, 1969-1998



- The region lost ground relative to the state in per capita income in the period 1969-98