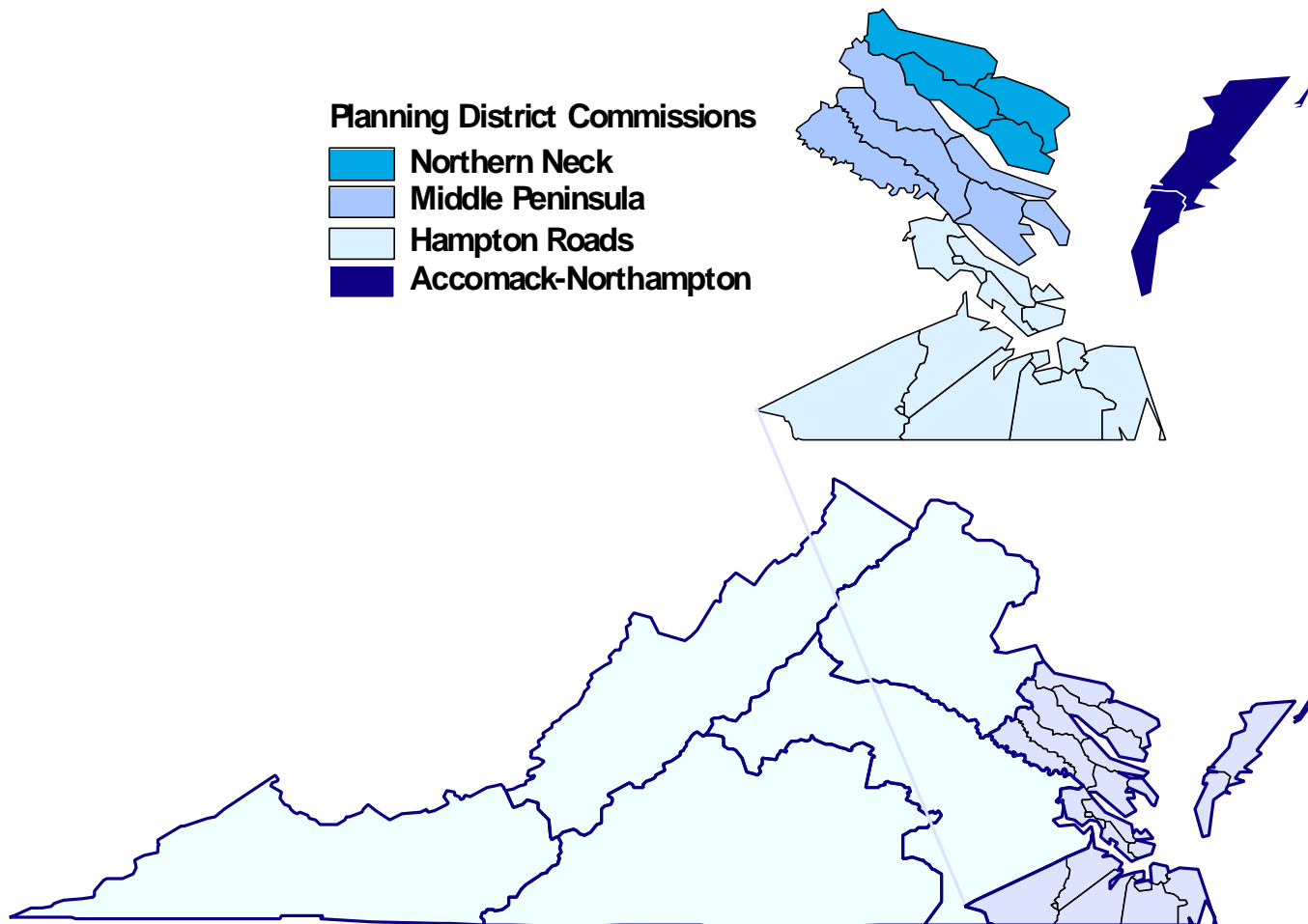


# Northern Neck Middle Peninsula Accomack-Northampton Hampton Roads

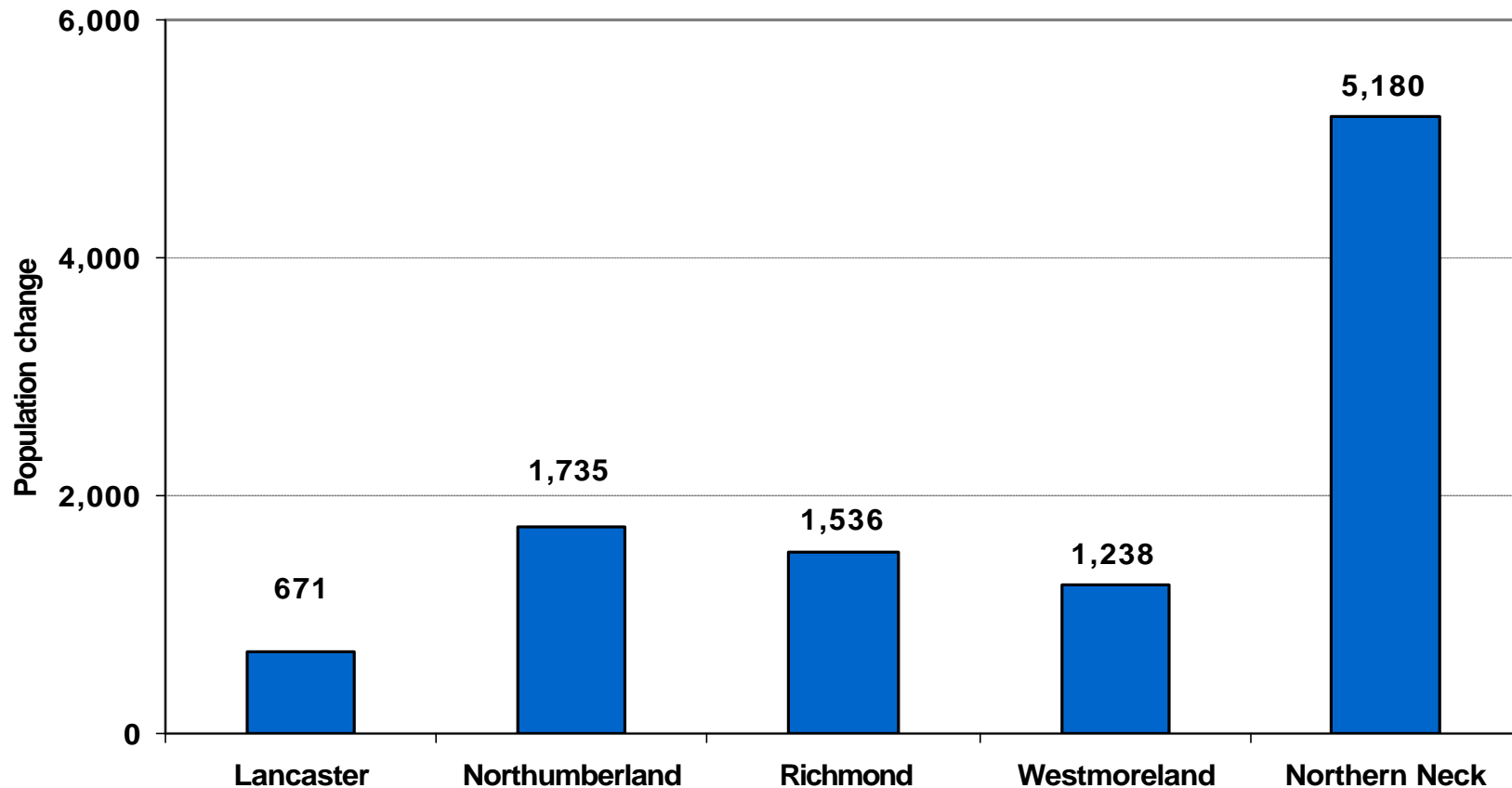


**NORTHERN NECK  
PLANNING DISTRICT COMMISSION**

# POPULATION

- In 2000, total population 49,353
- Median age older than state average reflecting sizeable retirement community
- Lancaster and Northumberland counties: highest median age of any counties in Virginia

# POPULATION



- Overall population growth in 1990s: 11.7 percent compared to 14.4 percent statewide
- Population growth in Northumberland and Richmond greater than statewide average
- Most of 5,000 population growth result of in-migration

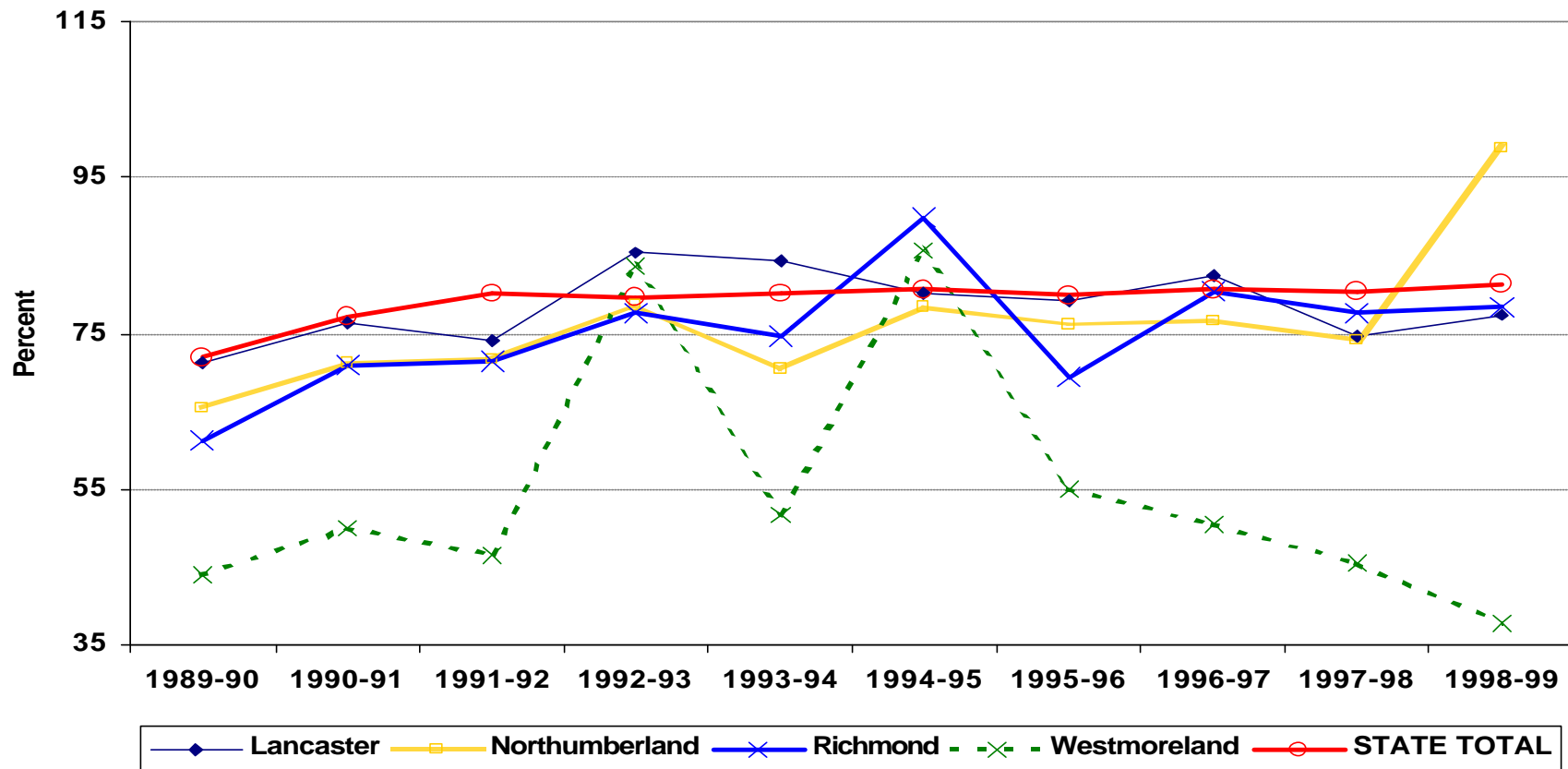
# EMPLOYMENT

- Unemployment rates generally higher than state and national averages
- Employment growth slower than state and national rates
- Most of employment growth in services, retail trade, government, and construction
- Farming accounts for 4.5 percent of the employment
- Substantial tourism spending in Lancaster County

# COMMUTING

- Substantial cross-county commuting within region
- Very little commuting outside the region

# EDUCATION

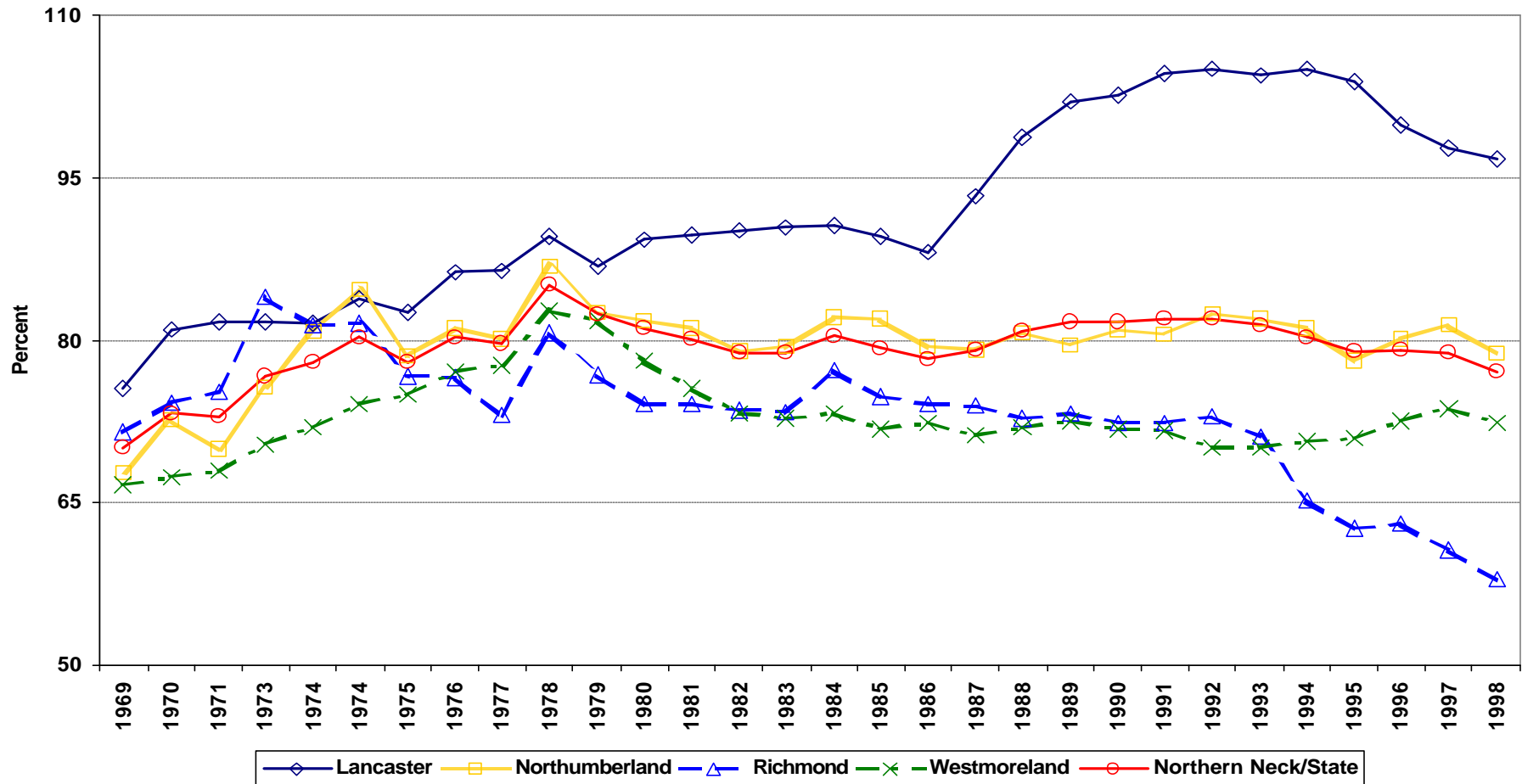


- In 1990, almost 40 percent of Northern Neck residents over 25 with no high school diploma
- Currently, except for Westmoreland County, the percent of Northern Neck high school graduates going on to post-secondary education about same as state

# INCOME

- In 1998, per capita income in the Northern Neck 77 percent of the state average, up from about 70 percent in 1969, but down from about 82 percent in 1990
- Richmond County is now one of the poorer counties in the state

# INCOME



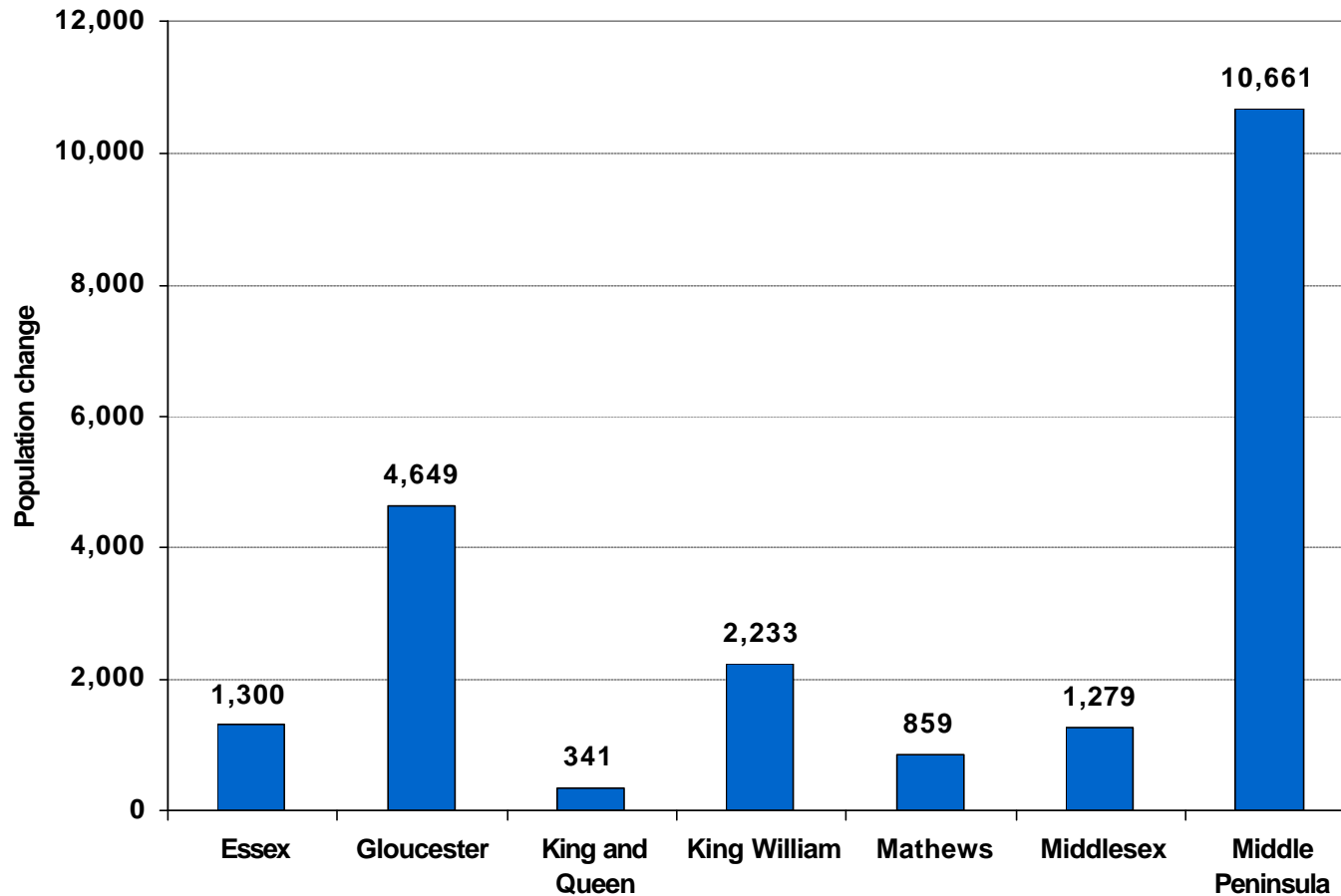
- Big relative gains over the last 30 years in Lancaster County
- Most of losses in Richmond County in the 1990s

**MIDDLE PENINSULA  
PLANNING DISTRICT COMMISSION**

# POPULATION

- Overall population in 2000 of 83,664
- Gained 9,664 residents in the 1990s, all by net immigration
- Overall population growth in the 1990s about the same as the state average

# POPULATION



- Four counties grew faster in percent terms than the state average: Essex, Gloucester, King William, and Middlesex

# EMPLOYMENT

- One of the higher rates of employment growth among Virginia PDCs in the 1990s
- Employment growth uneven: Gloucester--high rate of growth; King and Queen--virtually no growth
- About one of every four workers employed in private services
- Less than 4 percent of jobs on the farm
- Unemployment rate lower than national average and about the same as for the Commonwealth

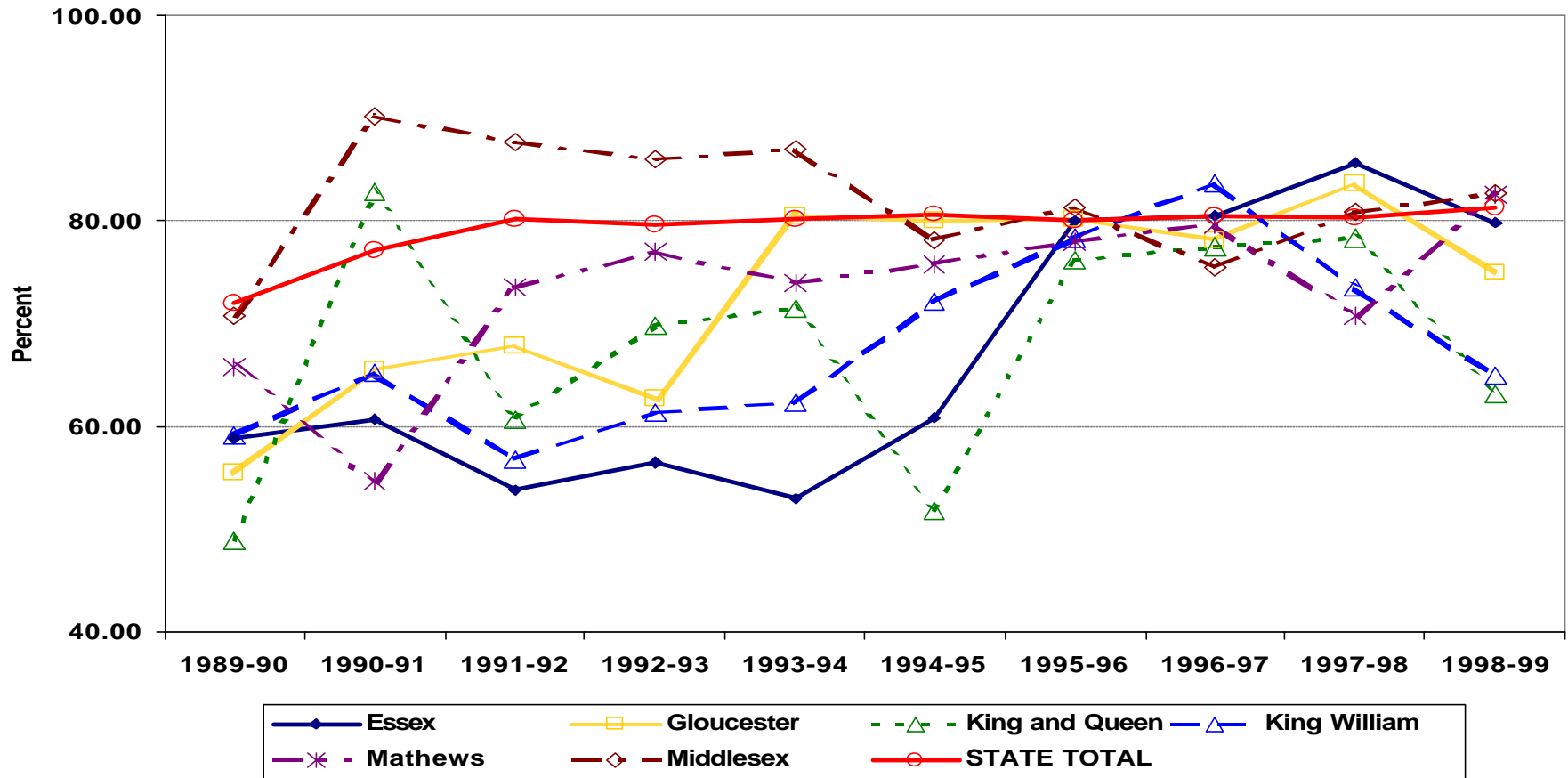
# COMMUTING

- Most workers employed outside their home counties
- Major commuter magnates--Hampton Roads and Richmond regions
  - King William residents to Richmond area
  - Gloucester residents to Newport News

# TOURISM

- Lots of second homes in the region, especially in Middlesex County
- Population in Middlesex almost triples between May and October

# EDUCATION

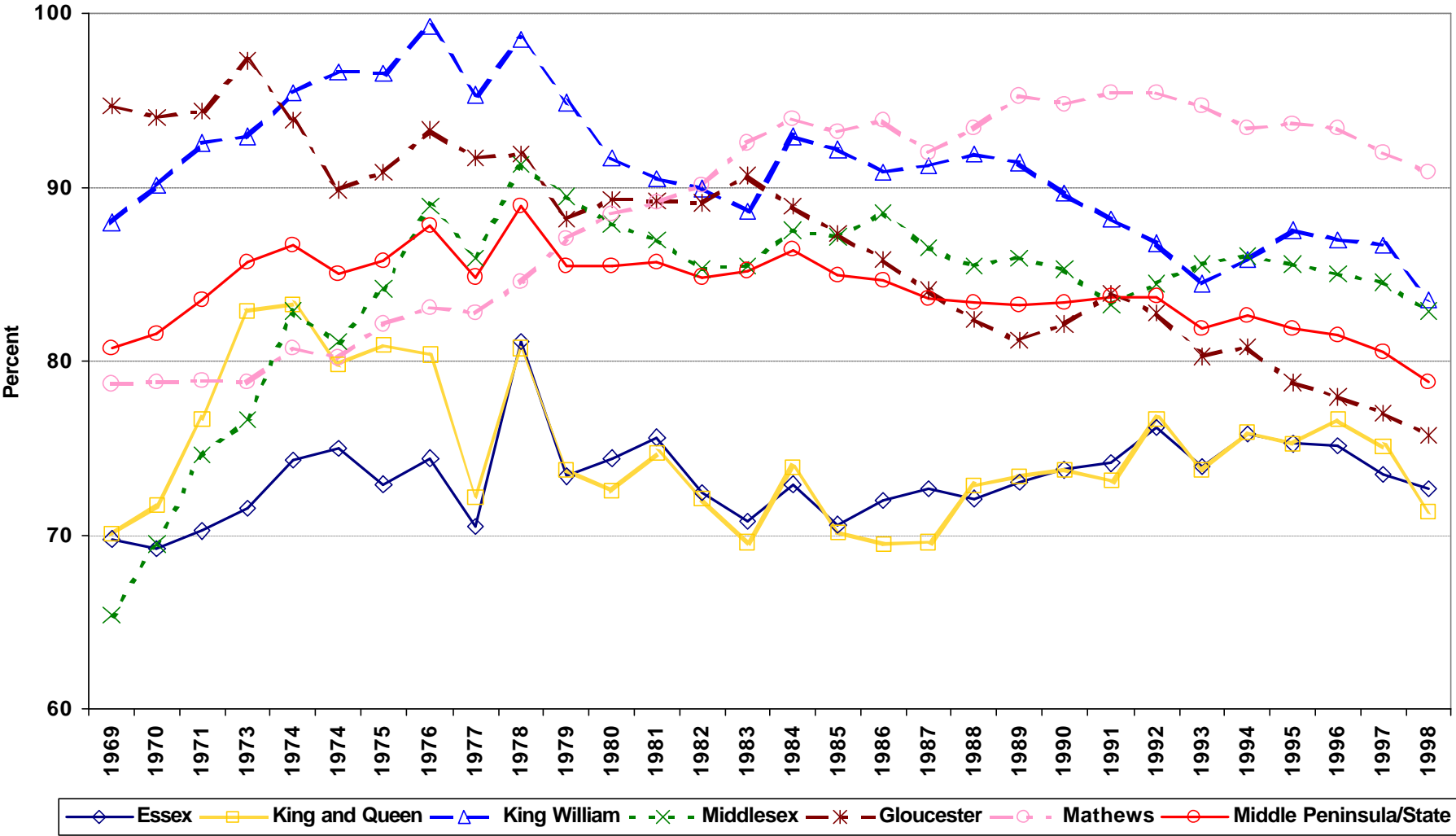


- The region historically lagged state on number of high school graduates going on to post secondary education, but gap closing
- In 1990, about 70 percent of the residents of the region 25 years old and older finished high school

# INCOME

- Middle Peninsula PDC only marginal relative decline in per capita income since 1969
- Gloucester County: major losses relative to the state, down from about 95 percent of the state average in 1969 to about 75 percent in 1998
- Mathews County: major gains relative to the state, up from about 70 percent in 1969 to better than 90 percent in 1998

# INCOME



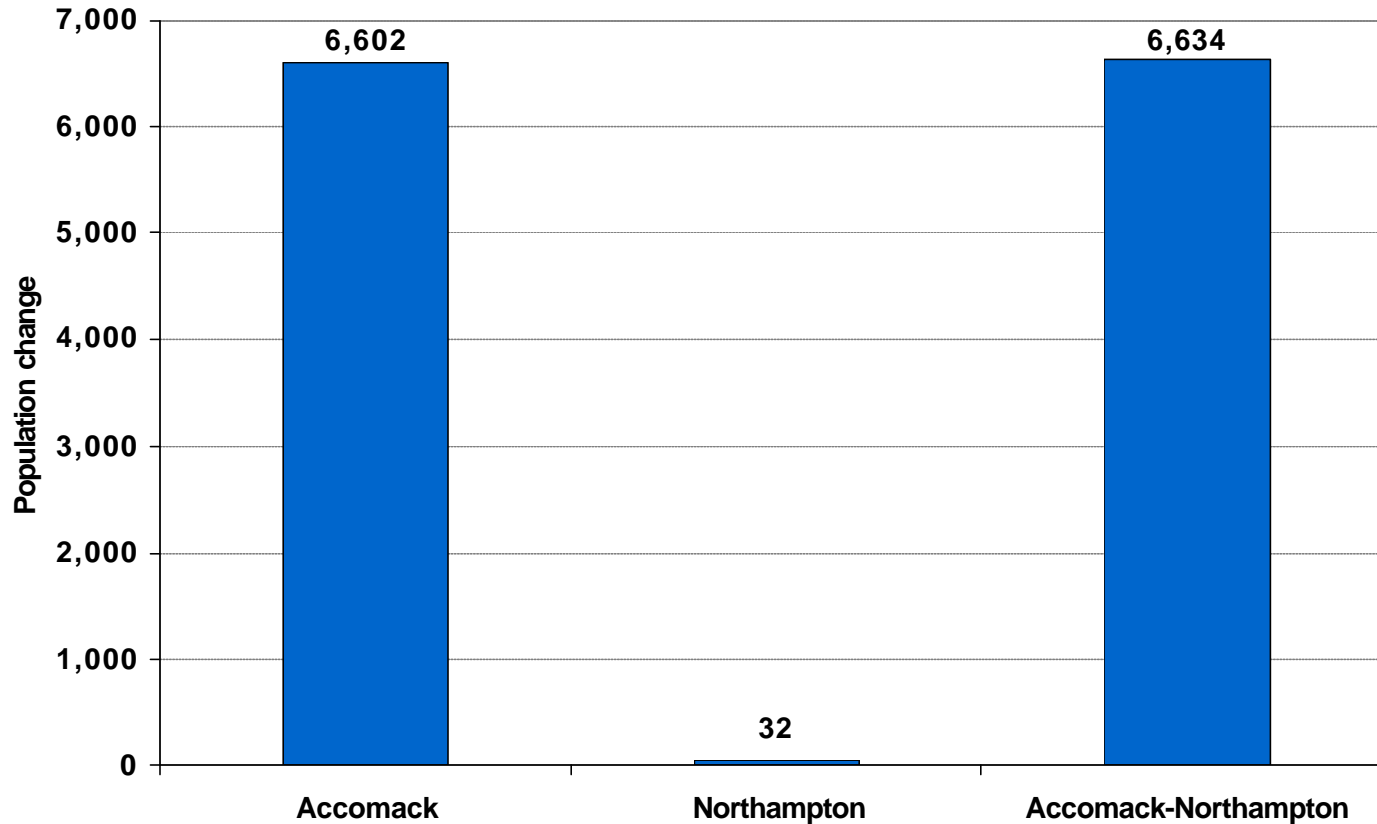
➤ Overall per capita income in the Middle Peninsula in 1998 was about 79 percent of the state average

**ACCOMACK-NORTHAMPTON  
PLANNING DISTRICT COMMISSION**

# POPULATION

- Population of 51,398 in the 2000 Census
- Overall population growth slightly faster than the state as a whole in the 1990s
- The median age of the population is about five years older than that for the Commonwealth

# POPULATION



- Almost all the population growth in Accomack County, which grew faster than the state as a whole
- Population growth in the 1990s of 6,634, all by net in-migration

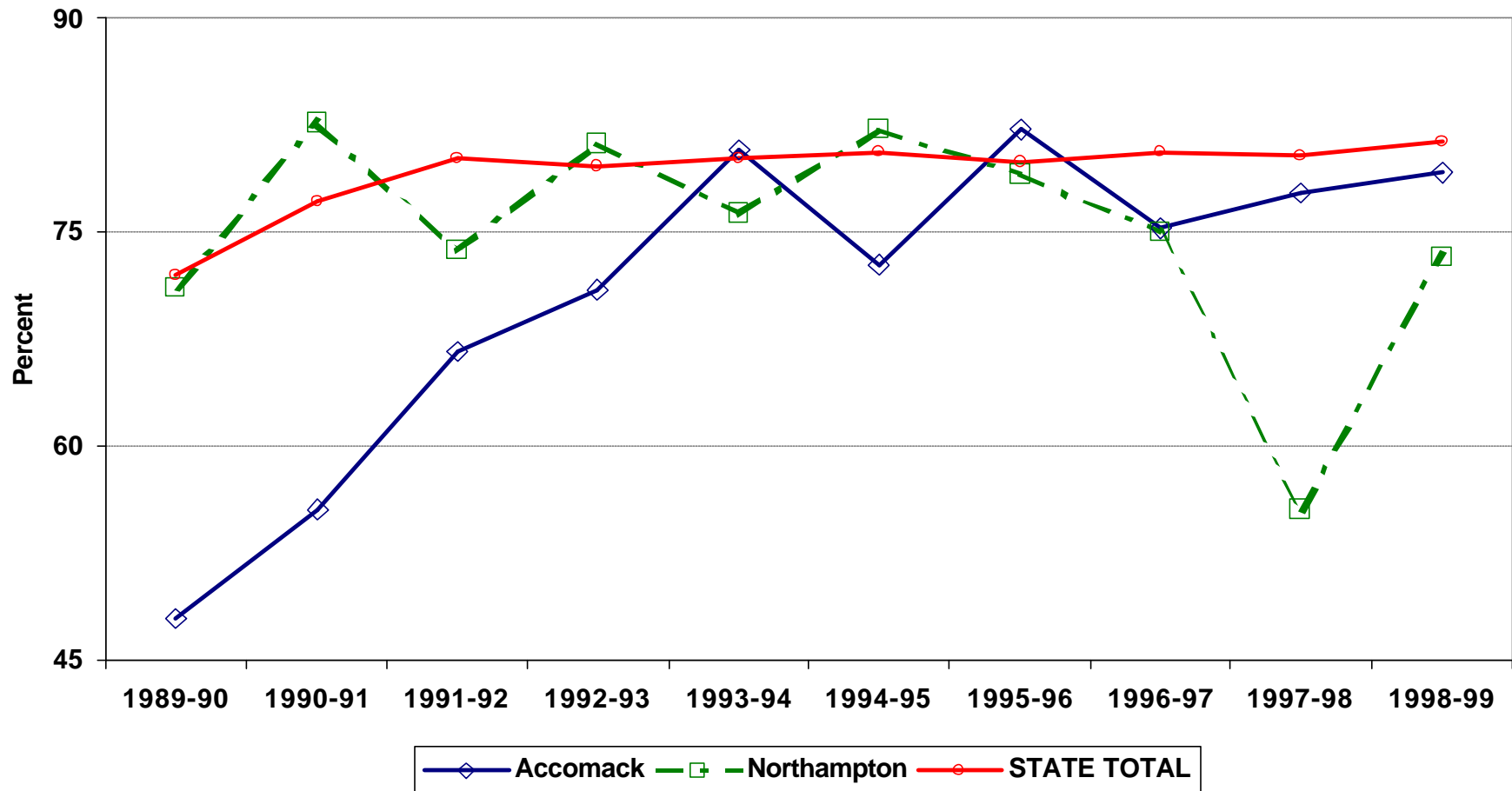
# EMPLOYMENT

- Eastern Shore: slowest employment growth of any planning district in Virginia in the 1990s
- Employment highly diversified across private services, manufacturing, and government which together account for about 60 percent of all jobs
- Close to 12 percent of the jobs in the region in agriculture, forestry, and fisheries
- Unemployment rates historically high relative to the state and nation

# COMMUTING

- Better than 90 percent of the residents work in the region itself
- Virtually no commuting to Hampton Roads and only a small amount northward into Maryland

# EDUCATION

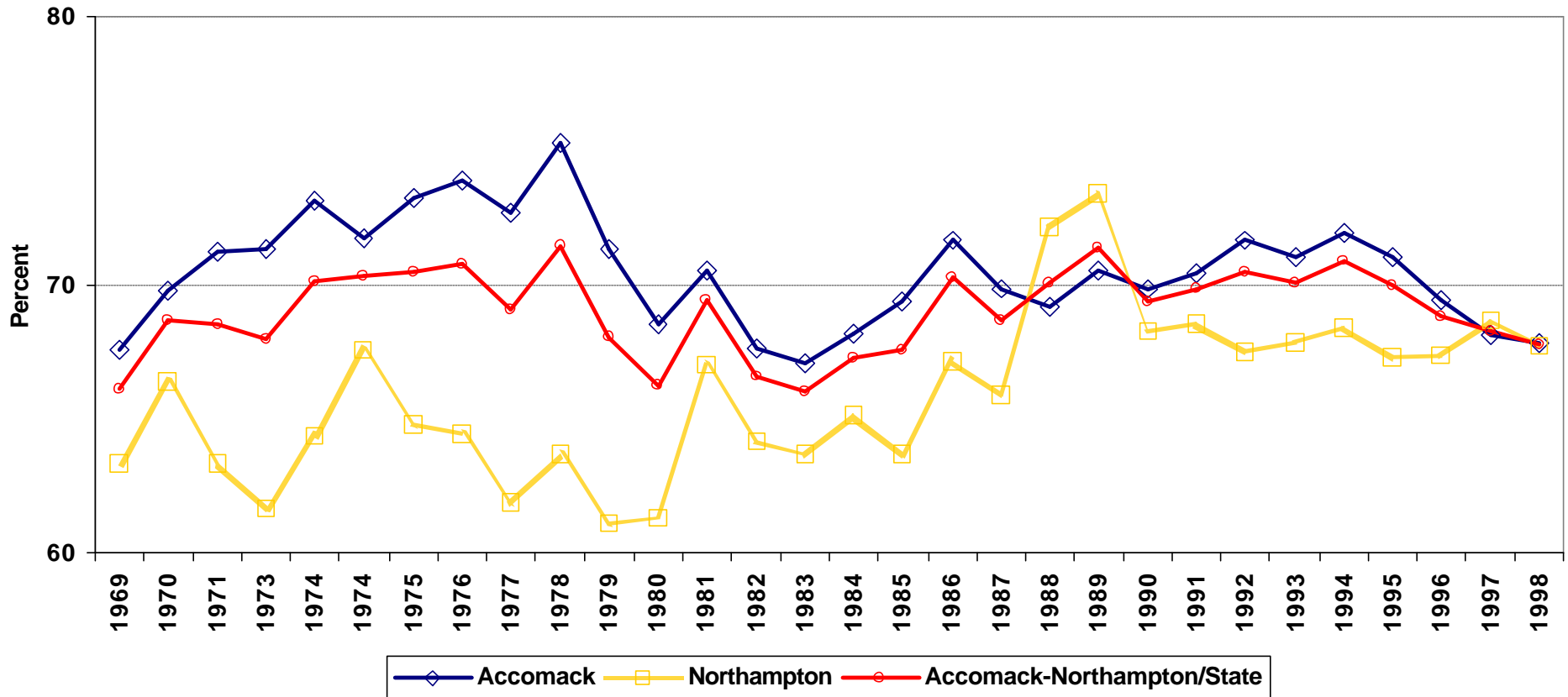


- In 1990, more than 60 percent of the population 25 years old or older not finished high school
- Considerable improvement in the percentage of high school graduates moving on to post-secondary education

# INCOME

- Very little difference in per capita income in the two counties
- The only Planning District with lower median household income is LENOWISCO

# INCOME



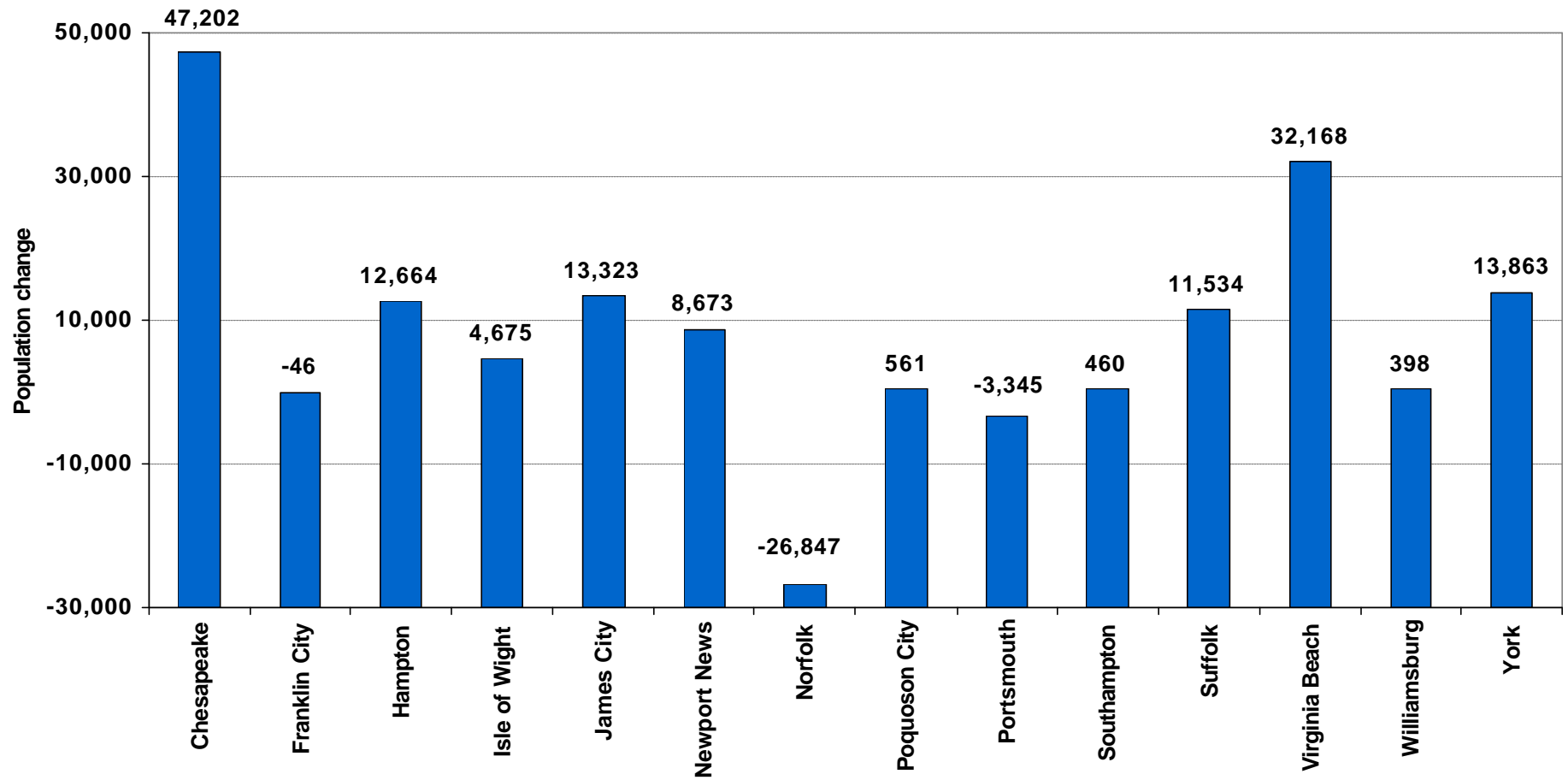
- Overall relative income on the Eastern Shore very stable for the last 30 years
- In 1969, per capita income was 66 percent of the state average, and in 1998, it was 67.7 percent

**HAMPTON ROADS  
PLANNING DISTRICT COMMISSION**

# POPULATION

- Overall population in 2000 Census of 1,533,192
- Population growth in the 1990s of 115,283, about 8 percent, well below the average statewide
- Lowest median age of any Planning District in Virginia
- Major factor was net out migration

# POPULATION



- Five of the 14 jurisdictions had net out-migration; three lost population overall
- Very substantial growth in Chesapeake and Suffolk cities and James City and York counties

# EMPLOYMENT

- About one out of every four jobs in Virginia in the Hampton Roads area
- Military downsizing: depressing effect on job growth in the region, particularly in Norfolk and Portsmouth
- Very significant job growth in Chesapeake
- Federal government accounts for close to one out of every four jobs in the region
- Farms account for less than 1 percent of the jobs
- Tourism significant in Williamsburg and Virginia Beach
- Unemployment generally below the national average but slightly above the state average

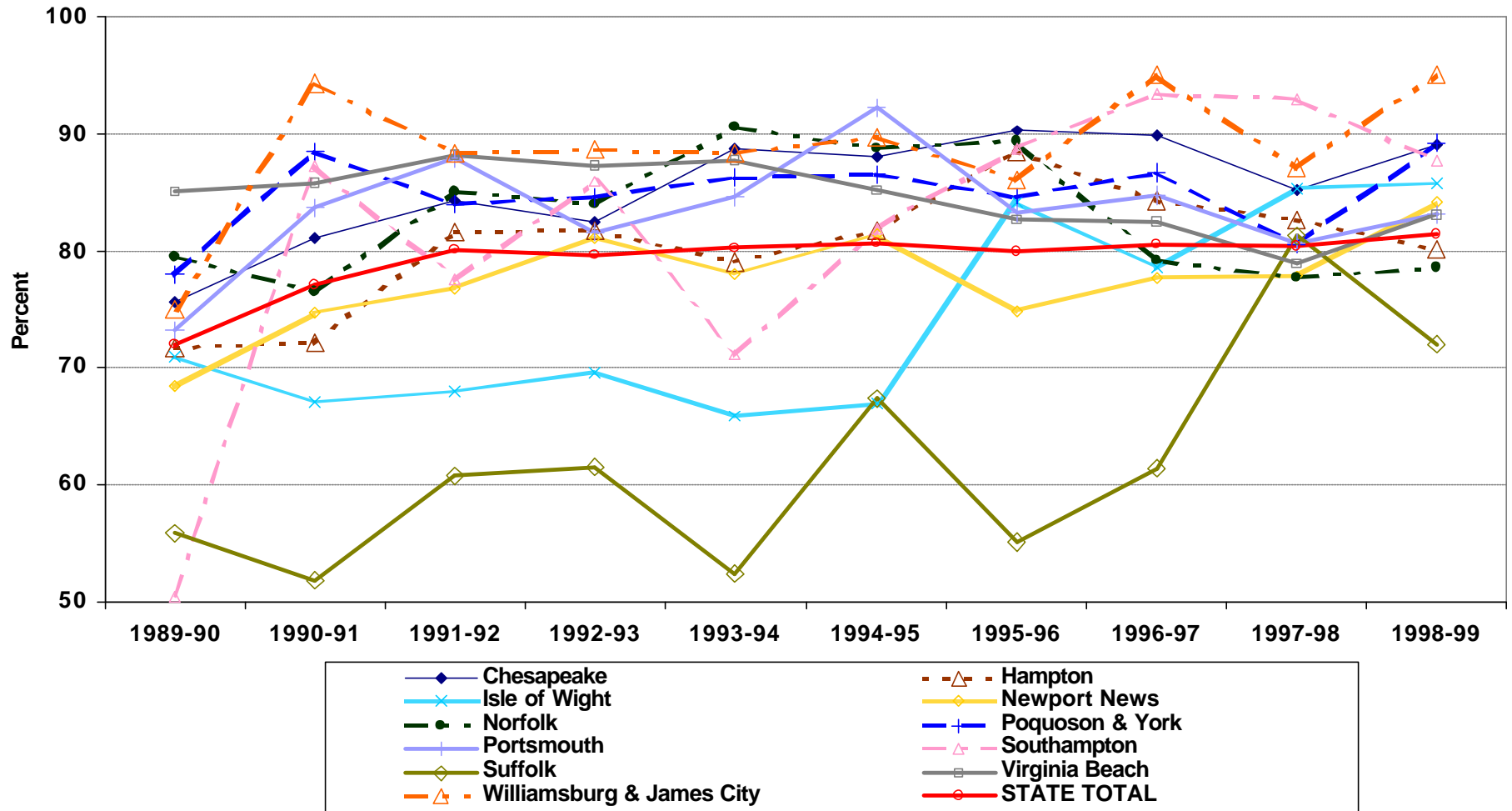
# COMMUTING

- Considerable commuting within the region, but very little to jobs outside the region
- Major commuter magnates: Norfolk and Newport News

# EDUCATION

- Ranks second only to Northern Virginia in percentage of the population 25 years old and older with high school diplomas
- Wide variation across region in educational attainment with Southampton County looking more like the Eastern Shore in number of high school graduates

# EDUCATION

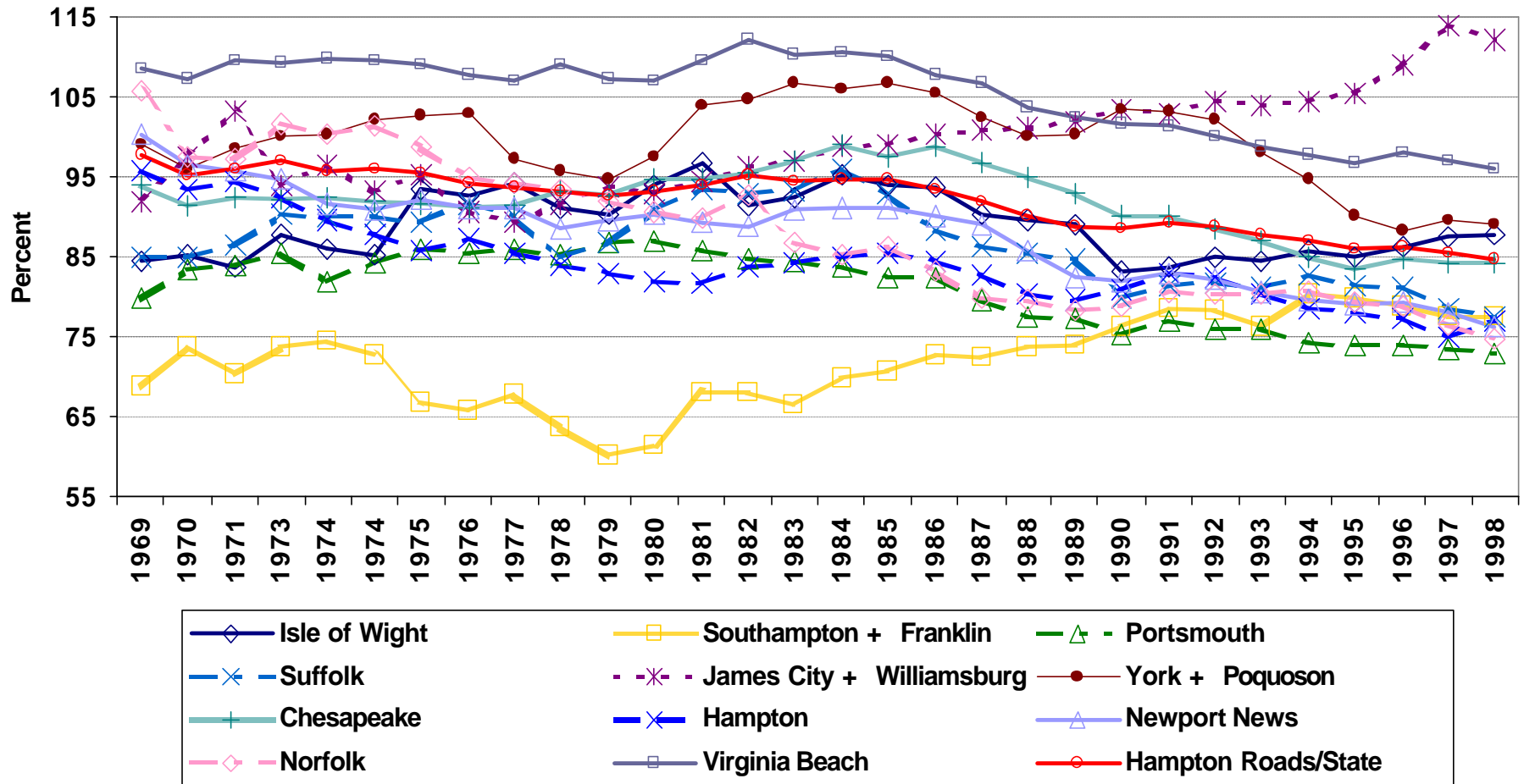


- Most jurisdictions above state average in percent of high school graduates going on to post secondary education
- Virginia Beach exception, but catching up

# INCOME

- Big losers: residents of cities of Norfolk, Newport News, and Virginia Beach--per capita incomes fell from greater than 100 percent of the state average in 1969 to about 75 percent of the state average in 1998
- The big winners: James City County and the City of Williamsburg
- Some movement in relative positions for other parts of the region but small compared to these cases

# INCOME



- The Hampton Roads area less well off in 1998 compared to the rest of Virginia than in 1969
- Relative declines in economic well-being not solely in rural areas