

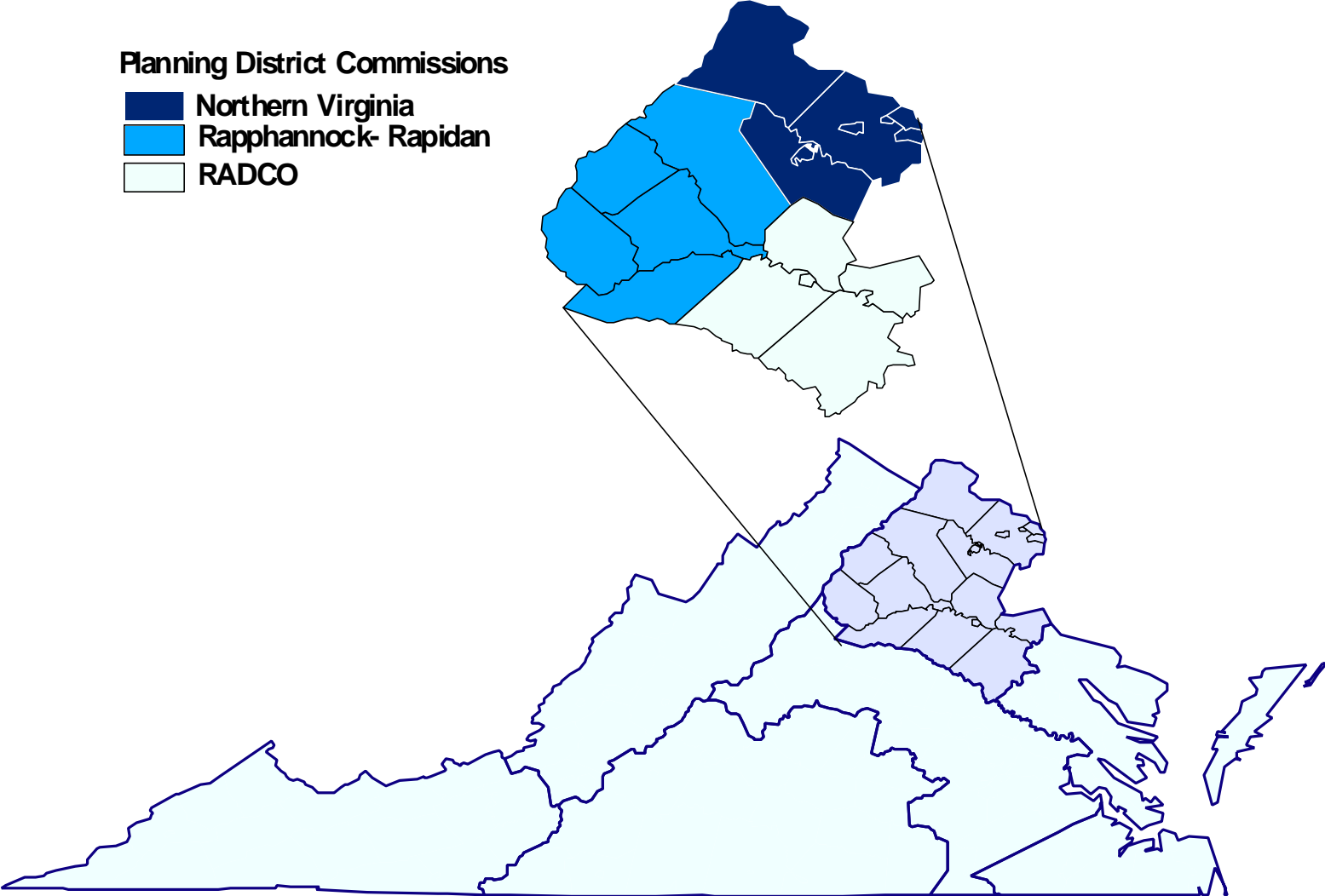
# Northern Virginia Planning District

## Rappahannock-Rapidan Planning District

### RADCO Planning District

Planning District Commissions

- Northern Virginia
- Rappahannock- Rapidan
- RADCO

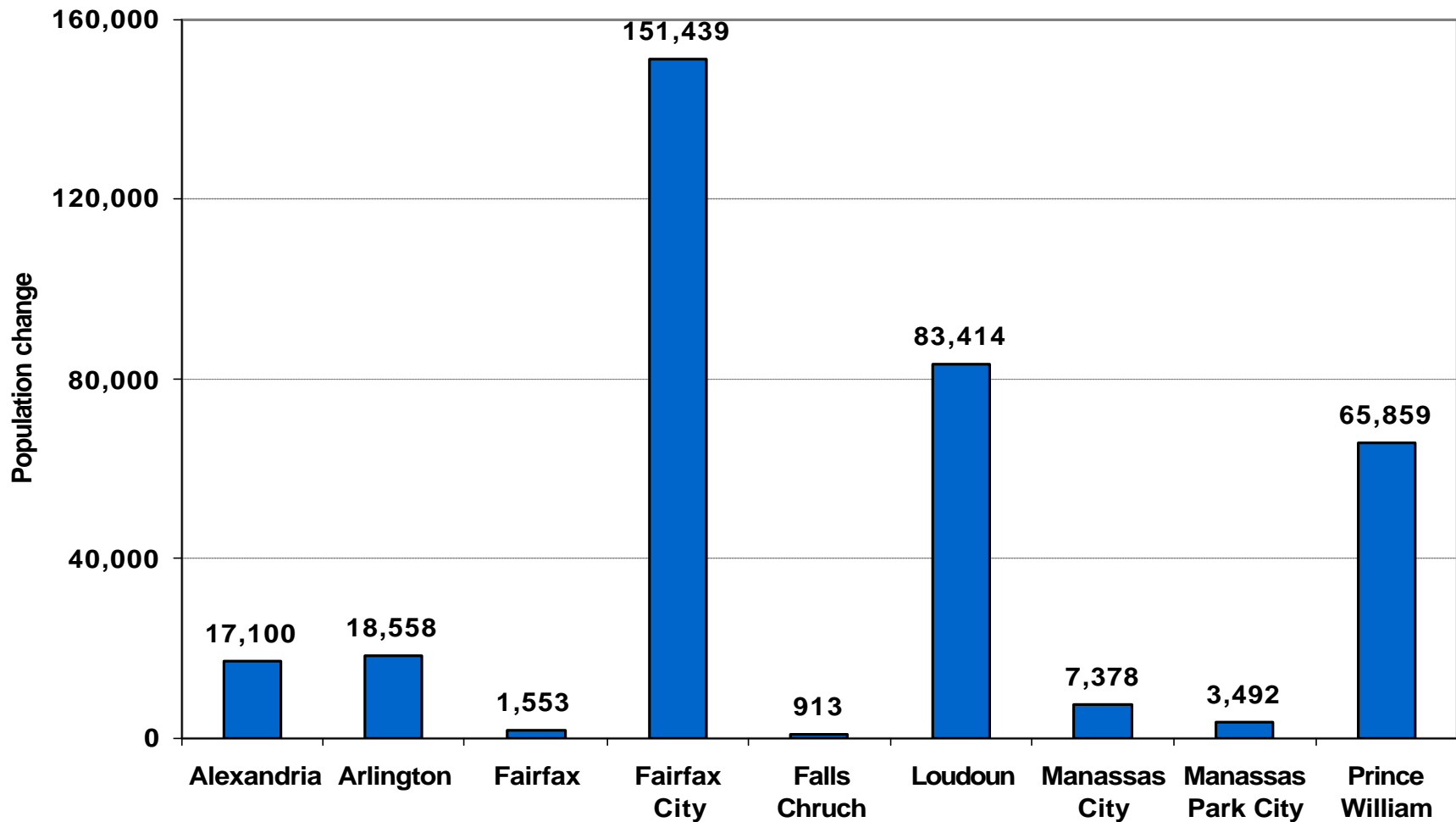


**Northern Virginia  
Planning District Commission**

# Population

- **Total 2000 population: 1,789,000**
- **Only outer edges of District remain rural**
- **Population growth rate in many areas nearest Washington, DC slower than overall state rate of growth**

# Population Change: 1969-2000



- Highest growth rates in periphery of PDC
- Population in Loudoun almost doubled

# Employment

- **More than 1/4 of all jobs in state are in Northern Virginia PDC**
- **Manufacturing accounts for almost none of jobs**
- **Job growth very strong in information technology**
- **Unemployment rates low by state and national standards**

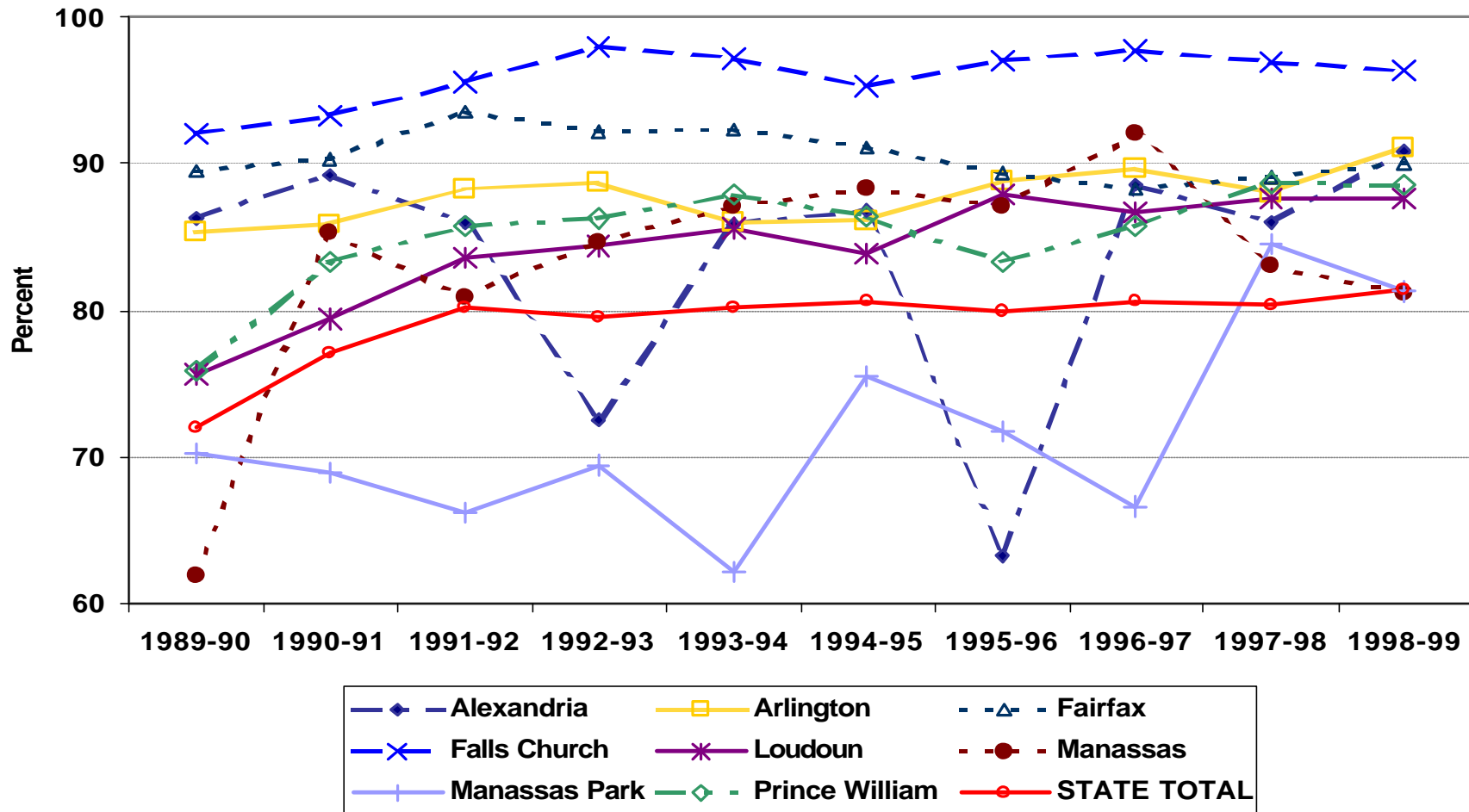
# Commuting

- **No county or city in Northern Virginia PDC retains a majority of its resident workers**
- **Chief commuter magnate in PDC: Fairfax County**
- **Washington, DC major commuter magnate outside PDC, but no longer attracts majority of commuters**

# Education

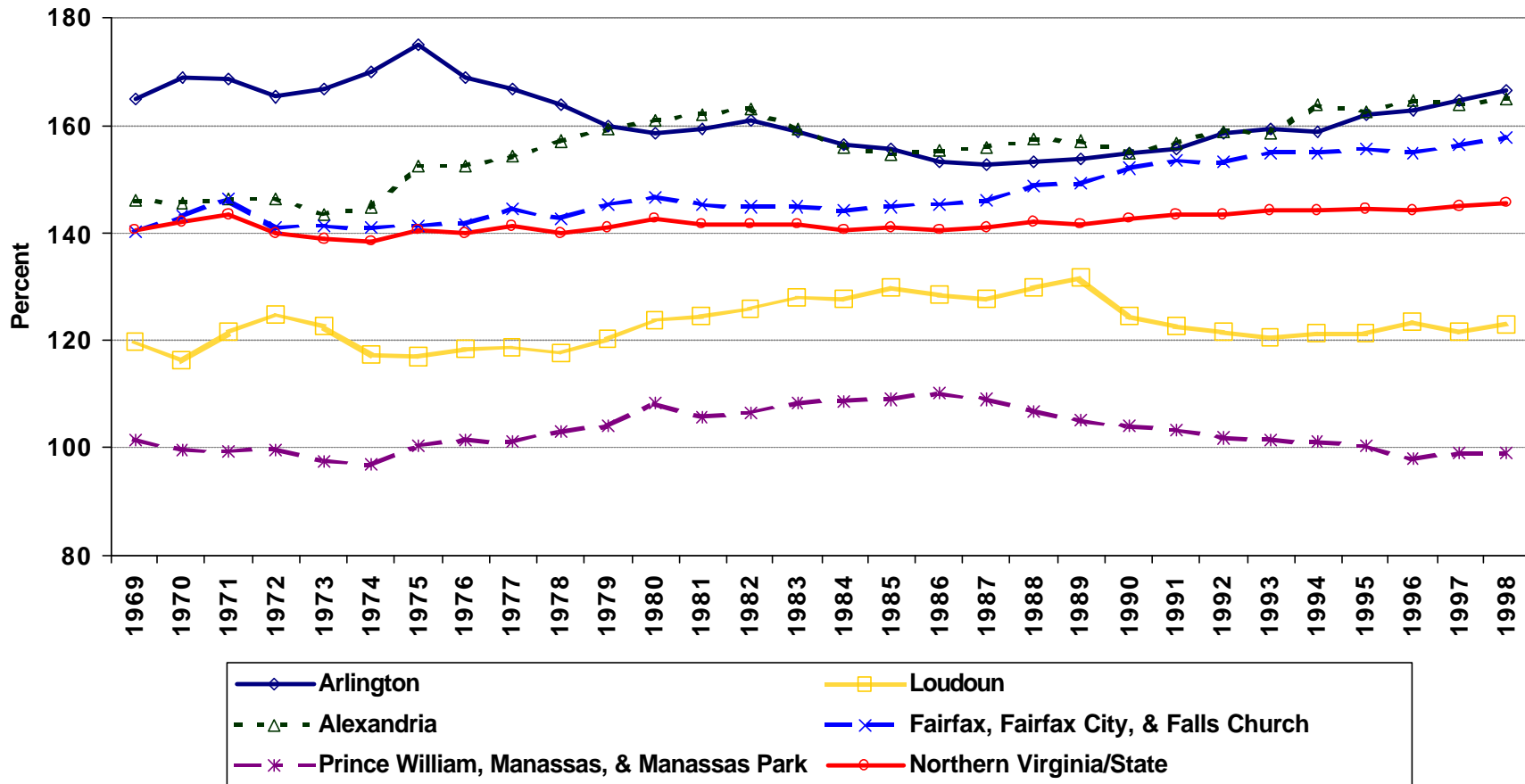
- **More than 90% of population 25 and older have high school diplomas**
- **Almost half have bachelor's degrees**
- **Historically, high percentage of high school graduates continue to post secondary education**

# Education



➤ **Percentage of students continuing education increasing**

# Income



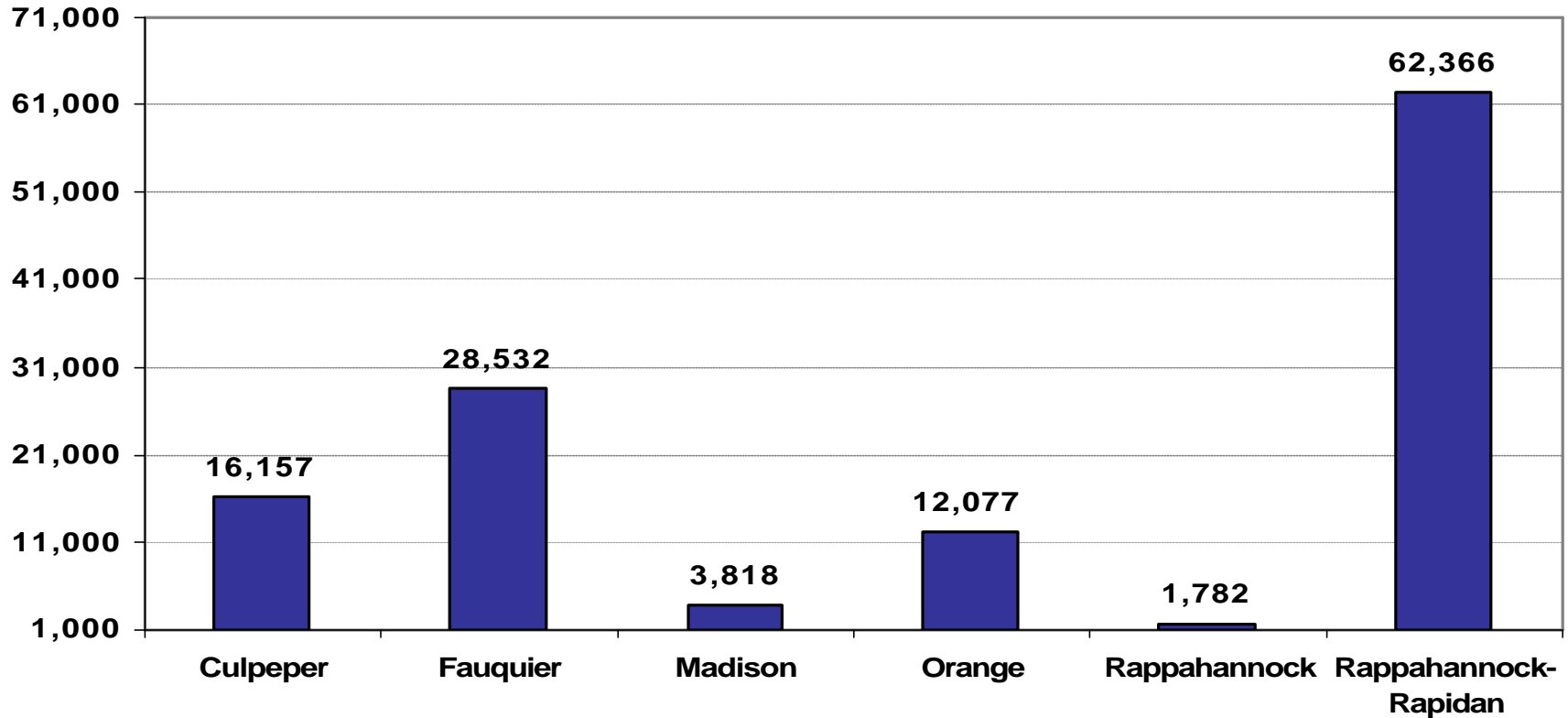
- **Accounts for more than 36% of all personal income earned by Virginians**
- **All jurisdictions in PDC have per capita incomes above state average**

# **Rappahannock – Rapidan Planning District Commission**

# Population

- **Total population in 2000: 135,000**
- **80% of population in PDC in Culpeper, Orange, and Fauquier counties**

# Population Change: 1969-2000



- **Percentage growth in Culpeper and Orange faster than state average**
- **Madison and Rappahannock grew much slower than state average**

# Employment

- **Rate of job growth in PDC about equal to state**
- **Fastest rate of job growth: Madison County**
- **Slowest rate of job growth: Culpeper County**
- **Over 50% of jobs in retail, private services, and government**
- **Unemployment generally below state average**

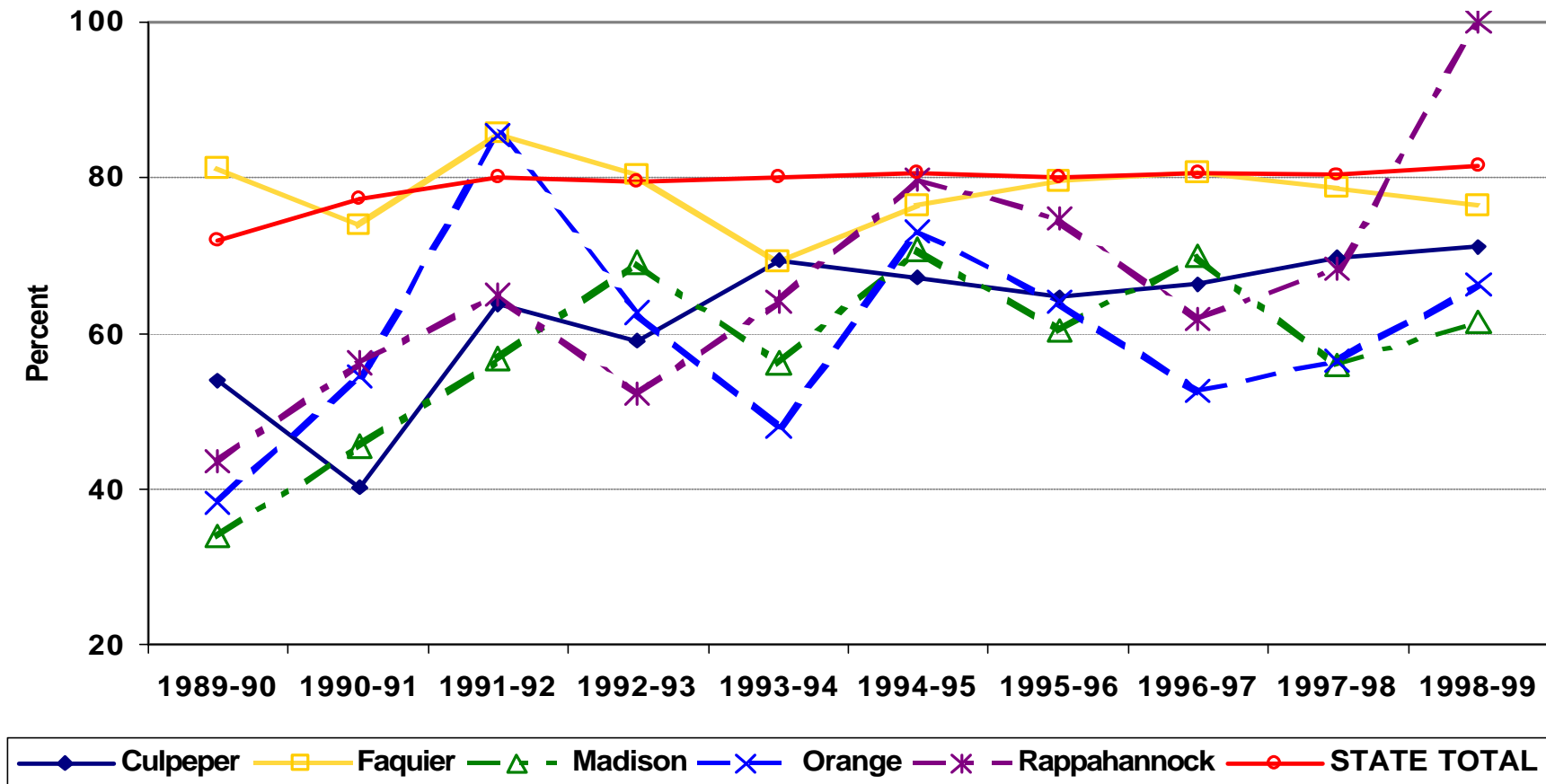
# Commuting

- **Most residents work in county where live—except Madison County**
- **Charlottesville and Northern Virginia counties attract significant number of commuters from PDC**
- **In late 1990s, patterns changed—many from Culpeper working in Dulles area**

# Education

- **Educational attainment at all levels below state average**
- **Only four other PDCs had higher percentage of adult population with high school diplomas in 1990**

# Education

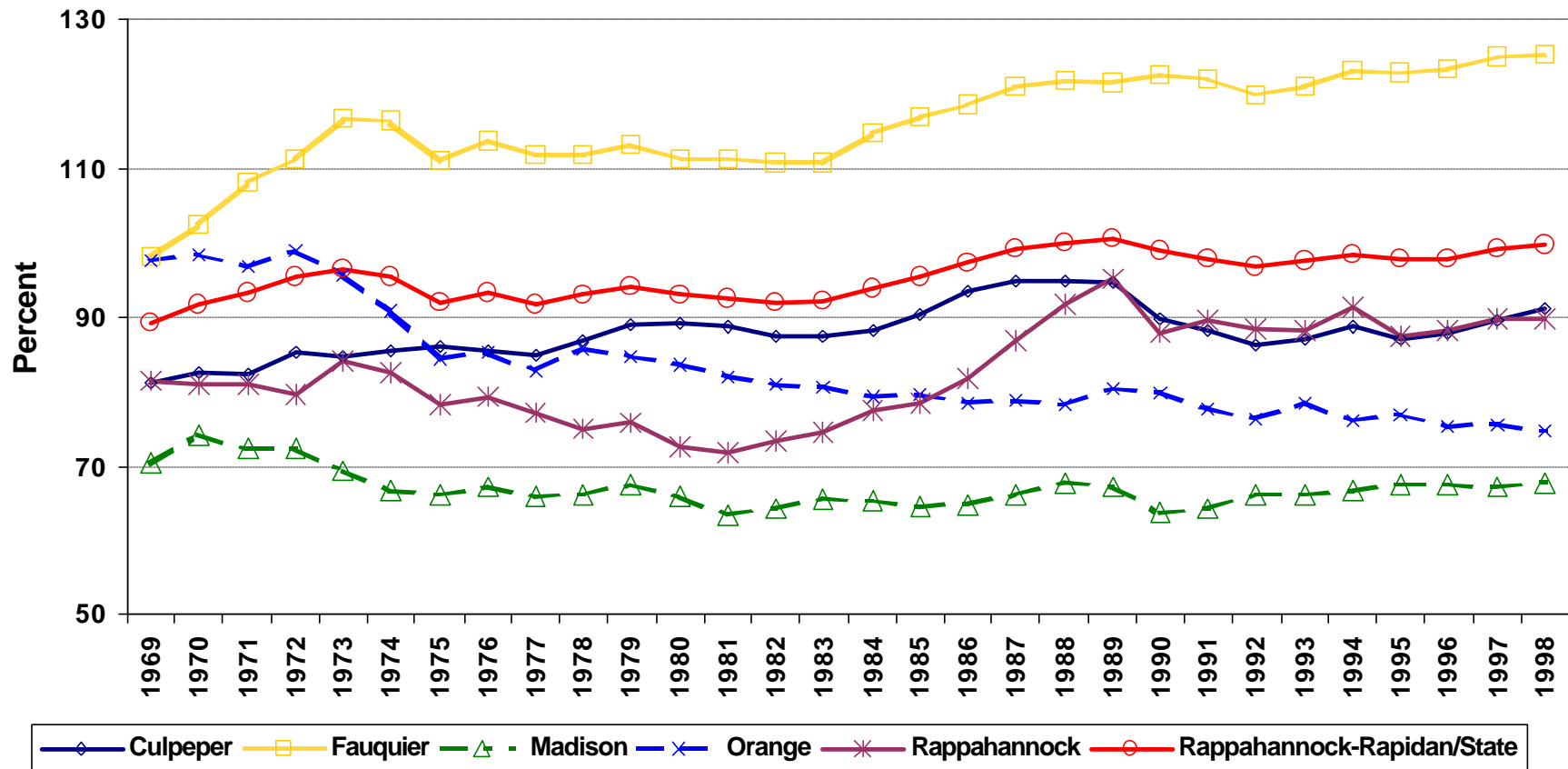


➤ **Percentage of high school graduates continuing education below state average except in Fauquier and Rappahannock counties**

# **Income**

- **Per capita income generally below state average**
- **Total personal income growing rapidly**

# Income



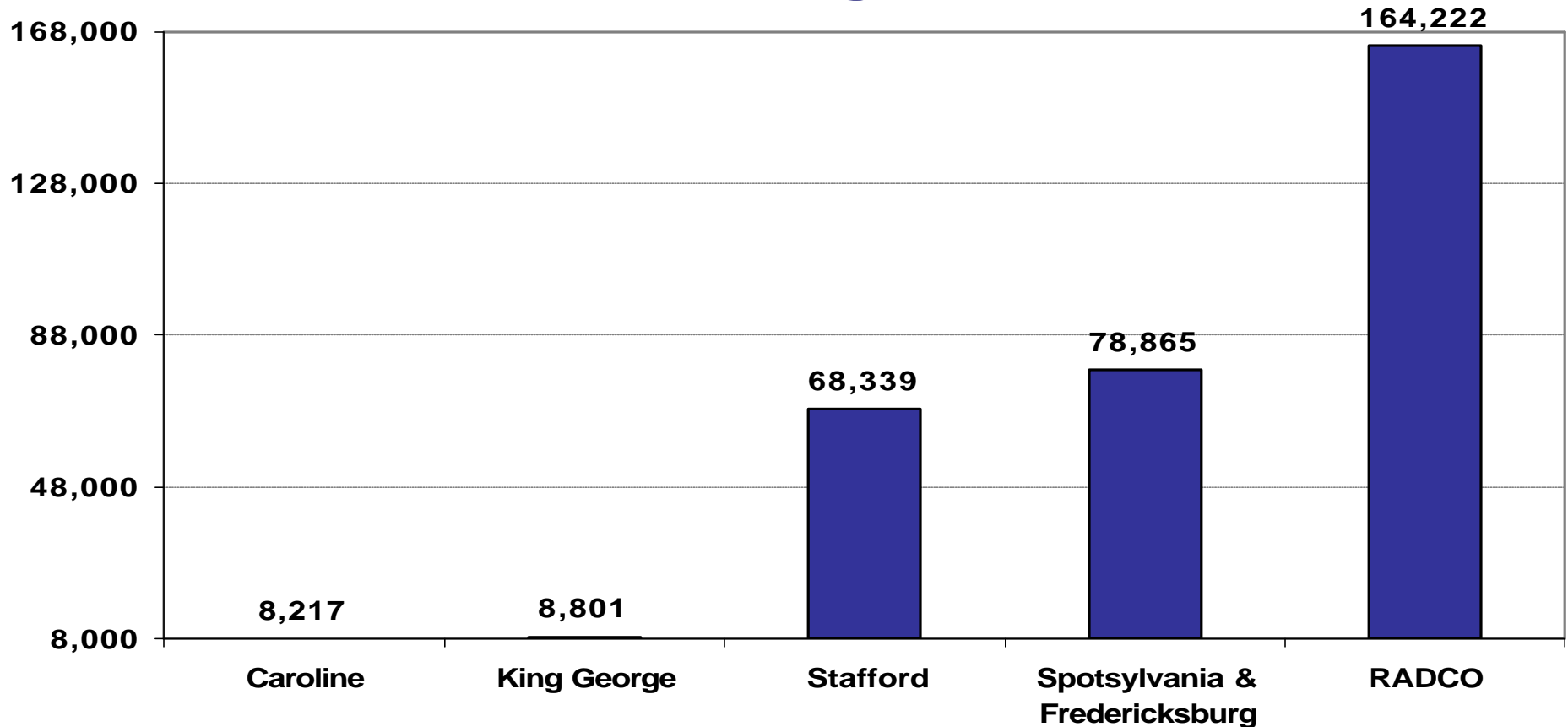
- Only Fauquier County has greater per capita income than state average
- Madison County lowest
- Orange County per capita income declining

**RADCO**  
**Planning District Commission**

# Population

- **Total population in 2000: 241,000**
- **Little population growth in Fredericksburg City**

# Population Change: 1969-2000

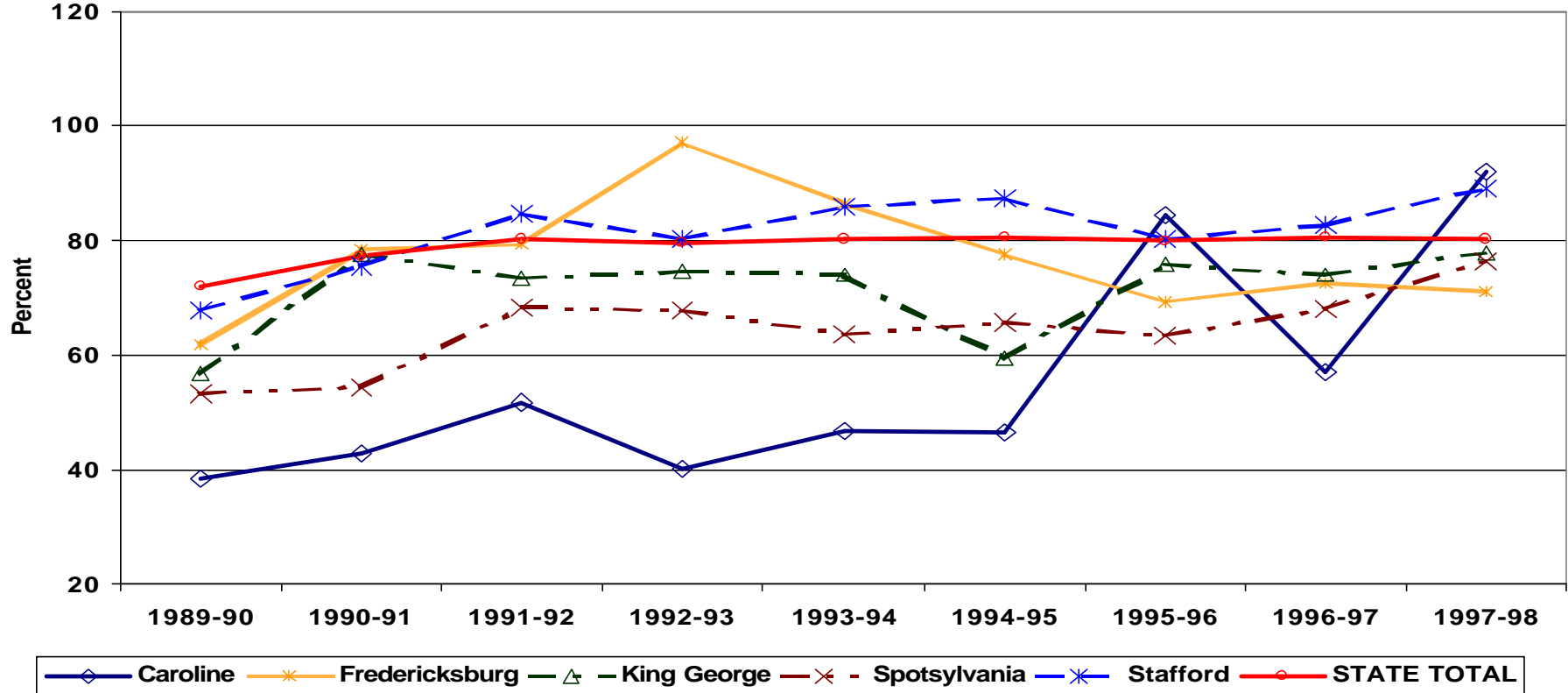


- **Caroline County percentage growth about same as state**
- **Rapid growth in King George, Spotsylvania, and Stafford counties**

# Commuting

- **More than 50% of residents commute outside county to work**
- **Fredericksburg main commuter magnate within PDC**
- **Significant commuting to Richmond and Washington, DC**

# Education

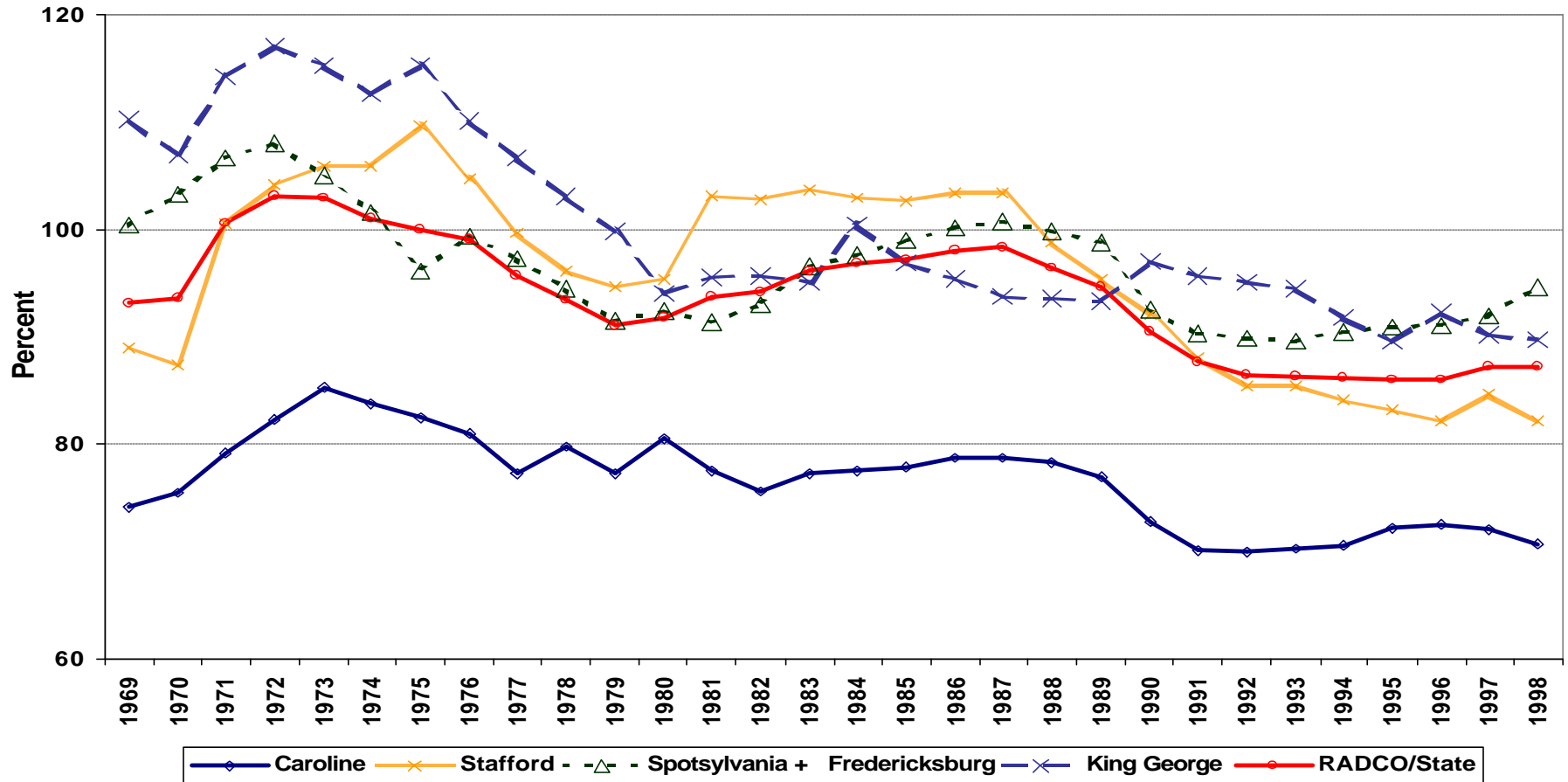


- Educational attainment in all but Caroline County about same as state
- Much variation across localities in percent going to post secondary education, but close to state level

# Income

- **Fastest growth rate in total personal income of any PDC in state**
- **Irony: per capita incomes in RADCO generally declined relative to state average**
- **Why? Fast population growth**

# Income



- Highest per capita income in Stafford County and Fredericksburg
- Lowest in Caroline County